

## CHUUK PUBLIC UTILITY CORPORATION



### MONTHLY REPORT:

FY2025 – December 2024



Issued: 28 January 2024

**Table of Contents**

EXECUTIVE SUMMARY..... 3

1 FINANCIAL PERFORMANCE GRAPHS..... 4

2 POWER GENERATION & DISTRIBUTION PERFORMANCE GRAPHS ..... 6

3 WATER PERFORMANCE GRAPHS..... 8

Financial Table 1 P & L Statement – FY2025: January 2024 – December 2024 ..... 9

Financial Table 2 Cash Flow and A/R Report – FY2025: January 2024 – December 2024 ..... 10

Financial Table 3 Power Sales Report – FY2025: January 2024 – December 2024 ..... 11

Financial Table 4 Water Sales Report – FY2025: January 2024 – December 2024 ..... 12

Financial Table 5 Key Performance Indicators – FY2025: January 2024 – December 2024 ..... 13

Financial Table 6 CPUC Performance Against Budget FY 2025..... 14

Power Table 1 Power Operation Indicators – FY2025: January 2024 – December 2025 ..... 15

Power Table 2 Power Generation Statistics – FY2025: January 2024 – December 2024 ..... 16

Power Table 3 Fuel & Lube Oil Statistics - FY2025: January 2024 – December 2024 ..... 17

Power Table 4 Distribution Feeder Statistics - FY2025: January 2024 – December 2024 ..... 18

Power Table 5 Customer Energy Use By Category and By Feeder – December 2024..... 18

Power Table 6 Power Distribution Statistics – FY2025: January 2024 – December 2024 ..... 19

Power Table 7 Power Outage Statistics – FY2025: January 2024 – December 2024 ..... 19

Water Table 1 Water Production & Sales Data – FY2025: January 2024 – December 2024 ..... 20

Water Table 2 Water/Sewer Connection Data – FY2025: January 2024 – December 2024..... 21

Water Table 3 Zonal Water Use Statistics – December 2024 & FY2025..... 22

Work Order Summary – End December 2024..... 23

Administration Table 1 H&S Statistics – December 2024 ..... 24

Administration Table 2 Attendance Summary – December 2024 & FY 2025 ..... 24

CAPEX Table 1 Capex Summary Sheet – December 2024 ..... 25

Graph Showing Feeder Loads in kW – December 2024 ..... 26

Graph Showing Generation Output in kW – December 2024 ..... 27

**EXECUTIVE SUMMARY**

**SUMMARY OF KEY STATISTICS**

	Dec 24	FY2025	US\$/kWh Sold		US\$/kWh Generated	
	US\$	US\$	Dec 24	FY2025	Dec-24	FY2025
Revenue	802,579	2,402,249	0.519	0.524	0.494	0.496
Variable Costs	394,112	1,165,552	0.255	0.254	0.242	0.241
Fixed Costs	278,862	764,836	0.180	0.167	0.172	0.158
Total Expenses	672,975	1,930,389	0.435	0.421	0.414	0.399
Operating result	129,604	471,860	0.084	0.103	0.080	0.097
Power Generation - Weno	1,625,993	4,841,935				
<i>Diesel</i>	1,562,245	4,656,041				
<i>Solar</i>	63,748	185,894				
<i>Solar PV as % of Total Generation</i>	3.9%	3.8%				
<i>Avoided Cost of Fuel - US\$</i>	13,912	40,686				
<i>Tons of CO2 Avoided</i>	41.1	121.5				
Power Purchase (kWh) - Tonoas	38,800	112,800				
Government Sales	238,630	762,692	<b>Feeder</b>	<b>Connections</b>	<b>Dec-24</b>	<b>FY2025</b>
Commercial Sales	680,945	1,994,454	F1	488	326,677	1,046,527
Residential Sales	520,873	1,517,996	F2	540	126,301	379,933
Intercompany Sales	72,546	208,850	F3	482	430,273	1,298,030
Sales Accrual	0	0	F4	446	378,397	1,096,073
Tonoas Sales	33,493	101,098	F5	536	178,822	570,191
<b>Total Sales - kWh</b>	<b>1,546,486</b>	<b>4,585,091</b>	Tonoas	230	33,493	101,098
Power Loss - Weno	6.9%	7.4%	<b>Total</b>	<b>2,721</b>	<b>1,473,963</b>	<b>4,491,852</b>
Power Loss - Tonoas	13.7%	10.4%	* excludes streetlights & CPUC internal Sales			
<b>Power Loss - Whole company</b>	<b>7.1%</b>	<b>7.46%</b>				
Operating ratio	0.00	0.81				
Water Produced - Gallons	18,915,788	53,629,352				
Water Sold - Gallons	8,273,556	31,371,943				
Non Revenue Water	56.3%	41.5%				

Daily generated output in December was 52,451 kWh/day a decrease of 1.0% on November. Average daily sales were 48,806kWh/day – 1.0% lower than November. Total power loss in Weno was 6.9% in December (7.4% FY2025). Tonoas power loss in December was 13.7% (10.4% FY2025). Whole company losses for December was 7.1% (7.5% FY2025).

The split of power users for Weno sales in December was as follows:

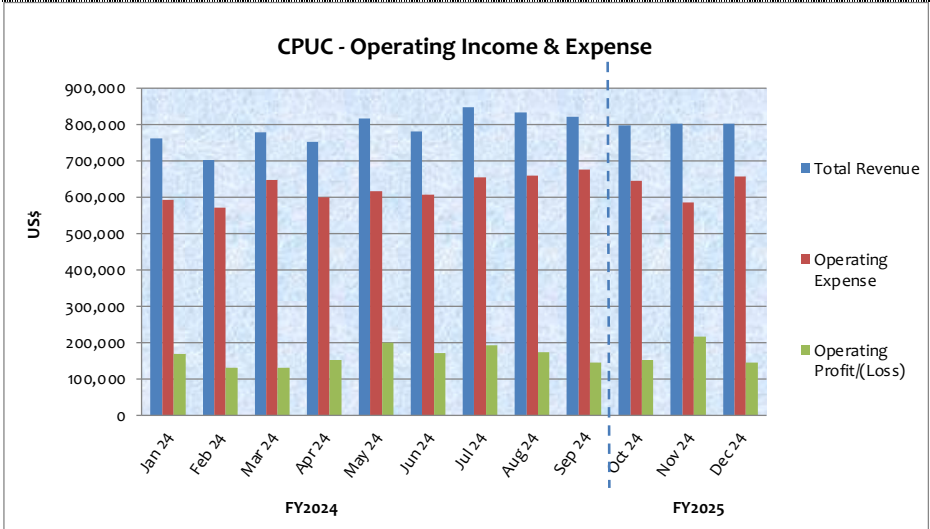
Government –17.6%; Commercial – 47.9%; Residential – 32.0%; Intercompany – 2.5%; Accrual - 0.0%;

Solar PV generation in December 2024 was 63,748 kWh or 3.9% of total generation. The avoided cost of fuel was US\$13,912 and the amount of Carbon Dioxide avoided was 41.1 tons. The RE generation in December remains less than full capacity due to the removal of the 65 kWp airport system for roof renewal – the sooner this can be replaced the better for CPUC.

The NRW in December was 56.3% (41.5% FY2025) the high result for the month was due to accrual assumptions in November. When taken together the avg for November and December is around the average for the year.

The operating result for December 2024 is US\$129,604 before interest and depreciation (US\$471,860 FY2025). This is better than budget by US\$54,754. The gross operating ratio for December was 0.85 (0.81 FY2025 YTD).

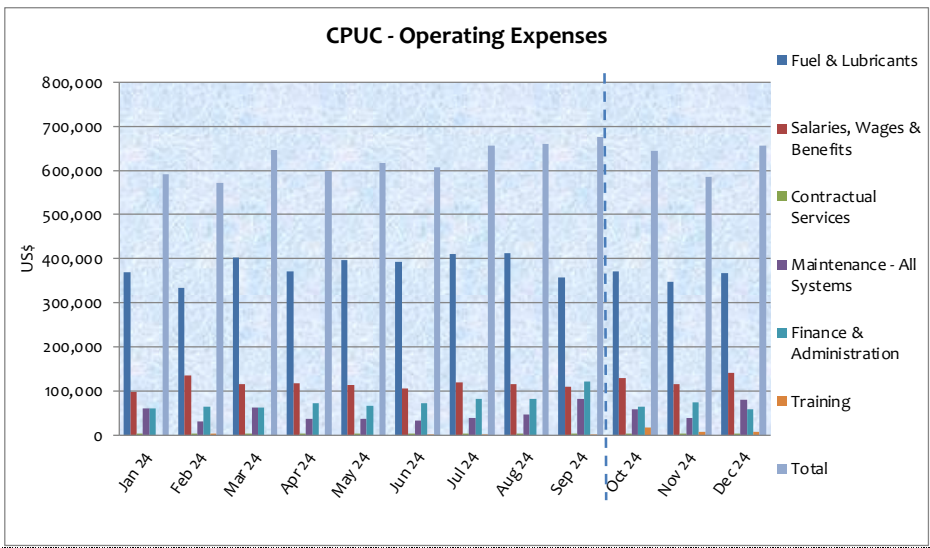
# 1 FINANCIAL PERFORMANCE GRAPHS



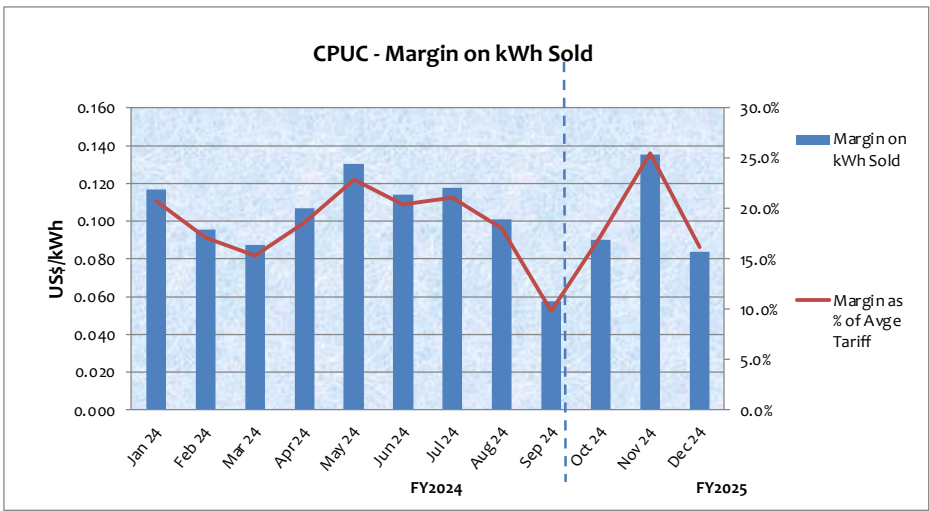
**1.1 Key Points:**

Operating income for December 2024  
 US\$129,604  
 Operating ratio: 0.85

FY2025 - 0.81



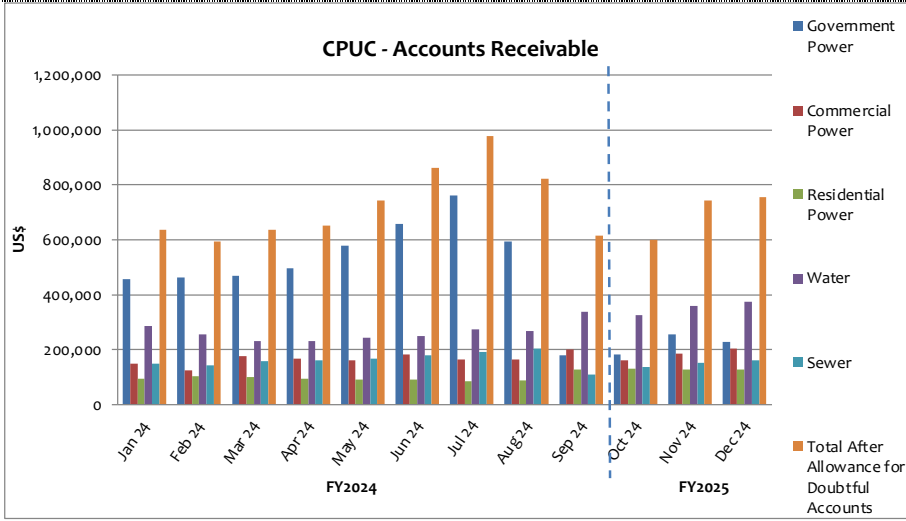
**1.2 Key Points:**



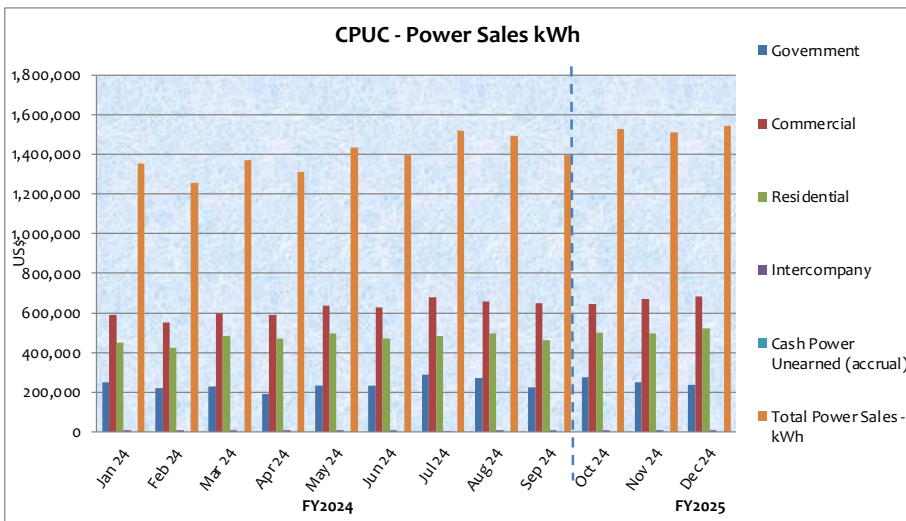
**1.3 Key Points:**

Margin on kWh sold  
 US\$0.084/kWh  
 (US\$0.103/kWh YTD)

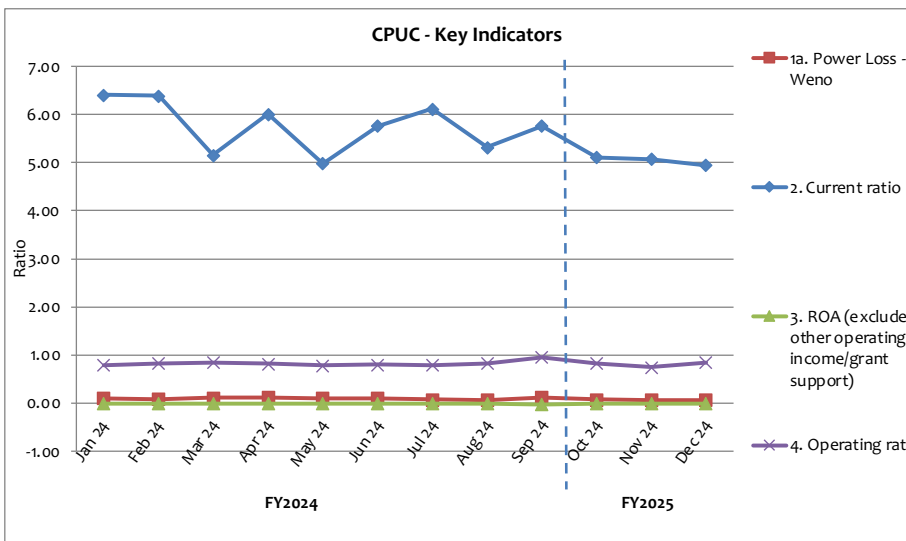
Dec 24 – 16.1%  
 YTD 19.6%



#### 1.4 Key Points:

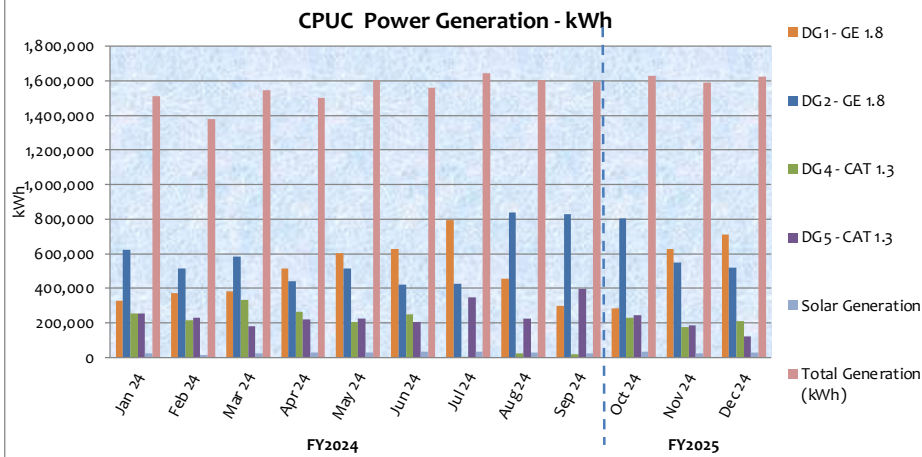


#### 1.5 Key Points:

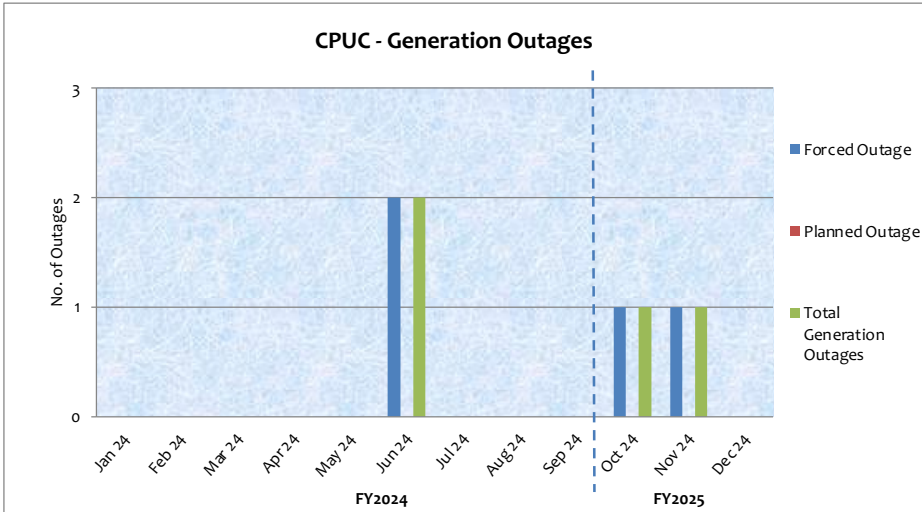


#### 1.6 Key Points:

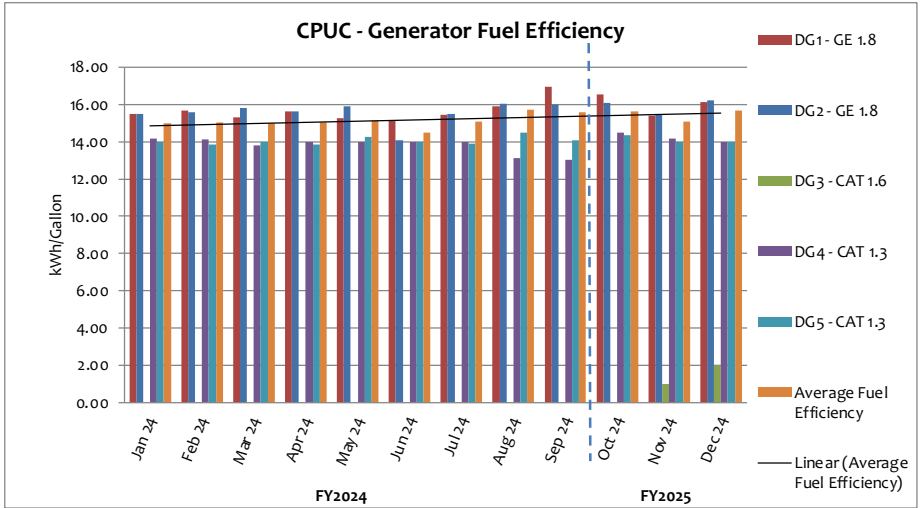
## 2 POWER GENERATION & DISTRIBUTION PERFORMANCE GRAPHS



### 2.1 Key Points:



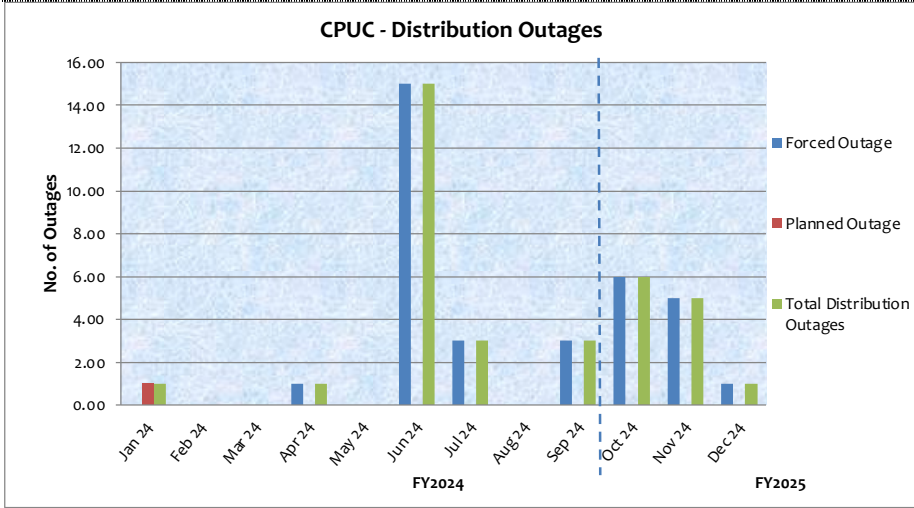
### 2.2 Key Points:



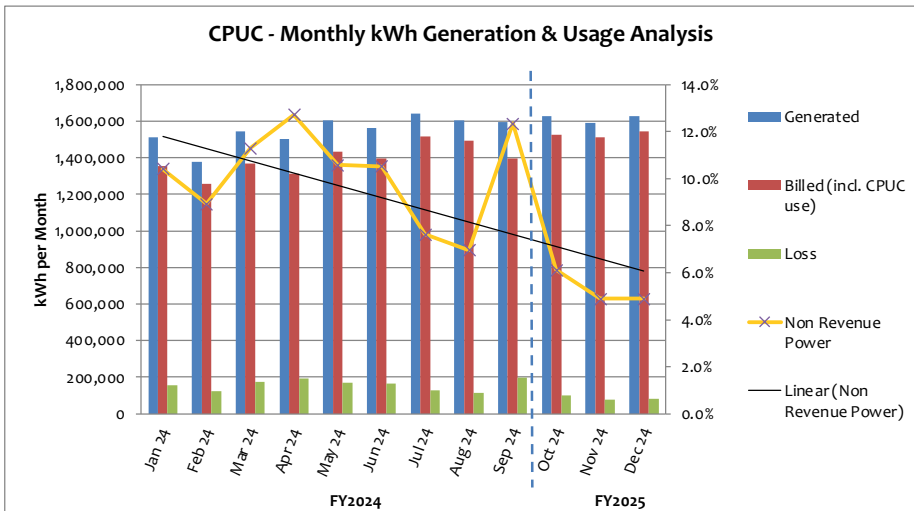
### 2.3 Key Points:

Avge fuel efficiency  
Dec 24– 15.66  
kWh/gall

YTD – 15.45kWh/gall



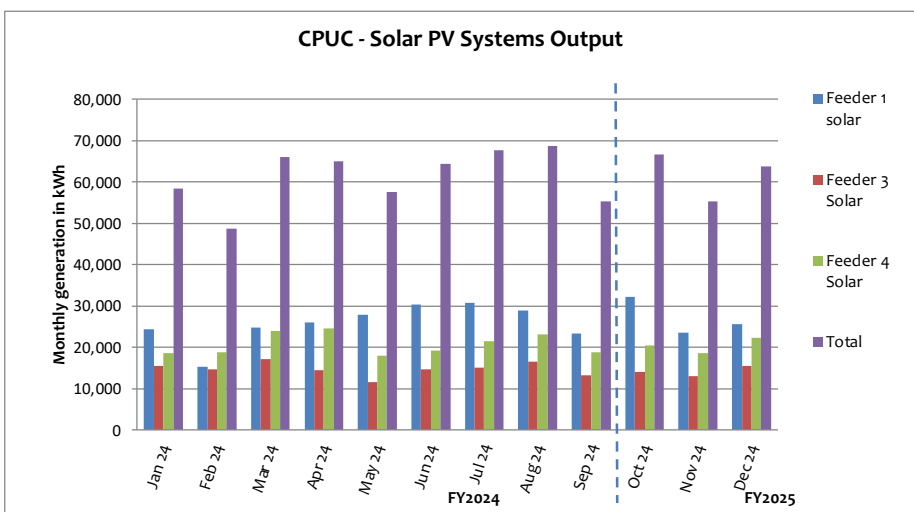
#### 2.4 Key Points



#### 2.5 Key Points:

Power loss for December:

- Weno – 6.9%
- Tonoas – 13.7%
- Whole company – 7.1% (7.5% FY2025)

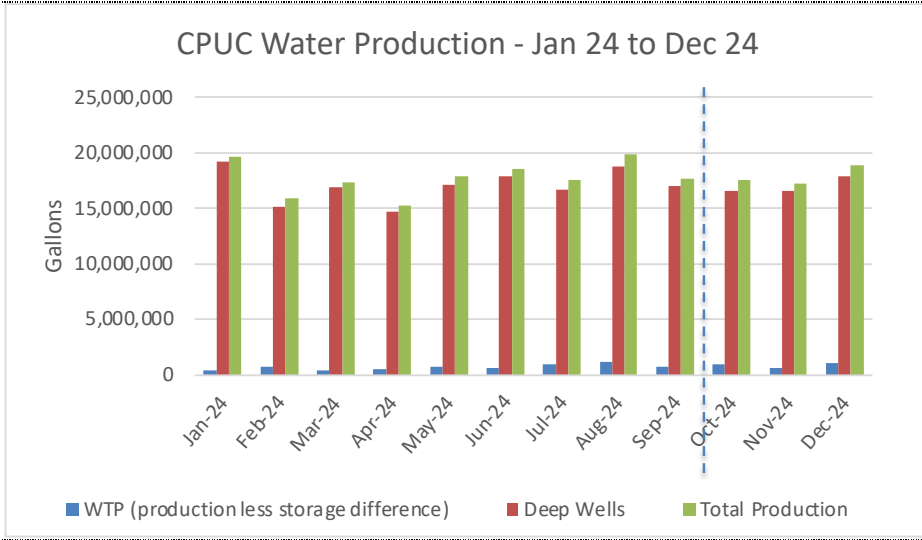


#### 2.6 Key Points:

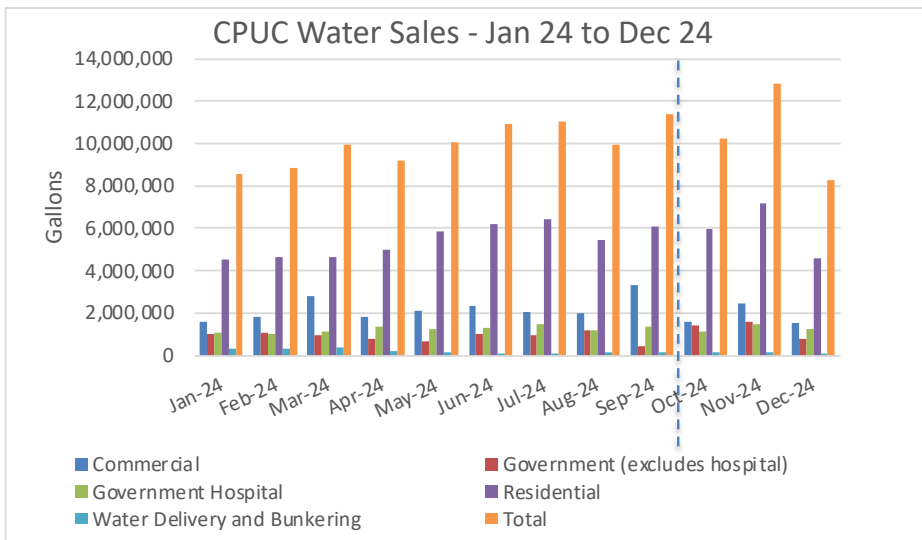
Solar PV: 3.9% of total generation in December;

- Avoided cost of fuel – US\$13,912.
- Tons of CO<sub>2</sub> avoided 41.1;
- The airport terminal roof solar system is still down for roof renewal – the impact of this is around 10% of solar generation

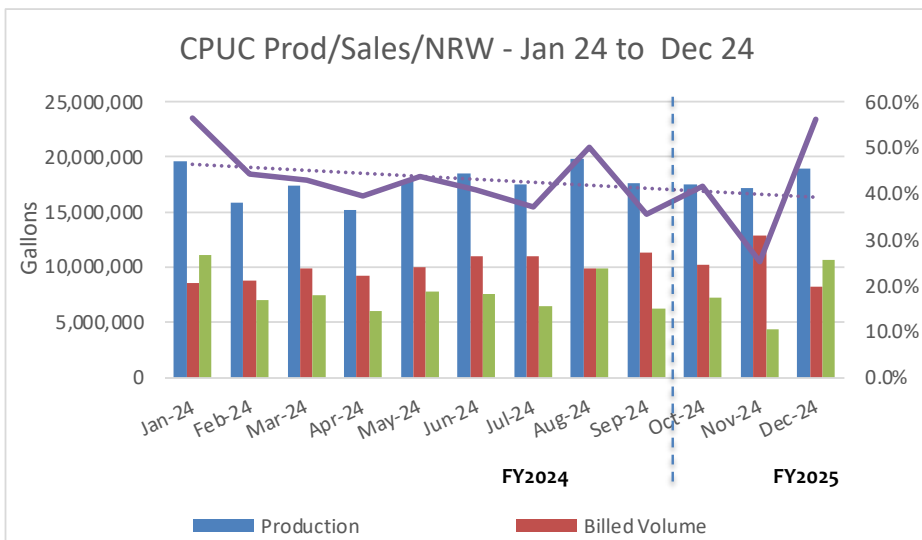
### 3 WATER PERFORMANCE GRAPHS



**1 Key Points:**



**Key Points:**



**Key Points:**  
November and December results should be viewed together. The average of the two is consistent with the average YTD at just over 40%



### Financial Table1 P & L Statement – FY2025: January 2024 – December 2024

	Jan 24	Feb 24	Mar 24	Apr 24	May 24	Jun 24	Jul 24	Aug 24	Sep 24	Oct 24	Nov 24	Dec 24	FY2025 YTD
<b>Revenue - US\$</b>													
<b>Operating revenue:</b>													
a. Power Sales	706,054	648,287	706,769	686,538	748,816	720,874	777,742	768,007	706,051	737,170	724,116	745,625	2,206,911
b. Water Sales	36,147	37,234	48,467	39,763	38,801	33,135	43,218	35,534	42,057	38,856	50,154	33,481	122,492
c. Sewer Sales	15,440	12,400	18,499	15,536	14,789	17,197	17,530	21,175	23,766	15,992	20,776	15,187	51,956
d. Other operating revenue	4,561	5,103	5,046	10,641	13,923	8,640	9,196	8,980	49,304	5,740	6,865	8,285	20,890
<b>Revenue - Total</b>	<b>762,203</b>	<b>703,025</b>	<b>778,781</b>	<b>752,477</b>	<b>816,330</b>	<b>779,846</b>	<b>847,686</b>	<b>833,697</b>	<b>821,178</b>	<b>797,758</b>	<b>801,912</b>	<b>802,579</b>	<b>2,402,249</b>
<b>Expenses - US\$</b>													
Fuel & Lubricants	369,924	334,670	403,214	371,104	395,997	392,657	410,765	412,826	357,887	371,612	348,072	366,197	1,085,880
Salaries, Wages & Benefits	97,975	134,752	115,325	117,164	113,945	106,019	118,690	115,185	109,293	128,330	115,166	140,267	383,763
Contractual Services	3,276	3,007	3,328	3,199	3,058	3,064	3,120	3,121	3,128	3,274	2,953	3,224	9,451
O&M - Power Generation	13,158	8,415	30,099	10,756	11,069	14,234	14,394	20,936	50,163	20,122	11,014	25,434	56,569
O&M - Power Distribution	5,926	7,506	3,236	10,142	5,035	1,890	3,616	5,602	10,766	11,896	2,743	6,957	21,597
O&M - Water	20,744	2,785	7,740	4,829	4,821	4,809	4,706	6,423	14,208	7,799	11,503	9,158	28,460
O&M - Sewer	2,547	662	731	0	4,389	72	1,689	2,564	0	4,472	968	7,740	13,180
Finance & Administration Overheads	43,009	49,566	47,045	56,193	48,818	52,271	63,384	63,688	104,007	46,384	56,666	40,529	143,579
Vehicle & Eq. Fuel	18,395	11,770	19,848	10,753	10,578	11,660	14,680	11,236	7,072	14,880	12,590	31,185	58,655
CPUC Power Usage (incl. in O&M from Oct 15)	16,410	15,582	15,621	15,102	18,317	19,135	18,863	17,514	18,171	17,594	16,485	18,146	52,225
Tonoas Power Usage	11,612	11,040	12,400	11,925	12,354	11,969	11,964	12,780	11,772	12,480	12,743	13,403	38,627
Tonoas Distribution Expense	338	170	0	338	0	169	169	169	169	0	169	0	169
Support to Energy Office	0	0	0	0	0	0	0	0	0	3,295	0	3,638	6,933
Training	0	3,020	0	0	0	1,833	1,400	0	612	17,817	6,387	7,097	31,301
Board Expenses	441	62	510	780	1,322	815	1,584	11,073	53,529	0	0	0	0
<b>Expense - Total</b>	<b>603,755</b>	<b>583,006</b>	<b>659,097</b>	<b>612,286</b>	<b>629,703</b>	<b>620,596</b>	<b>669,026</b>	<b>683,117</b>	<b>740,778</b>	<b>659,955</b>	<b>597,459</b>	<b>672,975</b>	<b>1,930,389</b>
<b>Operating Income/(Loss)</b>	<b>158,447</b>	<b>120,019</b>	<b>119,684</b>	<b>140,190</b>	<b>186,627</b>	<b>159,250</b>	<b>178,660</b>	<b>150,579</b>	<b>80,400</b>	<b>137,803</b>	<b>204,454</b>	<b>129,604</b>	<b>471,860</b>
<b>Non-Cash Expenses - US\$</b>													
Depreciation	149,142	149,142	149,142	149,142	149,142	149,142	149,142	149,142	280,630	164,092	164,092	164,092	492,277
Interest Expense	3,954	3,954	3,954	3,954	3,954	3,954	3,954	3,954	14,689	3,953	3,953	3,953	11,859
<b>Non-Cash Expense - Total - US\$</b>	<b>153,096</b>	<b>153,096</b>	<b>153,096</b>	<b>153,096</b>	<b>153,096</b>	<b>153,096</b>	<b>153,096</b>	<b>153,096</b>	<b>295,319</b>	<b>168,045</b>	<b>168,045</b>	<b>168,045</b>	<b>504,136</b>
<b>Net Income/(Loss) - excluding grant support - US\$</b>	<b>5,352</b>	<b>-33,077</b>	<b>-33,411</b>	<b>-12,905</b>	<b>33,531</b>	<b>6,154</b>	<b>25,565</b>	<b>-2,517</b>	<b>-214,918</b>	<b>-30,243</b>	<b>36,408</b>	<b>-38,441</b>	<b>-32,275</b>
<b>Non-operating Income (Grant Support) - US\$</b>	<b>81,975</b>	<b>-28,333</b>	<b>-51,917</b>	<b>-48,763</b>	<b>-56,211</b>	<b>-70,083</b>	<b>-51,925</b>	<b>-430,158</b>	<b>-75,823</b>	<b>0</b>	<b>0</b>	<b>0</b>	<b>0</b>
<b>Net Income/(Loss) - including grant support - US\$</b>	<b>87,327</b>	<b>-61,409</b>	<b>-85,328</b>	<b>-61,668</b>	<b>-22,680</b>	<b>-63,928</b>	<b>-26,360</b>	<b>-432,675</b>	<b>-290,741</b>	<b>-30,243</b>	<b>36,408</b>	<b>-38,441</b>	<b>-32,275</b>

## Financial Table 2 Cash Flow and A/R Report – FY2025: January 2024 – December 2024

	Jan 24	Feb 24	Mar 24	Apr 24	May 24	Jun 24	Jul 24	Aug 24	Sep 24	Oct 24	Nov 24	Dec 24	FY2025 YTD
<b>Cash Flow Report - US\$</b>													
Receipts	1,173,088	701,170	546,504	923,034	980,312	596,657	804,312	744,317	1,129,608	874,737	878,445	767,932	2,521,114
Disbursements	1,520,889	565,008	373,425	1,083,877	748,459	822,343	918,324	629,547	1,170,650	822,291	988,377	700,295	2,510,963
Net receipts/Disbursements	-347,801	136,162	173,079	-160,843	231,853	-225,686	-114,012	114,770	-41,042	52,446	-109,932	67,637	10,151
Cash balance (beginning)	1,786,183	1,438,382	1,574,544	1,747,623	1,586,780	1,818,633	1,592,947	1,478,936	1,593,706	1,552,664	1,605,110	1,495,177	1,552,664
Cash balance (end)	1,438,382	1,574,544	1,747,623	1,586,780	1,818,633	1,592,947	1,478,936	1,593,706	1,552,664	1,605,110	1,495,177	1,562,815	1,562,815
<b>Other Financial Data - US\$</b>													
Cash in Hand	1,694	1,694	1,694	1,694	1,694	1,694	1,694	1,694	1,694	1,694	1,694	1,694	1,694
Cash in Banks (Bank Overdraft)	1,436,688	1,572,850	1,745,930	1,585,086	1,816,939	1,591,254	1,477,242	1,592,012	1,550,970	1,603,416	1,493,484	1,561,121	1,561,121
Stocks/Inventory	1,347,644	1,398,618	1,384,552	1,370,708	1,356,628	1,341,411	1,334,279	1,373,502	1,348,284	1,326,249	1,316,299	1,305,736	1,305,736
Trade Receivable	637,130	592,789	636,976	652,134	742,961	861,163	977,533	821,779	614,663	599,639	742,066	756,486	756,486
Prepaid Lease	515,461	537,154	533,604	530,680	532,344	546,671	582,404	588,086	587,351	680,639	709,844	744,079	744,079
Collateral with Vital Inc.	499,424	499,424	499,424	499,424	499,424	499,424	499,424	499,424	499,424	499,424	499,424	499,424	499,424
Current Payables (Fuel, Taxes, Payable to Fed Gov't, etc.)	935,208	931,231	1,174,744	961,710	1,179,927	1,050,444	970,275	1,101,085	899,607	987,247	1,042,162	1,057,322	1,057,322
Loans Payable	2,496,850	2,500,803	2,504,756	2,508,709	2,512,662	2,516,615	2,520,568	2,337,673	2,346,978	2,350,931	2,354,884	2,358,837	2,358,837
<b>Total Accounts Receivable (to date) - US\$</b>													
Government Power	457,193	461,753	469,081	497,056	578,120	658,847	761,995	594,621	180,206	183,179	255,534	229,066	229,066
Commercial Power	148,435	125,561	175,664	168,830	161,932	181,982	163,899	164,064	200,789	162,467	186,706	203,113	203,113
Residential Power	94,728	104,898	100,830	93,701	92,137	90,339	85,938	89,325	127,316	129,769	128,341	127,921	127,921
Water	286,723	255,842	232,700	231,594	242,380	250,859	272,967	268,665	338,377	326,200	359,321	374,486	374,486
Sewer	150,156	144,839	158,805	161,057	168,495	179,240	192,840	205,208	108,500	138,548	152,687	162,426	162,426
Allowance for Doubtful	-500,104	-500,104	-500,104	-500,104	-500,104	-500,104	-500,104	-500,104	-340,524	-340,524	-340,524	-340,524	-340,524
<b>Total</b>	<b>637,130</b>	<b>592,789</b>	<b>636,976</b>	<b>652,134</b>	<b>742,961</b>	<b>861,163</b>	<b>977,533</b>	<b>821,779</b>	<b>614,663</b>	<b>599,639</b>	<b>742,066</b>	<b>756,486</b>	<b>756,486</b>



### Financial Table 4 Water Sales Report – FY2025: January 2024 – December 2024

Water/Sewer Sales Report	Jan 24	Feb 24	Mar 24	Apr 24	May 24	Jun 24	Jul 24	Aug 24	Sep 24	Oct 24	Nov 24	Dec 24	FY2025 YTD
<b>Water Sales US\$</b>	\$	\$	\$	\$	\$	\$	\$	\$	\$	\$	\$	\$	\$
Government	10,686	10,382	10,492	11,084	9,962	11,689	12,366	12,226	7,642	13,185	15,932	10,113	39,230
Commercial	8,400	9,830	15,504	9,244	10,727	3,248	9,908	9,621	15,845	7,574	12,545	7,785	27,905
Residential	11,133	11,449	10,644	12,581	14,828	16,028	16,611	7,907	14,631	14,776	18,772	11,745	45,293
Provision for Billing Errors	5,929	5,574	11,827	6,854	3,285	2,170	4,332	5,781	3,939	3,321	2,906	3,838	10,065
<b>Total</b>	<b>36,147</b>	<b>37,234</b>	<b>48,467</b>	<b>39,763</b>	<b>38,801</b>	<b>33,135</b>	<b>43,218</b>	<b>35,534</b>	<b>42,057</b>	<b>38,856</b>	<b>50,154</b>	<b>33,481</b>	<b>122,492</b>
<b>Sewer Sales - US\$</b>													
Government	5,321	3,116	5,088	5,455	4,915	5,805	6,093	5,982	9,468	6,492	7,832	4,919	19,244
Commercial	6,816	7,208	9,451	6,563	8,085	7,750	7,612	7,405	10,363	6,692	8,834	6,812	22,338
Commercial with No Water	0	0	0	0	0	0	0	0	0	0	0	0	0
Residential	3,303	2,075	3,961	3,518	1,790	3,642	3,825	7,788	3,936	2,807	4,110	3,456	10,373
Residential with No Water	0	0	0	0	0	0	0	0	0	0	0	0	0
Provision for Billing Errors	0	0	0	0	0	0	0	0	0	0	0	0	0
<b>Sewer Sales</b>	<b>15,440</b>	<b>12,400</b>	<b>18,499</b>	<b>15,536</b>	<b>14,789</b>	<b>17,197</b>	<b>17,530</b>	<b>21,175</b>	<b>23,766</b>	<b>15,992</b>	<b>20,776</b>	<b>15,187</b>	<b>51,956</b>
													0
<b>Total Water &amp; Sewer Sales</b>	<b>51,587</b>	<b>49,634</b>	<b>66,966</b>	<b>55,298</b>	<b>53,590</b>	<b>50,332</b>	<b>60,748</b>	<b>56,710</b>	<b>65,823</b>	<b>54,848</b>	<b>70,931</b>	<b>48,669</b>	<b>174,448</b>
<b>Water Sales - Gallons</b>													
Government	2,099,680	2,048,310	2,066,850	2,163,760	1,926,540	2,301,550	2,397,620	2,353,740	1,793,420	2,531,120	3,087,030	2,037,610	7,655,760
Commercial	1,612,323	1,830,714	2,802,532	1,812,168	2,114,148	2,345,632	2,075,041	1,972,437	3,342,782	1,584,339	2,481,175	1,543,376	5,608,890
Residential	4,552,736	4,653,958	4,661,498	4,987,890	5,835,360	6,195,252	6,433,020	5,445,430	6,109,180	5,997,840	7,153,183	4,577,570	17,728,593
Water Delivery & Bunkering	313,000	307,000	390,000	234,000	176,000	109,000	121,500	161,500	126,500	130,700	133,000	115,000	378,700
<b>Total</b>	<b>8,577,739</b>	<b>8,839,982</b>	<b>9,920,880</b>	<b>9,197,818</b>	<b>10,052,048</b>	<b>10,951,434</b>	<b>11,027,181</b>	<b>9,933,107</b>	<b>11,371,882</b>	<b>10,243,999</b>	<b>12,854,388</b>	<b>8,273,556</b>	<b>31,371,943</b>

## Financial Table 5 Key Performance Indicators – FY2025: January 2024 – December 2024

	Jan 24	Feb 24	Mar 24	Apr 24	May 24	Jun 24	Jul 24	Aug 24	Sep 24	Oct 24	Nov 24	Dec 24	FY2025 YTD
<b>1a. Power Loss - Weno</b>	<b>10.4%</b>	<b>8.9%</b>	<b>11.3%</b>	<b>12.7%</b>	<b>10.6%</b>	<b>10.5%</b>	<b>7.6%</b>	<b>7.0%</b>	<b>12.4%</b>	<b>8.3%</b>	<b>6.9%</b>	<b>6.9%</b>	<b>7.4%</b>
Total Power Generated - kWh	1,513,136	1,379,555	1,543,421	1,502,920	1,603,984	1,562,153	1,642,954	1,604,281	1,594,350	1,626,795	1,589,147	1,625,993	4,841,935
Total Power Billed - kWh	1,355,566	1,256,431	1,368,852	1,311,723	1,434,301	1,397,790	1,517,570	1,492,689	1,397,397	1,491,384	1,479,615	1,512,993	4,483,993
Generation Loss (actual from Jun 17)	13,875	12,977	13,354	12,847	14,619	12,929	16,354	15,661	11,796	14,051	14,354	14,384	2,523
Distribution Loss Derived - kWh	105,867	75,659	122,630	140,777	114,964	112,380	67,956	55,824	145,298	80,690	55,449	57,966	194,105
Commercial Loss (assumed 2.5%) - kWh	37,828	34,489	38,586	37,573	40,100	39,054	41,074	40,107	39,859	40,670	39,729	40,650	121,048
Total Loss - kWh	157,570	123,124	174,569	191,197	169,683	164,363	125,384	111,592	196,953	135,411	109,532	113,000	357,942
Distribution loss %	7.0%	5.5%	7.9%	9.4%	7.2%	7.2%	4.1%	3.5%	9.1%	5.0%	3.5%	3.6%	4.0%
<b>1b. Power loss - Tonoas</b>	<b>12.6%</b>	<b>14.9%</b>	<b>15.5%</b>	<b>13.6%</b>	<b>14.6%</b>	<b>10.5%</b>	<b>2.1%</b>	<b>6.0%</b>	<b>14.0%</b>	<b>2.1%</b>	<b>15.0%</b>	<b>13.7%</b>	<b>10.4%</b>
Tonoas - Power Purchased - kWh	31,200	29,880	32,920	31,760	32,920	32,680	33,000	35,040	33,040	36,640	37,360	38,800	112,800
Tonoas - Power Billed - kWh	27,261	25,438	27,828	27,455	28,124	29,243	32,293	32,921	28,407	35,853	31,751	33,493	101,098
Power Loss - kWh	3,939	4,442	5,092	4,305	4,796	3,437	707	2,119	4,633	787	5,609	5,307	11,702
<b>1c. Power Loss - Whole Company</b>	<b>10.5%</b>	<b>9.1%</b>	<b>11.4%</b>	<b>12.7%</b>	<b>10.7%</b>	<b>10.5%</b>	<b>7.5%</b>	<b>6.9%</b>	<b>12.4%</b>	<b>8.2%</b>	<b>7.1%</b>	<b>7.1%</b>	<b>7.5%</b>
Power Generated & Purchased	1,544,336	1,409,435	1,576,341	1,534,680	1,636,904	1,594,833	1,675,954	1,639,321	1,627,390	1,663,435	1,626,507	1,664,793	4,954,735
Power Billed	1,382,827	1,281,869	1,396,680	1,339,178	1,462,425	1,427,033	1,549,863	1,525,610	1,425,805	1,527,238	1,511,367	1,546,486	4,585,091
Power Loss - kWh	161,509	127,566	179,661	195,502	174,479	167,800	126,091	113,711	201,585	136,197	115,140	118,307	369,644
<b>1d. Non Revenue Water</b>	<b>56.4%</b>	<b>44.3%</b>	<b>42.9%</b>	<b>39.6%</b>	<b>43.7%</b>	<b>40.8%</b>	<b>37.1%</b>	<b>50.0%</b>	<b>35.6%</b>	<b>41.5%</b>	<b>25.3%</b>	<b>56.3%</b>	<b>41.5%</b>
Water Produced (million gallons)	19.65	15.86	17.37	15.23	17.85	18.49	17.52	19.89	17.67	17.51	17.20	18.92	53.63
Water Billed (million gallons)	8.58	8.84	9.92	9.20	10.05	10.95	11.03	9.93	11.37	10.24	12.85	8.27	31.37
<b>2. Current ratio</b>	<b>6.41</b>	<b>6.38</b>	<b>5.15</b>	<b>6.01</b>	<b>4.98</b>	<b>5.76</b>	<b>6.12</b>	<b>5.31</b>	<b>5.76</b>	<b>5.11</b>	<b>5.07</b>	<b>4.95</b>	<b>5.35</b>
	5.33	5.43	4.35	4.99	4.33	5.20	5.03	3.93	4.65	4.63	4.90	4.44	4.83
	27.78	37.07	32.54	33.80	31.48	32.71	30.42	28.36	19.92	24.51	26.90	22.40	26.37
	9.12	8.22	9.47	10.53	9.28	11.04	10.27	11.59	5.07	8.65	12.03	7.47	9.63
<b>3. ROA (excludes other operating income/grant support)</b>	<b>0.00</b>	<b>0.00</b>	<b>0.00</b>	<b>0.00</b>	<b>0.00</b>	<b>0.00</b>	<b>0.00</b>	<b>0.00</b>	<b>-0.01</b>	<b>0.00</b>	<b>0.00</b>	<b>0.00</b>	<b>-0.13%</b>
Power Business	0.00	0.00	0.00	0.00	0.01	0.00	0.00	0.00	-0.01	0.00	0.01	0.00	1.26%
Water Business	-0.01	-0.01	-0.01	-0.01	-0.01	-0.01	-0.01	-0.01	-0.03	-0.01	-0.01	-0.02	-4.08%
Sewer Business	-0.01	-0.01	-0.01	-0.01	-0.01	-0.01	-0.01	-0.01	0.00	-0.01	-0.01	-0.01	-2.74%
<b>4. Operating ratio</b>	<b>0.80</b>	<b>0.84</b>	<b>0.85</b>	<b>0.83</b>	<b>0.78</b>	<b>0.80</b>	<b>0.80</b>	<b>0.83</b>	<b>0.96</b>	<b>0.83</b>	<b>0.75</b>	<b>0.85</b>	<b>0.81</b>
Power Business	0.74	0.79	0.83	0.79	0.74	0.77	0.76	0.79	0.90	0.78	0.72	0.77	0.76
Water Business	1.42	1.04	0.89	0.97	0.99	1.13	0.96	1.24	1.53	1.21	0.92	1.57	1.19
Sewer Business	1.98	2.63	1.69	1.83	2.27	1.75	1.99	1.56	1.74	2.47	1.52	3.04	2.26
<b>5. Days in Accounts Receivable</b>	<b>26.07</b>	<b>24.63</b>	<b>25.52</b>	<b>26.37</b>	<b>28.70</b>	<b>33.50</b>	<b>36.14</b>	<b>30.89</b>	<b>23.89</b>	<b>23.47</b>	<b>28.00</b>	<b>29.52</b>	<b>23.17</b>
Power Business	30.75	30.96	32.70	33.19	34.45	38.75	40.33	34.23	21.60	19.99	23.64	23.29	19.82
Water Business	245.89	199.26	148.84	174.73	193.65	227.13	195.80	234.38	241.37	260.25	214.93	346.73	245.00
Sewer Business	301.48	338.74	266.12	311.01	353.18	312.68	341.02	300.42	136.96	268.58	220.47	331.54	245.33

## Financial Table 6 CPUC Performance Against Budget FY 2025

CPUC - WHOLE BUSINESS INCOME STATEMENT	FY2025	Budget YTD	Actual YTD	Variance YTD	Variance %
<b>REVENUE</b>					
Power Operating Revenue	\$9,020,445	\$2,255,111	\$2,206,911	-\$48,200	-2.1%
Water Operating Revenue	\$494,118	\$123,530	\$122,492	-\$1,037	-0.8%
Sewerage Operating Revenue	\$186,444	\$46,611	\$51,956	\$5,345	11.5%
<b>TOTAL OPERATING REVENUE</b>	<b>\$9,701,007</b>	<b>\$2,425,252</b>	<b>\$2,381,359</b>	<b>-\$43,893</b>	<b>-1.8%</b>
<b>Other Revenue</b>					
Power	\$6,698	\$1,675	\$9,765	\$8,091	483.1%
Water	\$3,801	\$950	\$10,475	\$9,525	1002.4%
Sewer	\$1,175	\$294	\$650	\$356	-
<b>OTHER REVENUE TOTAL</b>	<b>\$11,674</b>	<b>\$2,919</b>	<b>\$20,890</b>	<b>\$17,971</b>	<b>615.8%</b>
<b>TOTAL OPERATING REVENUE</b>	<b>\$9,712,681</b>	<b>\$2,428,170</b>	<b>\$2,402,249</b>	<b>-\$25,921</b>	<b>-1.1%</b>
<b>EXPENDITURE</b>					
Power Variable Cost	\$5,108,453	\$1,277,113	\$1,124,507	-\$152,607	-11.9%
Power Fixed Cost	\$2,101,068	\$525,267	\$542,989	\$17,722	3.4%
Water Variable Cost	\$69,085	\$17,271	\$17,927	\$656	3.8%
Water Fixed Cost	\$473,572	\$118,393	\$127,731	\$9,338	7.9%
Sewer Variable Cost	\$86,848	\$21,712	\$23,118	\$1,406	6.5%
Sewer Fixed Cost	\$368,651	\$92,163	\$94,116	\$1,953	2.1%
<b>TOTAL OPERATING EXPENSE</b>	<b>\$8,207,678</b>	<b>\$2,051,920</b>	<b>\$1,930,389</b>	<b>-\$121,531</b>	<b>-5.9%</b>
<b>OPERATING INCOME</b>					
Operating Income Power	\$1,817,622	\$454,406	\$549,181	\$94,775	20.9%
Operating Income Water	-\$44,739	-\$11,185	-\$12,691	-\$1,507	13.5%
Operating Income Sewer	-\$267,881	-\$66,970	-\$64,629	\$2,341	-3.5%
<b>OPERATING INCOME (Excl Int &amp; Deprec.)</b>	<b>\$1,505,003</b>	<b>\$376,251</b>	<b>\$471,860</b>	<b>\$95,610</b>	<b>25.4%</b>
<b>INTEREST</b>					
Interest Power	\$58,073	\$14,518	\$11,859	-\$2,659	-18.3%
Interest Water	\$0	\$0	\$0	\$0	0.0%
Interest Sewer	\$0	\$0	\$0	\$0	0.0%
<b>TOTAL INTEREST</b>	<b>\$58,073</b>	<b>\$14,518</b>	<b>\$11,859</b>	<b>-\$2,659</b>	<b>-18.3%</b>
<b>DEPRECIATION</b>					
Depreciation Power	\$1,286,446	\$321,612	\$321,611	\$0	0.0%
Depreciation Water	\$570,194	\$142,549	\$142,548	\$0	0.0%
Depreciation Sewer	\$112,469	\$28,117	\$28,117	\$0	0.0%
<b>TOTAL DEPRECIATION</b>	<b>\$1,969,109</b>	<b>\$492,277</b>	<b>\$492,277</b>	<b>\$0</b>	<b>0.0%</b>
Depreciation as % of Revenue	18.3%	20.3%	20.5%	0.2%	1.1%
<b>OPERATING INCOME (Incl. Int. &amp; Deprec.)</b>					
Total Operating Income Power	\$473,103	\$118,276	\$215,710	\$97,435	82.4%
Total Operating Income Water	-\$614,933	-\$153,733	-\$155,240	-\$1,506	1.0%
Total Operating Income Sewer	-\$380,350	-\$95,087	-\$92,746	\$2,341	-2.5%
<b>TOTAL OPERATING INCOME (Incl. Int &amp; Deprec.)</b>	<b>-\$522,179</b>	<b>-\$130,545</b>	<b>-\$32,275</b>	<b>\$98,269</b>	<b>-75.3%</b>
<b>NON-OPERATING REVENUES/(EXPENSES)</b>					
Management Support	\$0	\$0	\$0	\$0	-
Regional Coordinators SPC	-\$137,723	-\$34,431	-\$5,050	\$29,381	-85.3%
PMU Staffing - ADB	-\$503,738	-\$125,934	-\$588,214	-\$462,280	367.1%
INTEREST INCOM \$	\$0	\$0	\$66	\$66	-
<b>TOTAL NON-OPERATING REVENUES/(EXPENSES)</b>	<b>-\$641,461</b>	<b>-\$160,365</b>	<b>-\$593,198</b>	<b>-\$432,833</b>	<b>269.9%</b>
<b>CAPITAL GRANT SUPPORT</b>					
Compact Management Grant	\$0	\$0	\$0	\$0	-
SPC Grant - Regional Development	\$137,723	\$34,431	\$15,197	-\$19,234	-55.9%
ADB CWSSP - Staffing	\$503,738	\$125,934	\$422,012	\$296,077	235.1%
Other Grant Support	\$0	\$0	\$0	\$0	-
<b>TOTAL CAPITAL GRANT SUPPORT</b>	<b>\$641,461</b>	<b>\$160,365</b>	<b>\$437,209</b>	<b>\$276,843</b>	<b>172.6%</b>
Project Grants	\$0	\$0	\$0	\$0	-
<b>CHANGE IN NET ASSETS</b>	<b>\$119,282</b>	<b>\$29,820</b>	<b>-\$188,265</b>	<b>-\$218,085</b>	<b>-731.3%</b>

**Power Table 1 Power Operation Indicators – FY2025: January 2024 – December 2025**

	Jan 24	Feb 24	Mar 24	Apr 24	May 24	Jun 24	Jul 24	Aug 24	Sep 24	Oct 24	Nov 24	Dec 24	FY2025
<b>Generation Statistics</b>													
Diesel Generation - kWh	1,454,626	1,330,769	1,477,265	1,437,794	1,546,373	1,497,782	1,575,281	1,535,502	1,538,943	1,560,024	1,533,772	1,562,245	4,656,041
Peak Generation - kW	2,711	2,700	2,726	2,778	2,927	2,999	2,968	2,968	2,968	3,026	3,026	3,105	3,026
Fuel Consumption - Gallons	97,068	88,505	98,670	95,679	102,256	103,413	104,371	97,759	98,726	99,905	101,697	99,737	301,339
Average Fuel Price (\$/Gallon)	3.75	3.73	3.82	3.81	4.81	3.69	3.64	3.67	3.57	3.36	3.37	3.42	3.38
Load Factor (%)	77%	70%	78%	74%	75%	72%	76%	74%	74%	74%	72%	72%	27%
Capacity Factor (%)	48%	48%	49%	50%	52%	54%	53%	53%	53%	54%	54%	55%	41%
Availability Factor (%)	100%	100%	100%	100%	100%	100%	100%	100%	100%	100%	100%	100%	0%
Reserve Plant Margin (%)	188%	189%	186%	181%	166%	160%	163%	163%	163%	158%	158%	151%	158%
<b>Solar PV Generation - kWh</b>													
Solar PV Generation - kWh	58,510	48,786	66,156	65,126	57,611	64,371	67,673	68,779	55,407	66,771	55,375	63,748	185,894
Solar Generation %	3.9%	3.5%	4.3%	4.3%	3.6%	4.1%	4.1%	4.3%	3.5%	4.1%	3.5%	3.9%	3.8%
Peak PV Generation - kW	413	344	467	460	407	454	478	485	391	471	391	450	167
Avoided Fuel - Gallons	3,904	3,245	4,419	4,334	3,810	4,444	4,484	4,379	3,554	4,276	3,672	4,070	12,031
Avoided Cost of Fuel - US\$	14,657	12,102	16,879	16,497	18,311	16,413	16,311	16,056	12,681	14,369	12,362	13,912	40,686
Tons of CO2 avoided	39.4	32.8	44.6	43.8	38.5	44.9	45.3	44.2	35.9	43.2	37.1	41.1	121.5
Labour Productivity (kWh/Emp/d)	1,623	1,485	1,649	1,605	1,726	1,672	1,758	1,714	1,718	1,741	1,712	1,744	737
<b>SFOC (kWh/gal)</b>													
DG1 - GE 1.8	15.51	15.69	15.33	15.63	15.25	15.14	15.46	15.89	16.96	16.54	15.40	16.15	15.91
DG2 - GE 1.8	15.50	15.57	15.81	15.65	15.89	14.10	15.49	16.03	16.02	16.07	15.44	16.22	15.92
DG3 - CAT 1.6	-	-	-	-	-	-	-	-	-	-	-	-	-
DG4 - CAT 1.3	14.18	14.14	13.83	14.01	14.00	14.00	13.97	13.13	13.02	14.50	14.17	14.00	14.23
DG5 - CAT 1.3	14.00	13.87	14.00	13.88	14.27	14.00	13.92	14.51	14.07	14.37	14.00	14.00	14.16
<b>SLOC (kWh/gal)</b>													
DG1 - GE 1.8	4,473	5,729	6,560	8,824	1,644	10,116	5,234	6,786	5,054	812	7,719	6,247	2,971
DG2 - GE 1.8	9,596	11,376	1,834	9,618	1,484	11,679	1,244	10,474	2,164	9,223	5,549	7,428	7,311
DG3 - CAT 1.6	0	0	0	0	0	0	0	0	0	0	0	0	0
DG4 - CAT 1.3	0	0	0	0	0	0	0	0	0	0	0	0	3,058
DG5 - CAT 1.3	0	0	0	0	0	0	0	0	0	0	0	0	0
CAT #3 - Retired May 2017	0	0	0	0	0	0	0	0	0	0	0	0	0
Forced Outage Factor (%)	0.000%	0.000%	0.000%	0.000%	0.000%	0.005%	0.000%	0.000%	0.000%	0.039%	0.003%	0.000%	0.005%
Planned Outage Factor (%)	0.000%	0.000%	0.000%	0.000%	0.000%	0.000%	0.000%	0.000%	0.000%	0.000%	0.000%	0.000%	0.000%
<b>Distribution</b>													
Customers/Employee	25	25	25	25	25	25	25	25	25	25	25	25	25
Transformer Utilisation (%)	25.5%	25.4%	25.6%	26.1%	27.5%	28.2%	27.9%	27.9%	27.9%	28.5%	28.5%	29.2%	28.5%
Distribution Losses (%)	0.0%	0.0%	0.0%	0.0%	0.0%	0.0%	0.0%	0.0%	0.0%	0.0%	0.0%	0.0%	0.0%
SAIDI (hours/consumer)	0.11	0.00	0.00	0.04	0.00	0.28	0.09	0.00	0.19	0.05	0.02	0.05	0.00
SAIFI	0.00	0.00	0.00	0.00	0.00	0.01	0.00	0.00	0.00	0.00	0.00	0.00	0.000
Average Cost (\$/kWh)	0.241	0.239	0.244	0.242	0.306	0.244	0.231	0.223	0.221	0.206	0.215	0.210	0.210

## Power Table 2 Power Generation Statistics – FY2025: January 2024 – December 2024

	Jan 24	Feb 24	Mar 24	Apr 24	May 24	Jun 24	Jul 24	Aug 24	Sep 24	Oct 24	Nov 24	Dec 24	FY2025 YTD
<b>Generation - Engine Output (kWh)</b>													
DG1- GE 1.8	326,494	372,365	380,467	511,817	603,247	627,167	795,546	454,662	298,166	284,993	625,255	712,108	1,622,356
DG2 - GE 1.8	623,723	511,920	585,067	442,412	514,840	420,433	426,670	837,924	826,639	802,381	549,336	519,968	1,871,685
DG3 - CAT 1.6	0	0	0	0	0	0	4	0	0	0	0	0	0
DG4 - CAT 1.3	251,512	215,953	331,497	262,583	204,977	246,844	5,268	20,883	18,347	228,746	174,977	207,777	611,500
DG5 - CAT 1.3	252,897	230,531	180,234	220,982	223,309	203,338	347,793	222,033	395,791	243,904	184,204	122,392	550,500
CAT #3 - Retired May 2017	0	0	0	0	0	0	0	0	0	0	0	0	0
<b>Diesel Generation Total (kWh)</b>	<b>1,454,626</b>	<b>1,330,769</b>	<b>1,477,265</b>	<b>1,437,794</b>	<b>1,546,373</b>	<b>1,497,782</b>	<b>1,575,281</b>	<b>1,535,502</b>	<b>1,538,943</b>	<b>1,560,024</b>	<b>1,533,772</b>	<b>1,562,245</b>	<b>4,656,041</b>
PP Solar F1	9,464	8,818	10,334	8,581	9,162	12,155	12,155	9,587	7,827	16,080	7,927	9,531	33,538
High School Solar F1	14,880	6,480	14,520	17,400	18,720	18,240	18,720	19,440	15,480	16,080	15,600	16,200	47,880
PP Solar F3	15,538	14,726	17,301	14,437	11,682	14,702	15,176	16,536	13,212	14,111	13,177	15,618	42,906
Airport Roof F4	0	0	0	0	0	0	0	0	0	0	0	0	0
Airport Carpark F4	12,288	12,605	16,906	14,726	15,691	13,329	15,320	16,536	13,401	14,530	13,195	15,756	43,481
WWTP F4	6,340	6,157	7,095	9,982	2,356	5,945	6,302	6,680	5,487	5,970	5,476	6,643	18,089
<b>Solar PV Generation Total (kWh)</b>	<b>58,510</b>	<b>48,786</b>	<b>66,156</b>	<b>65,126</b>	<b>57,611</b>	<b>64,371</b>	<b>67,673</b>	<b>68,779</b>	<b>55,407</b>	<b>66,771</b>	<b>55,375</b>	<b>63,748</b>	<b>185,894</b>
<b>Total Generation (kWh)</b>	<b>1,513,136</b>	<b>1,379,555</b>	<b>1,543,421</b>	<b>1,502,920</b>	<b>1,603,984</b>	<b>1,562,153</b>	<b>1,642,954</b>	<b>1,604,281</b>	<b>1,594,350</b>	<b>1,626,795</b>	<b>1,589,147</b>	<b>1,625,993</b>	<b>4,841,935</b>
<b>Maximum Demand (kW)</b>	<b>2,711</b>	<b>2,700</b>	<b>2,726</b>	<b>2,778</b>	<b>2,927</b>	<b>2,999</b>	<b>2,968</b>	<b>2,968</b>	<b>2,960</b>	<b>3,026</b>	<b>3,026</b>	<b>3,105</b>	<b>3,026</b>
<b>Engine Rating kW (at 0.8 PF)</b>													
DG1- GE 1.8	1,800	1,800	1,800	1,800	1,800	1,800	1,800	1,800	1,800	1,800	1,800	1,800	1,800
DG2 - GE 1.8	1,800	1,800	1,800	1,800	1,800	1,800	1,800	1,800	1,800	1,800	1,800	1,800	1,800
DG3 - CAT 1.6	1,600	1,600	1,600	1,600	1,600	1,600	1,600	1,600	1,600	1,600	1,600	1,600	1,600
DG4 - CAT 1.3	1,300	1,300	1,300	1,300	1,300	1,300	1,300	1,300	1,300	1,300	1,300	1,300	1,300
DG5 - CAT 1.3	1,300	1,300	1,300	1,300	1,300	1,300	1,300	1,300	1,300	1,300	1,300	1,300	1,300
CAT #3 - Retired May 2017	1,200	1,200	1,200	1,200	1,200	1,200	1,200	1,200	1,200	1,200	1,200	1,200	1,200
<b>Station Services (kWh)</b>	<b>16,941</b>	<b>16,022</b>	<b>16,506</b>	<b>15,296</b>	<b>17,969</b>	<b>15,829</b>	<b>19,681</b>	<b>18,874</b>	<b>15,061</b>	<b>17,112</b>	<b>16,879</b>	<b>18,453</b>	<b>52,444</b>
<b>Running Hours</b>													
DG1- GE 1.8	276	315	303	402	486	537	659	356	332	252	540	540	1,332
DG2 - GE 1.8	492	429	460	345	416	351	881	735	201	688	478	478	1,644
DG3 - CAT 1.6	0	0	0	0	0	0	0	0	0	0	0	0	0
DG4 - CAT 1.3	288	287	535	332	304	343	18	59	19	377	0	0	377
DG5 - CAT 1.3	353	385	225	312	320	310	520	404	483	322	255	255	832
CAT #3 - Retired May 2017	0	0	0	0	0	0	0	0	0	0	0	0	0
<b>Total Hours</b>	<b>1,409</b>	<b>1,416</b>	<b>1,523</b>	<b>1,391</b>	<b>1,526</b>	<b>1,541</b>	<b>2,078</b>	<b>1,554</b>	<b>1,035</b>	<b>1,639</b>	<b>1,273</b>	<b>1,273</b>	<b>4,185</b>



### Power Table 3 Fuel & Lube Oil Statistics - FY2025: January 2024 – December 2024

	Jan 24	Feb 24	Mar 24	Apr 24	May 24	Jun 24	Jul 24	Aug 24	Sep 24	Oct 24	Nov 24	Dec 24	FY2025 YTD
<b>Fuel Consumption (Gallons)</b>													
DG1- GE 1.8	21,048	23,737	24,815	32,746	39,560	41,427	51,449	28,609	17,584	17,228	40,612	44,099	101,939
DG2- GE 1.8	40,228	32,874	37,003	28,262	32,405	29,827	27,553	52,256	51,613	49,929	35,579	32,054	117,562
DG3- CAT 1.6	0	0	0	0	0	0	0	0	0	0	0	0	0
DG4- CAT 1.3	17,733	15,276	23,978	18,745	14,641	17,633	377	1,590	1,409	15,776	12,348	14,841	42,966
DG5- CAT 1.3	18,059	16,618	12,874	15,926	15,650	14,525	24,991	15,303	28,120	16,972	13,157	8,742	38,872
CAT #3 - Retired May 2017	0	0	0	0	0	0	0	0	0	0	0	0	0
<b>Total Fuel Consumption (Gals)</b>	<b>97,068</b>	<b>88,505</b>	<b>98,670</b>	<b>95,679</b>	<b>102,256</b>	<b>103,413</b>	<b>104,371</b>	<b>97,759</b>	<b>98,726</b>	<b>99,905</b>	<b>101,697</b>	<b>99,737</b>	<b>301,339</b>
<b>Average Fuel Price (\$/Gallon)</b>	<b>3.75</b>	<b>3.73</b>	<b>3.82</b>	<b>3.81</b>	<b>4.81</b>	<b>3.69</b>	<b>3.64</b>	<b>3.67</b>	<b>3.57</b>	<b>3.36</b>	<b>3.37</b>	<b>3.42</b>	<b>3.38</b>
<b>Lube Oil Consumption (Gallons)</b>													
DG1- GE 1.8	73	65	58	58	72	62	152	67	59	86	81	114	281
DG2- GE 1.8	65	45	54	46	52	36	48	80	117	87	99	70	256
DG3- CAT 1.6	0	0	0	0	0	0	0	0	0	0	0	0	0
DG4- CAT 1.3	0	0	0	0	0	0	0	0	0	0	10	0	10
DG5- CAT 1.3	0	0	0	0	0	0	0	0	0	0	0	0	0
CAT #3 - Retired May 2017	0	0	0	0	0	0	0	0	0	0	0	0	0
<b>Total LO Consumption (Gals)</b>	<b>138</b>	<b>110</b>	<b>112</b>	<b>104</b>	<b>124</b>	<b>98</b>	<b>200</b>	<b>147</b>	<b>176</b>	<b>173</b>	<b>190</b>	<b>184</b>	<b>547</b>
<b>Oil Change Log (75 Gal/Change)</b>													
DG1- GE 1.8	0	0	0	0	295	0	0	0	0	265	0	0	265
DG2- GE 1.8	0	0	265	0	295	0	295	0	265	0	0	0	0
DG3- CAT 1.6	0	0	0	0	0	0	0	0	0	0	0	0	0
DG4- CAT 1.3	95	0	95	0	95	95	0	0	0	95	0	95	190
DG5- CAT 1.3	0	95	95	0	95	95	95	95	95	0	95	0	95
CAT #3 - Retired May 2017	0	0	0	0	0	0	0	0	0	0	0	0	0
<b>Total Oil Change Volume (Gals)</b>	<b>95</b>	<b>95</b>	<b>455</b>	<b>0</b>	<b>780</b>	<b>190</b>	<b>390</b>	<b>95</b>	<b>360</b>	<b>360</b>	<b>95</b>	<b>95</b>	<b>550</b>

**Power Table 4 Distribution Feeder Statistics - FY2025: January 2024 - December 2024**

FEEDER STATISTICS	Jan 24	Feb 24	Mar 24	Apr 24	May 24	Jun 24	Jul 24	Aug 24	Sep 24	Oct 24	Nov 24	Dec 24	FY2025
Feeder 1 Load	379,056	331,571	387,827	358,891	404,582	388,954	405,747	394,470	374,995	401,666	379,521	392,193	1,173,380
Feeder 2 Load	132,931	127,245	136,083	140,001	141,509	122,332	128,954	125,716	158,597	141,600	134,114	119,741	395,455
Feeder 3 Load	454,639	416,390	448,223	439,562	449,566	441,053	468,425	458,442	464,628	460,263	449,891	459,425	1,369,579
Feeder 4 Load	375,663	344,701	376,769	373,328	387,596	383,096	403,573	395,652	378,242	395,835	394,873	417,328	1,208,036
Feeder 5 Load	156,972	146,671	181,165	178,291	206,112	213,789	219,901	214,340	206,092	213,380	216,394	222,922	652,696
<b>Total Feeder Load (kWh)</b>	<b>1,499,261</b>	<b>1,366,578</b>	<b>1,530,067</b>	<b>1,490,073</b>	<b>1,589,365</b>	<b>1,549,224</b>	<b>1,626,600</b>	<b>1,588,620</b>	<b>1,582,554</b>	<b>1,612,744</b>	<b>1,574,793</b>	<b>1,611,609</b>	<b>4,799,146</b>
Feeder 1 Sales	339,761	292,393	345,214	273,282	327,677	321,550	372,987	356,217	330,129	353,388	366,462	326,677	1,046,527
Feeder 2 Sales	112,348	120,331	112,452	126,417	128,126	113,019	120,474	123,743	117,744	133,891	119,741	126,301	379,933
Feeder 3 Sales	405,767	372,837	426,608	385,467	408,604	391,398	434,939	423,989	402,750	423,950	443,807	430,273	1,298,030
Feeder 4 Sales	308,018	297,037	336,988	317,043	329,788	327,312	341,983	332,486	319,368	322,748	394,929	378,397	1,096,073
Feeder 5 Sales	113,099	104,855	157,391	132,839	154,334	168,570	174,091	167,446	157,108	168,447	222,922	178,822	570,191
<b>Total Feeder Sales (kWh)</b>	<b>1,278,994</b>	<b>1,187,454</b>	<b>1,378,653</b>	<b>1,235,049</b>	<b>1,348,528</b>	<b>1,321,849</b>	<b>1,444,473</b>	<b>1,403,882</b>	<b>1,327,099</b>	<b>1,402,423</b>	<b>1,547,861</b>	<b>1,440,470</b>	<b>4,390,754</b>
Feeder 1 Loss - kWh	39,295	39,178	42,613	85,609	76,905	67,404	32,760	38,253	44,866	48,278	13,059	65,516	126,853
Feeder 2 Loss - kWh	20,583	6,914	23,631	13,584	13,383	9,313	8,480	1,973	40,853	7,709	14,373	-6,560	15,522
Feeder 3 Loss - kWh	48,872	43,553	21,615	54,095	40,962	49,655	33,486	34,453	61,878	36,313	6,084	29,152	71,549
Feeder 4 Loss - kWh	67,645	47,664	39,781	56,285	57,808	55,784	61,590	63,166	58,874	73,087	-56	38,931	111,963
Feeder 5 Loss - kWh	43,873	41,816	23,774	45,452	51,778	45,219	45,810	46,894	48,984	44,933	-6,528	44,100	82,505
<b>Total Feeder Loss - kWh</b>	<b>220,267</b>	<b>179,124</b>	<b>151,414</b>	<b>255,024</b>	<b>240,837</b>	<b>227,375</b>	<b>182,127</b>	<b>184,738</b>	<b>255,455</b>	<b>210,321</b>	<b>26,932</b>	<b>171,139</b>	<b>408,392</b>
Feeder 1 Loss - %	10.4%	11.8%	11.0%	23.9%	19.0%	17.3%	8.1%	9.7%	12.0%	12.0%	3.4%	16.7%	10.8%
Feeder 2 Loss - %	15.5%	5.4%	17.4%	9.7%	9.5%	7.6%	6.6%	1.6%	25.8%	5.4%	10.7%	-5.5%	3.9%
Feeder 3 Loss - %	10.7%	10.5%	4.8%	12.3%	9.1%	11.3%	7.1%	7.5%	13.3%	7.9%	1.4%	6.3%	5.2%
Feeder 4 Loss - %	18.0%	13.8%	10.6%	15.1%	14.9%	14.6%	15.3%	16.0%	15.6%	18.5%	0.0%	9.3%	9.3%
Feeder 5 Loss - %	27.9%	28.5%	13.1%	25.5%	25.1%	21.2%	20.8%	21.9%	23.8%	21.1%	-3.0%	19.8%	12.6%
<b>Total Feeder Loss - %</b>	<b>14.7%</b>	<b>13.1%</b>	<b>9.9%</b>	<b>17.1%</b>	<b>15.2%</b>	<b>14.7%</b>	<b>11.2%</b>	<b>11.6%</b>	<b>16.1%</b>	<b>13.0%</b>	<b>1.7%</b>	<b>10.6%</b>	<b>8.5%</b>

**Power Table 5 Customer Energy Use By Category and By Feeder - December 2024**

Feeder	kWh/Connection		
	Residential	Commercial	Government
F01	317	975	8,607
F02	265	918	1,895
F03	312	2,201	536
F04	310	3,659	814
F05	220	3,421	562
<b>Total - Weno</b>	<b>285</b>	<b>2,235</b>	<b>2,483</b>
F10 - Tonoas	134	609	0

**Power Table 6 Power Distribution Statistics – FY2025: January 2024 – December 2024**

	Jan 24	Feb 24	Mar 24	Apr 24	May 24	Jun 24	Jul 24	Aug 24	Sep 24	Oct 24	Nov 24	Dec 24	FY2025 YTD
<b>Number of Outages (Frequency)</b>													
Forced - Generation	0	0	0	0	0	2	0	0	0	1	1	0	2
Planned - Generation	0	0	0	0	0	0	0	0	0	0	0	0	0
<b>Total Number of Outages (Gen)</b>	<b>0</b>	<b>0</b>	<b>0</b>	<b>0</b>	<b>0</b>	<b>2</b>	<b>0</b>	<b>0</b>	<b>0</b>	<b>1</b>	<b>1</b>	<b>0</b>	<b>0</b>
<b>Forced - Distribution</b>	<b>0</b>	<b>0</b>	<b>0</b>	<b>1</b>	<b>0</b>	<b>15</b>	<b>3</b>	<b>0</b>	<b>3</b>	<b>6</b>	<b>5</b>	<b>1</b>	<b>0</b>
Feeder 1	0	0	0	0	0	2	0	0	1	1	1	0	2
Feeder 2	0	0	0	1	0	7	1	0	1	2	1	1	4
Feeder 3	0	0	0	0	0	2	1	0	0	1	1	0	2
Feeder 4	0	0	0	0	0	2	0	0	1	1	1	0	2
Feeder 5	0	0	0	0	0	2	1	0	0	1	1	0	2
<b>Planned - Distribution</b>	<b>1</b>	<b>0</b>	<b>0</b>	<b>0</b>	<b>0</b>	<b>0</b>	<b>0</b>	<b>0</b>	<b>0</b>	<b>0</b>	<b>0</b>	<b>0</b>	<b>0</b>
Feeder 1	0	0	0	0	0	0	0	0	0	0	0	0	0
Feeder 2	1	0	0	0	0	0	0	0	0	0	0	0	0
Feeder 3	0	0	0	0	0	0	0	0	0	0	0	0	0
Feeder 4	0	0	0	0	0	0	0	0	0	0	0	0	0
Feeder 5	0	0	0	0	0	0	0	0	0	0	0	0	0
<b>Total Number of Outages (Dist)</b>	<b>1</b>	<b>0</b>	<b>0</b>	<b>1</b>	<b>0</b>	<b>15</b>	<b>3</b>	<b>0</b>	<b>3</b>	<b>6</b>	<b>5</b>	<b>1</b>	<b>12</b>

**Power Table 7 Power Outage Statistics – FY2025: January 2024 – December 2024**

	Jan 24	Feb 24	Mar 24	Apr 24	May 24	Jun 24	Jul 24	Aug 24	Sep 24	Oct 24	Nov 24	Dec 24	FY2025 YTD
<b>Duration of Outages (Hrs)</b>													
Forced - Generation	0.0	0.0	0.0	0.0	0.0	0.03	0.0	0.0	0.0	0.3	0.0	0.0	0.3
Planned - Generation	0.0	0.0	0.0	0.0	0.0	0.00	0.0	0.0	0.0	0.0	0.0	0.0	0.0
<b>Total Duration Gen Outage (Hrs)</b>	<b>0.0</b>	<b>0.0</b>	<b>0.0</b>	<b>0.0</b>	<b>0.0</b>	<b>0.03</b>	<b>0.0</b>	<b>0.0</b>	<b>0.0</b>	<b>0.3</b>	<b>0.0</b>	<b>0.0</b>	<b>0.3</b>
<b>Forced - Distribution</b>	<b>0.0</b>	<b>0.0</b>	<b>0.0</b>	<b>1.1</b>	<b>0.0</b>	<b>7.6</b>	<b>2.5</b>	<b>0.0</b>	<b>5.2</b>	<b>1.4</b>	<b>0.5</b>	<b>1.4</b>	<b>3.3</b>
Feeder 1	0.0	0.0	0.0	0.0	0.0	0.1	0.0	0.0	1.7	0.3	0.2	0.0	0.4
Feeder 2	0.0	0.0	0.0	1.1	0.0	6.9	0.7	0.0	1.3	0.3	0.2	1.4	1.9
Feeder 3	0.0	0.0	0.0	0.0	0.0	0.2	0.8	0.0	0.0	0.3	0.1	0.0	0.3
Feeder 4	0.0	0.0	0.0	0.0	0.0	0.2	0.0	0.0	2.2	0.3	0.1	0.0	0.3
Feeder 5	0.0	0.0	0.0	0.0	0.0	0.2	1.0	0.0	0.0	0.3	0.1	0.0	0.3
<b>Planned - Distribution</b>	<b>3.0</b>	<b>0.0</b>	<b>0.0</b>	<b>0.0</b>	<b>0.0</b>	<b>0.0</b>	<b>0.0</b>	<b>0.0</b>	<b>0.0</b>	<b>0.0</b>	<b>0.0</b>	<b>0.0</b>	<b>0.0</b>
Feeder 1	0.0	0.0	0.0	0.0	0.0	0.0	0.0	0.0	0.0	0.0	0.0	0.0	0.0
Feeder 2	3.0	0.0	0.0	0.0	0.0	0.0	0.0	0.0	0.0	0.0	0.0	0.0	0.0
Feeder 3	0.0	0.0	0.0	0.0	0.0	0.0	0.0	0.0	0.0	0.0	0.0	0.0	0.0
Feeder 4	0.0	0.0	0.0	0.0	0.0	0.0	0.0	0.0	0.0	0.0	0.0	0.0	0.0
Feeder 5	0.0	0.0	0.0	0.0	0.0	0.0	0.0	0.0	0.0	0.0	0.0	0.0	0.0
<b>Total Duration Dist Outage (Hrs)</b>	<b>3.0</b>	<b>0.0</b>	<b>0.0</b>	<b>1.1</b>	<b>0.0</b>	<b>7.6</b>	<b>2.5</b>	<b>0.0</b>	<b>5.2</b>	<b>1.4</b>	<b>0.5</b>	<b>1.4</b>	<b>3.3</b>

## Water Table 1 Water Production & Sales Data – FY2025: January 2024 – December 2024

COMPANY WIDE DATA	Jan-24	Feb-24	Mar-24	Apr-24	May-24	Jun-24	Jul-24	Aug-24	Sep-24	Oct-24	Nov-24	Dec-24	FY2025 YTD
<b>Water Production (Gallons)</b>													
WTP Output (from Pou reservoir)	400,779	738,986	429,161	530,425	711,953	573,197	902,030	1,161,520	690,238	979,306	615,658	1,016,888	2,611,852
Well Production (into supply)	19,250,500	15,121,700	16,944,300	14,702,800	17,135,600	17,917,300	16,621,400	18,724,200	16,976,800	16,535,400	16,583,200	17,898,900	51,017,500
<b>Volume into network</b>	<b>19,651,279</b>	<b>15,860,686</b>	<b>17,373,461</b>	<b>15,233,225</b>	<b>17,847,553</b>	<b>18,490,497</b>	<b>17,523,430</b>	<b>19,885,720</b>	<b>17,667,038</b>	<b>17,514,706</b>	<b>17,198,858</b>	<b>18,915,788</b>	<b>53,629,352</b>
<b>Water Volume Billed (Gallons)</b>	<b>Jan-24</b>	<b>Feb-24</b>	<b>Mar-24</b>	<b>Apr-24</b>	<b>May-24</b>	<b>Jun-24</b>	<b>Jul-24</b>	<b>Aug-24</b>	<b>Sep-24</b>	<b>Oct-24</b>	<b>Nov-24</b>	<b>Dec-24</b>	<b>FY2025 YTD</b>
Commercial	1,612,323	1,830,714	2,802,532	1,812,168	2,114,148	2,345,632	2,075,041	1,972,437	3,342,782	1,584,339	2,481,175	1,543,376	5,608,890
Government (excludes hospital)	1,034,180	1,055,110	948,850	801,460	684,840	1,023,750	939,520	1,160,540	453,020	1,400,420	1,592,530	812,710	3,805,660
Government Hospital	1,065,500	993,200	1,118,000	1,362,300	1,241,700	1,277,800	1,458,100	1,193,200	1,340,400	1,130,700	1,494,500	1,224,900	3,850,100
Residential	4,552,736	4,653,958	4,661,498	4,987,890	5,835,360	6,195,252	6,433,020	5,445,430	6,109,180	5,997,840	7,153,183	4,577,570	17,728,593
Water Delivery and Bunkering	313,000	307,000	390,000	234,000	176,000	109,000	121,500	161,500	126,500	130,700	133,000	115,000	1,727,700
<b>Total</b>	<b>8,577,739</b>	<b>8,839,982</b>	<b>9,920,880</b>	<b>9,197,818</b>	<b>10,052,048</b>	<b>10,951,434</b>	<b>11,027,181</b>	<b>9,933,107</b>	<b>11,371,882</b>	<b>10,243,999</b>	<b>12,854,388</b>	<b>8,273,556</b>	<b>31,371,943</b>
NRW	11,073,540	7,020,704	7,452,581	6,035,407	7,795,505	7,539,063	6,496,249	9,952,613	6,295,156	7,270,707	4,344,470	10,642,232	22,257,409
Volume	56.4%	44.3%	42.9%	39.6%	43.7%	40.8%	37.1%	50.0%	35.6%	41.5%	25.3%	56.3%	41.5%
<b>Production (Gallons)</b>	<b>Jan-24</b>	<b>Feb-24</b>	<b>Mar-24</b>	<b>Apr-24</b>	<b>May-24</b>	<b>Jun-24</b>	<b>Jul-24</b>	<b>Aug-24</b>	<b>Sep-24</b>	<b>Oct-24</b>	<b>Nov-24</b>	<b>Dec-24</b>	<b>FY2025 YTD</b>
WTP (production less storage difference)	400,779	738,986	429,161	530,425	711,953	573,197	902,030	1,161,520	690,238	979,306	615,658	1,016,888	2,611,852
Deep Wells	19,250,500	15,121,700	16,944,300	14,702,800	17,135,600	17,917,300	16,621,400	18,724,200	16,976,800	16,535,400	16,583,200	17,898,900	51,017,500
<b>Total Production</b>	<b>19,651,279</b>	<b>15,860,686</b>	<b>17,373,461</b>	<b>15,233,225</b>	<b>17,847,553</b>	<b>18,490,497</b>	<b>17,523,430</b>	<b>19,885,720</b>	<b>17,667,038</b>	<b>17,514,706</b>	<b>17,198,858</b>	<b>18,915,788</b>	<b>53,629,352</b>
<b>Volume Billed (Gallons)</b>	<b>Jan-24</b>	<b>Feb-24</b>	<b>Mar-24</b>	<b>Apr-24</b>	<b>May-24</b>	<b>Jun-24</b>	<b>Jul-24</b>	<b>Aug-24</b>	<b>Sep-24</b>	<b>Oct-24</b>	<b>Nov-24</b>	<b>Dec-24</b>	<b>FY2025 YTD</b>
Commercial	1,612,323	1,830,714	2,802,532	1,812,168	2,114,148	2,345,632	2,075,041	1,972,437	3,342,782	1,584,339	2,481,175	1,543,376	5,608,890
Government (excludes hospital)	1,034,180	1,055,110	948,850	801,460	684,840	1,023,750	939,520	1,160,540	453,020	1,400,420	1,592,530	812,710	3,805,660
Government Hospital	1,065,500	993,200	1,118,000	1,362,300	1,241,700	1,277,800	1,458,100	1,193,200	1,340,400	1,130,700	1,494,500	1,224,900	3,850,100
Residential	4,552,736	4,653,958	4,661,498	4,987,890	5,835,360	6,195,252	6,433,020	5,445,430	6,109,180	5,997,840	7,153,183	4,577,570	17,728,593
Water Delivery and Bunkering	313,000	307,000	390,000	234,000	176,000	109,000	121,500	161,500	126,500	130,700	133,000	115,000	1,727,700
<b>Total</b>	<b>8,577,739</b>	<b>8,839,982</b>	<b>9,920,880</b>	<b>9,197,818</b>	<b>10,052,048</b>	<b>10,951,434</b>	<b>11,027,181</b>	<b>9,933,107</b>	<b>11,371,882</b>	<b>10,243,999</b>	<b>12,854,388</b>	<b>8,273,556</b>	<b>31,371,943</b>
<b>NRW</b>	<b>Jan-24</b>	<b>Feb-24</b>	<b>Mar-24</b>	<b>Apr-24</b>	<b>May-24</b>	<b>Jun-24</b>	<b>Jul-24</b>	<b>Aug-24</b>	<b>Sep-24</b>	<b>Oct-24</b>	<b>Nov-24</b>	<b>Dec-24</b>	<b>FY2025 YTD</b>
Production	19,651,279	15,860,686	17,373,461	15,233,225	17,847,553	18,490,497	17,523,430	19,885,720	17,667,038	17,514,706	17,198,858	18,915,788	53,629,352
Billed Volume	8,577,739	8,839,982	9,920,880	9,197,818	10,052,048	10,951,434	11,027,181	9,933,107	11,371,882	10,243,999	12,854,388	8,273,556	31,371,943
NRW Volume	11,073,540	7,020,704	7,452,581	6,035,407	7,795,505	7,539,063	6,496,249	9,952,613	6,295,156	7,270,707	4,344,470	10,642,232	22,257,409
NRW Percentage	56.4%	44.3%	42.9%	39.6%	43.7%	40.8%	37.1%	50.0%	35.6%	41.5%	25.3%	56.3%	41.5%
<b>Invoiced Water Value (USD)</b>	<b>Jan-24</b>	<b>Feb-24</b>	<b>Mar-24</b>	<b>Apr-24</b>	<b>May-24</b>	<b>Jun-24</b>	<b>Jul-24</b>	<b>Aug-24</b>	<b>Sep-24</b>	<b>Oct-24</b>	<b>Nov-24</b>	<b>Dec-24</b>	<b>FY2025 YTD</b>
Water Delivery and Bunkering	6,167	5,737	7,611	5,571	3,427	1,876	3,862	4,230	4,001	2,945	2,934	3,794	9,673
Commercial	8,773	10,098	15,726	9,586	11,785	12,274	10,928	10,309	16,901	8,255	13,135	8,789	30,179
Government (includes hospital)	10,686	10,382	10,492	11,084	9,962	11,689	12,366	12,226	11,713	13,185	15,932	10,113	39,230
Residential	11,355	11,449	10,948	12,581	14,828	16,021	16,611	14,132	14,671	15,592	18,772	11,745	46,109
<b>Total</b>	<b>36,980</b>	<b>37,666</b>	<b>44,778</b>	<b>38,822</b>	<b>40,002</b>	<b>41,860</b>	<b>43,767</b>	<b>40,898</b>	<b>47,286</b>	<b>39,978</b>	<b>50,772</b>	<b>34,441</b>	<b>125,190</b>
<b>Sewer Charges (USD)</b>	<b>Jan-24</b>	<b>Feb-24</b>	<b>Mar-24</b>	<b>Apr-24</b>	<b>May-24</b>	<b>Jun-24</b>	<b>Jul-24</b>	<b>Aug-24</b>	<b>Sep-24</b>	<b>Oct-24</b>	<b>Nov-24</b>	<b>Dec-24</b>	<b>FY2025 YTD</b>
Commercial	3,164	3,342	6,221	3,440	4,616	4,454	4,122	3,855	6,892	3,029	5,127	3,313	11,469
Commercial - w/o water	2,809	2,973	2,973	2,973	2,973	2,973	2,973	2,973	2,973	2,973	2,973	2,973	8,918
Government	5,320	5,112	5,088	5,455	4,915	5,805	6,093	5,982	5,744	6,492	7,832	4,919	19,244
Residential	966	230	949	1,168	1,208	1,537	1,435	1,293	1,357	1,390	1,731	996	4,118
Residential w/o water	2,590	3,177	3,201	2,540	2,550	2,570	2,580	2,440	2,727	2,573	2,611	2,650	7,834
<b>Total</b>	<b>14,850</b>	<b>14,834</b>	<b>18,432</b>	<b>15,575</b>	<b>16,261</b>	<b>17,339</b>	<b>17,203</b>	<b>16,544</b>	<b>19,692</b>	<b>16,458</b>	<b>20,274</b>	<b>14,851</b>	<b>51,583</b>

## Water Table 2    Water/Sewer Connection Data – FY2025: January 2024 – December 2024

Connection Information	Jan-24	Feb-24	Mar-24	Apr-24	May-24	Jun-24	Jul-24	Aug-24	Sep-24	Oct-24	Nov-24	Dec-24	FY2025 YTD
<b>Water Connection Data (Total Active)</b>	<b>546</b>	<b>546</b>	<b>548</b>	<b>556</b>	<b>559</b>	<b>562</b>	<b>568</b>	<b>570</b>	<b>572</b>	<b>574</b>	<b>576</b>	<b>578</b>	<b>574</b>
Commercial - Billed	103	102	102	103	102	102	104	105	107	107	106	108	107
Commercial - Disconnected	0	0	0	0	0	0	0	0	0	0	0	0	0
Commercial - Meter Pulled	0	0	0	0	0	0	0	0	0	0	0	0	0
<b>Commercial Avge Consumption - Gall/conn/mth</b>	<b>15,654</b>	<b>17,948</b>	<b>27,476</b>	<b>17,594</b>	<b>20,727</b>	<b>22,996</b>	<b>19,952</b>	<b>18,785</b>	<b>31,241</b>	<b>14,807</b>	<b>23,407</b>	<b>14,291</b>	<b>17,502</b>
Government - Billed	29	30	30	30	30	30	31	31	31	31	31	30	31
Government - Disconnected	0	0	0	0	0	0	0	0	0	0	0	0	0
Government - Meter Pulled	0	0	0	0	0	0	0	0	0	0	0	0	0
<b>Government Avge Consumption - Gall/conn/mth</b>	<b>35,661</b>	<b>35,170</b>	<b>31,628</b>	<b>26,715</b>	<b>22,828</b>	<b>34,125</b>	<b>30,307</b>	<b>37,437</b>	<b>14,614</b>	<b>45,175</b>	<b>51,372</b>	<b>27,090</b>	<b>41,212</b>
Hospital - Billed	1	1	1	1	1	1	1	1	1	1	1	1	1
Hospital - Disconnected	0	0	0	0	0	0	0	0	0	0	0	0	0
Hospital - Meter Pulled	0	0	0	0	0	0	0	0	0	0	0	0	0
<b>Hospital Avge Consumption - Gall/conn/mth</b>	<b>1,065,500</b>	<b>993,200</b>	<b>1,118,000</b>	<b>1,362,300</b>	<b>1,241,700</b>	<b>1,277,800</b>	<b>1,458,100</b>	<b>1,193,200</b>	<b>1,340,400</b>	<b>1,130,700</b>	<b>1,494,500</b>	<b>1,224,900</b>	<b>1,283,367</b>
Residential - Billed	413	413	415	422	426	429	432	433	433	435	438	439	435
Residential - Disconnected	0	0	0	1	0	0	0	0	0	0	0	1	0
Residential - Meter Pulled	2	1	2	1	1	1	1	1	1	1	1	2	1
<b>Residential Avge Consumption - Gall/conn/mth</b>	<b>11,024</b>	<b>11,269</b>	<b>11,233</b>	<b>11,820</b>	<b>13,698</b>	<b>14,441</b>	<b>14,891</b>	<b>12,576</b>	<b>14,109</b>	<b>13,788</b>	<b>16,331</b>	<b>10,427</b>	<b>13,516</b>
<b>Sewer Connection Data (Total Registered)</b>	<b>629</b>	<b>610</b>	<b>609</b>	<b>618</b>	<b>620</b>	<b>618</b>	<b>627</b>	<b>609</b>	<b>604</b>	<b>620</b>	<b>614</b>	<b>624</b>	<b>620</b>
Commercial Billed	69	67	67	68	67	69	69	70	67	69	67	71	69
Commercial Billed w/o water	58	50	50	50	50	50	50	50	50	50	50	50	50
Government Billed	27	24	24	25	27	26	28	25	23	28	26	21	28
Residential Billed	241	239	240	247	246	241	247	244	230	239	234	242	239
Residential Billed w/o water	234	230	228	228	230	232	233	220	234	234	237	240	234
<b>STP Inflow (MG/month)</b>	<b>19.1</b>	<b>14.9</b>	<b>11.9</b>	<b>15.8</b>	<b>20.3</b>	<b>25.1</b>	<b>26.5</b>	<b>24.5</b>	<b>25.0</b>	<b>20.2</b>	<b>15.8</b>	<b>26.6</b>	<b>63</b>

**Water Table 3 Zonal Water Use Statistics – December 2024 & FY2025**

ZONAL NRW - December 2024					ZONAL NRW - FY2025				
Zone	Production	Sales	NRW		Zone	Production	Sales	NRW	
	Gallons	Gallons	Gallons	%		Gallons	Gallons	Gallons	%
1	200,000	104,250	95,750	48%	1	600,000	430,340	169,660	28%
2	13,535,188	5,295,396	8,239,792	61%	2	38,039,452	21,032,633	17,006,819	45%
3	5,000	0	5,000	100%	3	15,000	0	15,000	100%
4	918,200	283,630	634,570	69%	4	2,416,700	1,039,600	1,377,100	57%
5	18,100	0	18,100	0%*	5	165,300	0	165,300	-
6	2,964,100	1,970,080	994,020	34%	6	8,518,500	6,618,990	1,899,510	22%
7	200,000	340,870	-140,870	-70%	7	600,000	811,750	-211,750	-35%
8	1,075,200	164,330	910,870	85%	8	3,274,400	1,059,930	2,214,470	68%
Water Delivery/Bunker		115,000			Water Delivery/Bunker		378,700		
<b>Total</b>	<b>18,915,788</b>	<b>8,273,556</b>	<b>10,642,232</b>	<b>56.3%</b>	<b>Total</b>	<b>53,629,352</b>	<b>31,371,943</b>	<b>22,257,409</b>	<b>41.5%</b>
ZONAL WATER CONSUMPTION - December 2024					ZONAL WATER CONSUMPTION - FY2025				
Zone	Avge Use - Gallons/Connection/Month				Zone	Avge Use -Gallons/Connection			
	Commercial	Government	Hospital	Residential		Commercial	Government	Hospital	Residential
1	0	95,250	-	3,000	1	0	0	-	0
2	14,622	25,367	-	9,522	2	52,738	0	-	38,864
3	-	-	-	0	3	-	-	-	0
4	-	-	-	15,757	4	-	-	-	57,756
5	-	-	-	0	5	-	-	-	-
6	9,060	-	1,224,900	578	6	43,645	-	3,850,100	47,337
7	-	-	-	22,651	7	-	2	-	53,963
8	-	13,550	-	6,899	8	-	140,256	-	25,618
<b>Total</b>	<b>14,807</b>	<b>45,175</b>	<b>1,130,700</b>	<b>13,788</b>	<b>Total</b>	<b>17,311</b>	<b>42,285</b>	<b>1,283,367</b>	<b>13,461</b>
<p><b>Note *</b> - production in zone 5 is used solely for water tankering so NRW is shown as zero;  The zone 5 production is included in total production and Water Delivery &amp; Bunkering sales</p>									

### Work Order Summary – End December 2024

Work Order Type	WO at Start of Period	New	Printed	Dispatched	Completed	WO at End of Period
INTERNAL MAINTENANCE	20	37	53	0	43	14
INTERNAL POWER	0	0	0	0	0	0
INTERNAL SEWER	1	0	0	0	1	0
INTERNAL WATER	0	0	0	0	0	0
POWER	6	9	10	0	4	11
REVENUE	5	32	34	1	21	16
SEWER	9	15	15	0	14	10
SURVEY	1	0	1	0	1	0
WATER	26	62	68	0	43	45
<b>TOTAL ALL WORK ORDERS</b>	<b>68</b>	<b>155</b>	<b>181</b>	<b>1</b>	<b>127</b>	<b>96</b>

Work Order Type	WO Outstanding at Start	New WO	Completed as % of Outstanding and New	WO Outstanding At End
INTERNAL MAINTENANCE	29.4%	23.9%	-	14.6%
INTERNAL POWER	0.0%	0.0%	-	0.0%
INTERNAL SEWER	1.5%	0.0%	-	0.0%
INTERNAL WATER	0.0%	0.0%	-	0.0%
POWER	8.8%	5.8%	66.7%	11.5%
REVENUE	7.4%	20.6%	91.9%	16.7%
SEWER	13.2%	9.7%	62.5%	10.4%
SURVEY	1.5%	0.0%	100.0%	0.0%
WATER	38.2%	40.0%	77.3%	46.9%
<b>TOTAL ALL WORK ORDERS</b>			<b>81.2%</b>	



## **Administration Table 1 H&S Statistics – December 2024**

## **Administration Table 2 Attendance Summary – December 2024 & FY 2025**

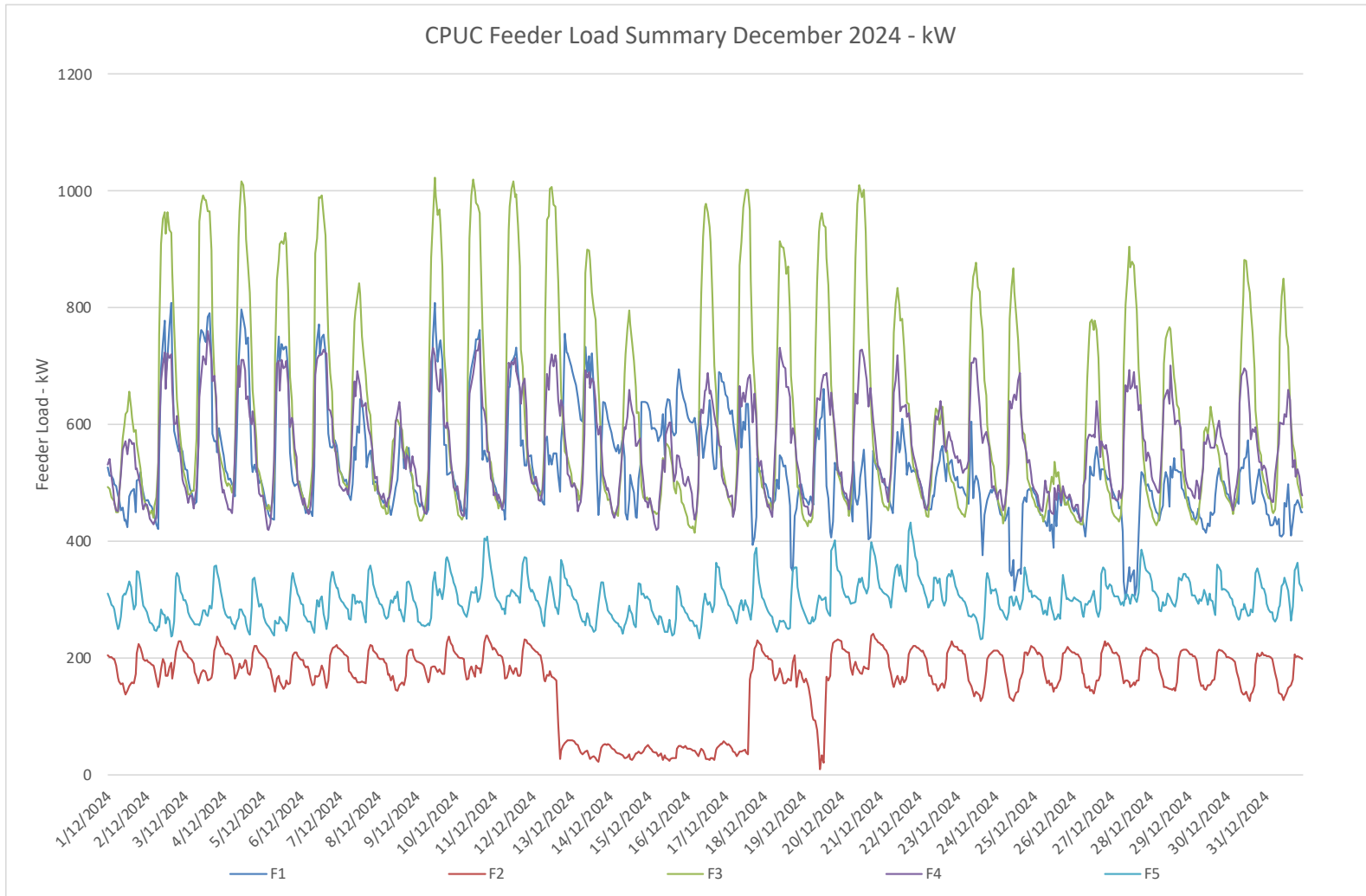
Data for Administration tables 1 and 2 not available for December 2024 – HR system upgrade/transition underway.



## CAPEX Table 1 Capex Summary Sheet – December 2024

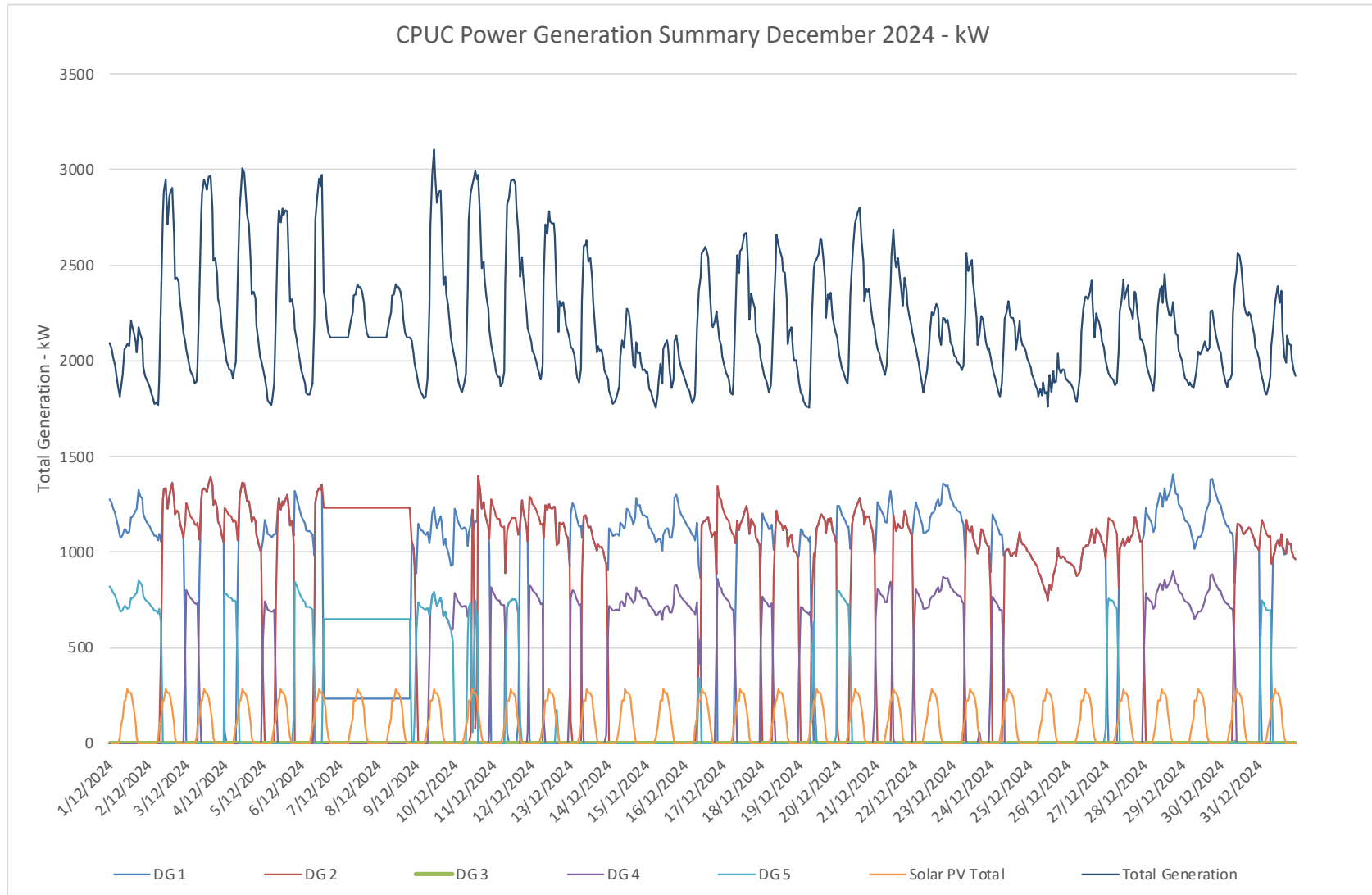
Chuuk Public Utility Corporation Capex Summary Sheet as of December 31, 2024								
	A	B	C	D (B-C)	E (A-B)	F	(A+A+F)	G (F-C)
	Total Value	Commitment	Expended	Commitment Balance	Uncommitted	Cash Drawdown	OIA / ADB Balance	Cash Balance
FY 2016 Tonoas Water System - D16AF00017-00010	750,000	380,883	380,883	0	369,117	415,000	335,000	34,117
FY 2020 ADB CWSSP - G6026 PRF	5,000,000	4,715,336	4,715,336	0	284,664	4,517,891	482,109	-197,445
FY 2022 ADB CWSSP - G0767	12,760,000	4,072,961	4,072,961	0	8,687,039	3,633,196	9,126,804	-439,765
FY 2023 Professional management D23AF00040-00	206,100	206,100	206,100	0	0	206,100	0	0
SPC- DFAT G23-418GRA	31,200	31,200	15,330	15,870	0	24,557	6,643	9,227
<b>Total</b>	<b>18,747,300</b>	<b>9,406,480</b>	<b>9,390,610</b>	<b>15,870</b>	<b>9,340,820</b>	<b>8,796,744</b>	<b>9,950,556</b>	<b>-593,866</b>

## Graph Showing Feeder Loads in kW – December 2024



**Note:** The graph shows that some of the load was transferred from Feeder 2 to Feeder 1 from the 13<sup>th</sup> to the 18<sup>th</sup> of December.

## Graph Showing Generation Output in kW - December 2024



**Note:** The Scada record was not available for a period of just over 48hours the 7<sup>th</sup> and 8<sup>th</sup> December – the data has been interpolated on a straight line basis for this period.