

## CHUUK PUBLIC UTILITY CORPORATION



### MONTHLY REPORT:

**FY2025 – November 2024**



**Issued: 16 January 2024**

## Table of Contents

EXECUTIVE SUMMARY .....	3
1 FINANCIAL PERFORMANCE GRAPHS .....	4
2 POWER GENERATION & DISTRIBUTION PERFORMANCE GRAPHS .....	6
3 WATER PERFORMANCE GRAPHS .....	8
Financial Table 1 P & L Statement – FY2025: December 2023 – November 2024 .....	9
Financial Table 2 Cash Flow and A/R Report – FY2025: December 2023 – November 2024 .....	10
Financial Table 3 Power Sales Report – FY2025: December 2023 – November 2024 .....	11
Financial Table 4 Water Sales Report – FY2025: December 2023 – November 2024 .....	12
Financial Table 5 Key Performance Indicators – FY2025: December 2023 – November 2024 .....	13
Financial Table 6 CPUC Performance Against Budget FY 2025 .....	14
Power Table 1 Power Operation Indicators – FY2025: December 2023 – November 2025 .....	15
Power Table 2 Power Generation Statistics – FY2025: December 2023 – November 2024 .....	16
Power Table 3 Fuel & Lube Oil Statistics - FY2025: December 2023 – November 2024 .....	17
Power Table 4 Distribution Feeder Statistics - FY2025: December 2023 – November 2024 .....	18
Power Table 5 Customer Energy Use By Category and By Feeder – November 2024 .....	18
Power Table 6 Power Distribution Statistics – FY2025: December 2023 – November 2024 .....	19
Power Table 7 Power Outage Statistics – FY2025: December 2023 – November 2024 .....	19
Water Table 1 Water Production & Sales Data – FY2025: December 2023 – November 2024 .....	20
Water Table 2 Water/Sewer Connection Data – FY2025: December 2023 – November 2024 .....	21
Water Table 3 Zonal Water Use Statistics – November 2024 & FY2025 .....	22
Work Order Summary – End November 2024 .....	23
Administration Table 1 H&S Statistics – November 2024 .....	24
Administration Table 2 Attendance Summary – November 2024 & FY 2025 .....	24
CAPEX Table 1 Capex Summary Sheet – November 2024 .....	25
Graph Showing Feeder Loads in kW – November 2024 .....	26
Graph Showing Generation Output in kW – November 2024 .....	27

**EXECUTIVE SUMMARY**

**SUMMARY OF KEY STATISTICS**

	Nov 24	FY2025	US\$/kWh Sold		US\$/kWh Generated	
	US\$	US\$	Nov 24	FY2025	Nov-24	FY2025
Revenue	801,912	1,599,670	0.531	0.526	0.505	0.497
Variable Costs	373,452	771,440	0.247	0.254	0.235	0.240
Fixed Costs	224,007	485,974	0.148	0.160	0.141	0.151
Total Expenses	597,459	1,257,414	0.395	0.414	0.376	0.391
Operating result	204,454	342,256	0.135	0.113	0.129	0.106
Power Generation - Weno	1,589,147	3,215,942				
Diesel	1,533,772	3,093,796				
Solar	55,375	122,146				
Solar PV as % of Total Generation	3.5%	3.8%				
Avoided Cost of Fuel - US\$	12,362	26,773				
Tons of CO2 Avoided	37.1	80.4				
Power Purchase (kWh) - Tonoas	37,360	74,000				
Government Sales	247,913	524,063	<b>Feeder</b>	<b>Connections</b>	<b>Nov-24</b>	<b>FY2025</b>
Commercial Sales	670,205	1,313,509	F1	488	341,242	694,630
Residential Sales	495,558	997,124	F2	540	127,284	261,175
Intercompany Sales	65,939	136,304	F3	482	435,110	859,060
Sales Accrual	0	0	F4	446	352,495	675,243
Tonoas Sales	31,751	67,605	F5	536	170,549	338,996
<b>Total Sales - kWh</b>	<b>1,511,367</b>	<b>3,038,604</b>	Tonoas	330	31,751	67,605
Power Loss - Weno	6.9%	7.6%	<b>Total</b>	<b>2,821</b>	<b>1,458,431</b>	<b>2,896,708</b>
Power Loss - Tonoas	15.0%	8.6%	* excludes streetlights & CPUC internal Sales			
<b>Power Loss - Whole company</b>	<b>7.1%</b>	<b>7.64%</b>				
Operating ratio	0.75	0.79				
Water Produced - Gallons	17,198,858	34,713,564				
Water Sold - Gallons	12,854,388	23,098,387				
Non Revenue Water	25.3%	33.5%				

Daily generated output in November was 52,972 kWh/day an increase of 0.9% on October. Average daily sales were 49,321 kWh/day – 2.5% higher than October. Total power loss in Weno was 6.9% in November (7.6% FY2025). Tonoas power loss in November was 15.0% (8.6% FY2025). Replacement of oversized transformers on Tonoas is ongoing and will contribute to reducing distribution losses there. Whole company losses for November were 7.1% (7.6% FY2025).

The split of power users for Weno sales in November was as follows:

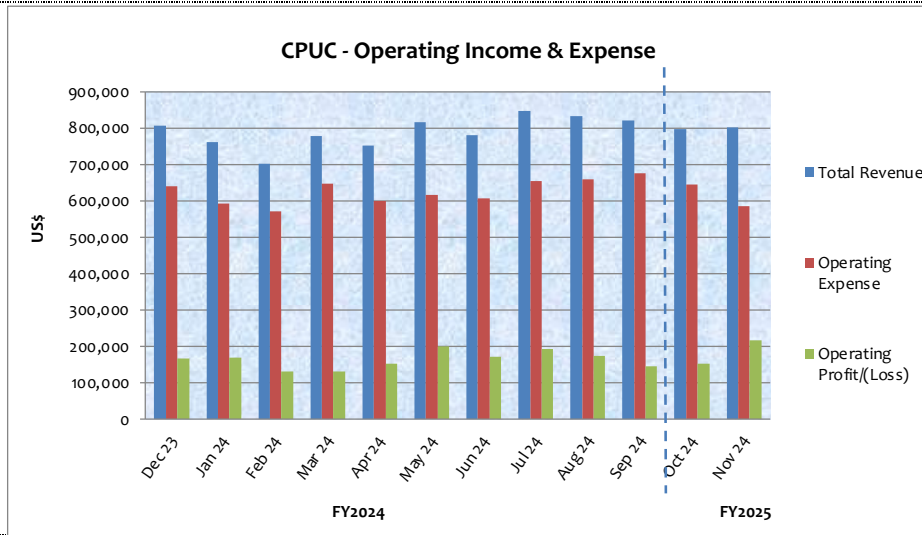
Government –18.7%; Commercial – 48.1%; Residential – 33.5%; Intercompany – 4.5%; Accrual - 0.0%;

Solar PV generation in November 2024 was 55,375 kWh or 3.5% of total generation. The avoided cost of fuel is US\$12,362 and the amount of Carbon Dioxide avoided was 37.1 tons. The RE generation in November remains less than full capacity due to the removal of the 65 kWp airport system for roof renewal – the sooner this can be replaced the better for CPUC.

The NRW in October was 25.3% (33.5% FY2025) this very low result may be as a result of accrual assumptions and will be reviewed in December reporting.

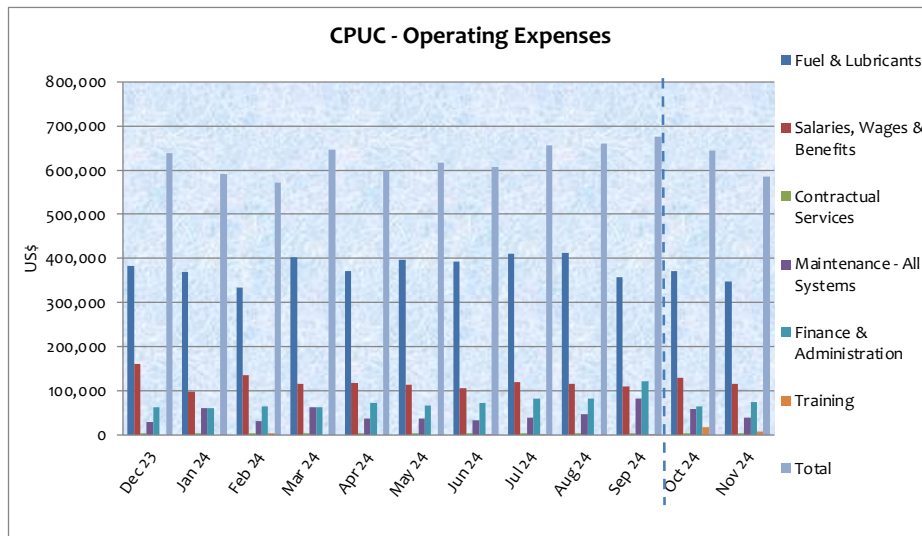
The operating result for November 2024 is US\$204,454 before interest and depreciation (US\$342,256 FY2025). This is better than budget by US\$91,243. The gross operating ratio for November was 0.75 (0.79 FY2025 YTD).

# 1 FINANCIAL PERFORMANCE GRAPHS

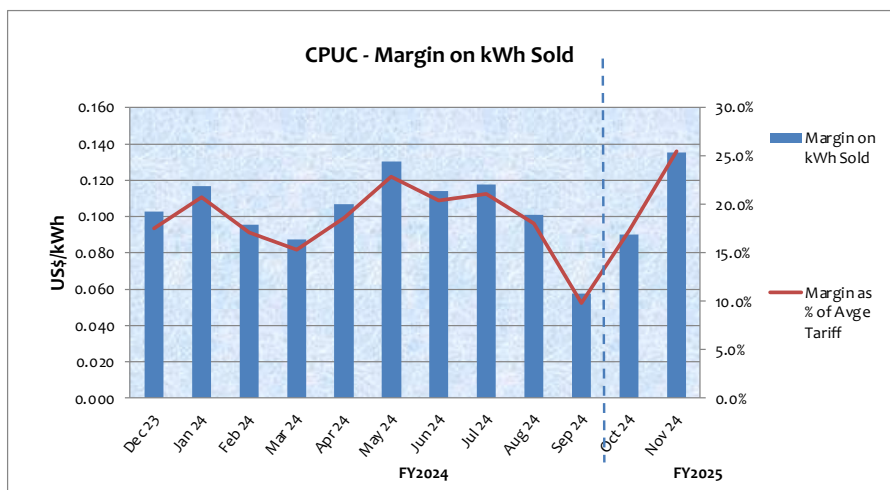


## 1.1 Key Points:

Operating income for November 2024  
 US\$204,454  
 Operating ratio: 0.75  
 FY2025 - 0.79

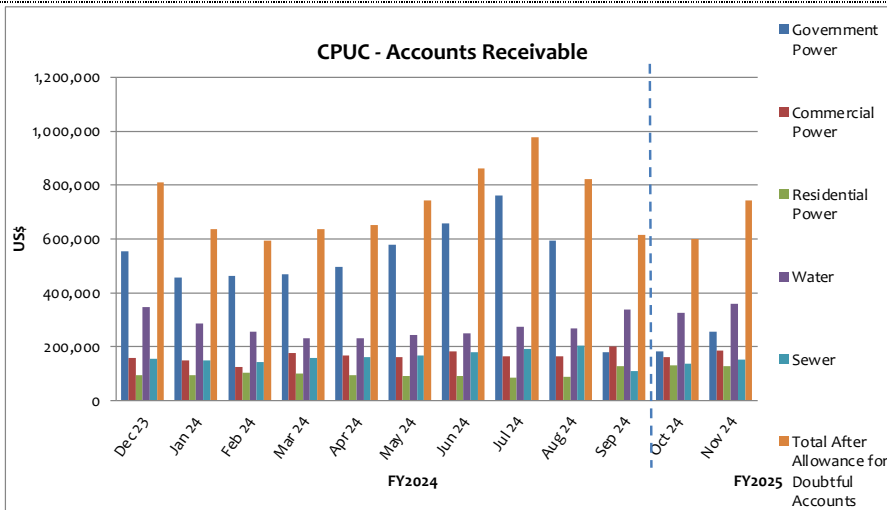


## 1.2 Key Points:

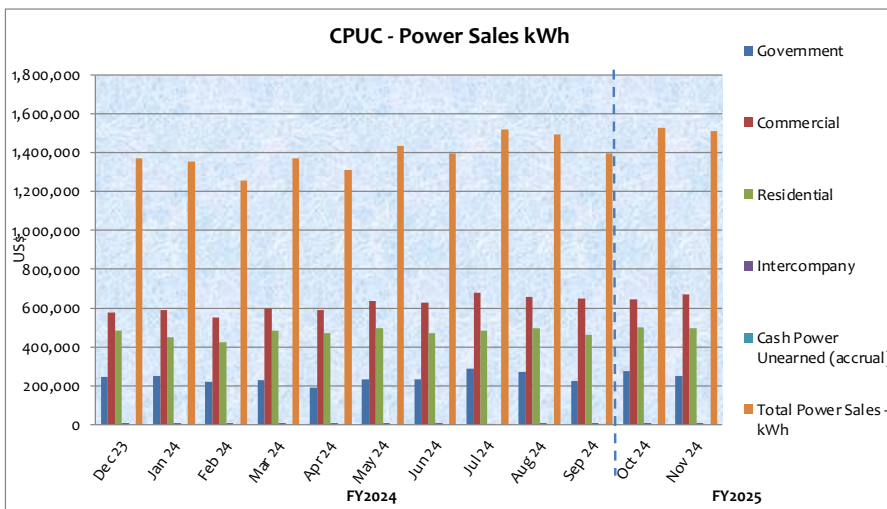


## 1.3 Key Points:

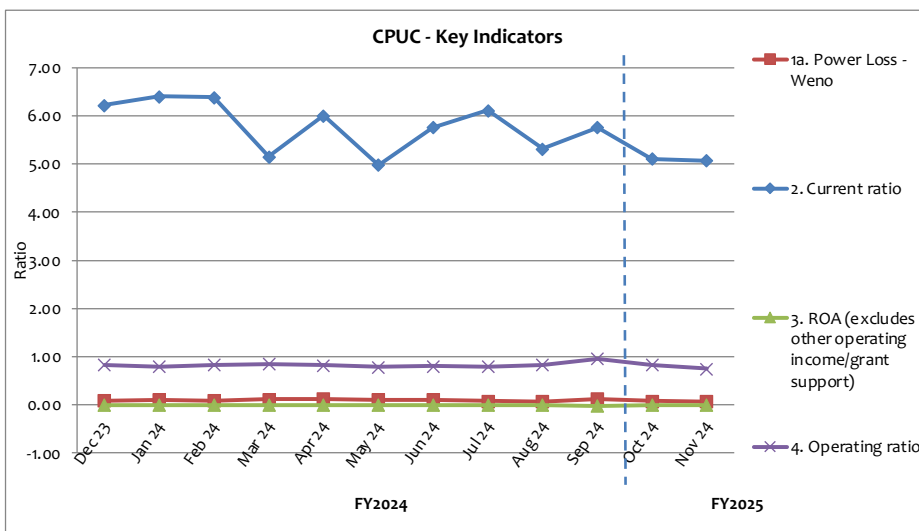
Margin on kWh sold  
 US\$0.135/kWh  
 (US\$0.113/kWh YTD)  
 Nov 24 - 25.5%  
 YTD 21.1%



#### 1.4 Key Points:

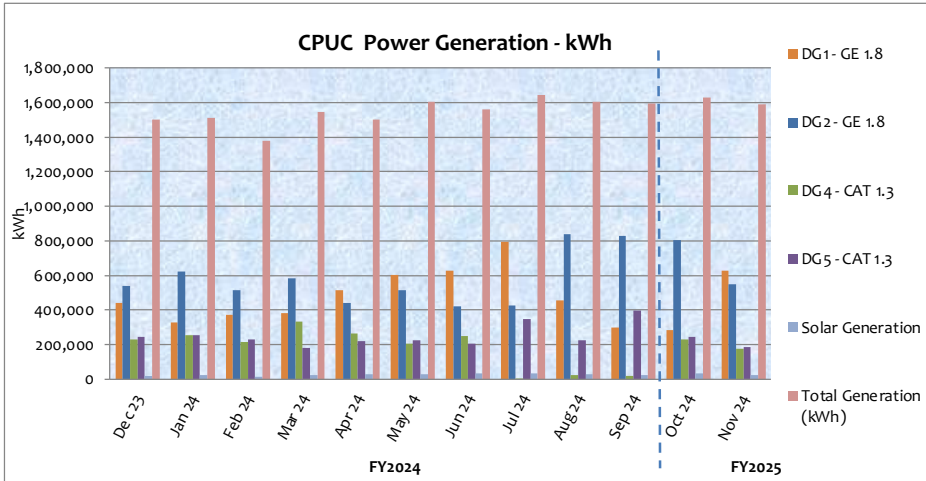


#### 1.5 Key Points:

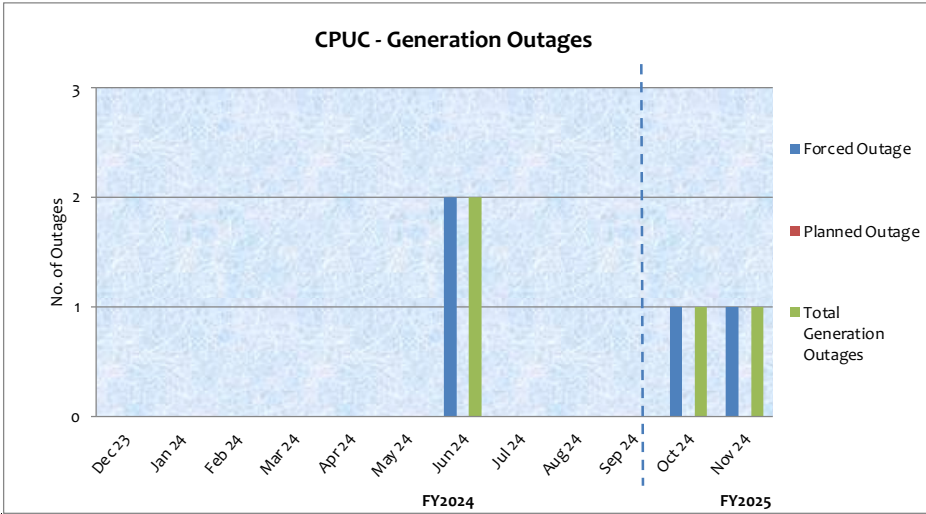


#### 1.6 Key Points:

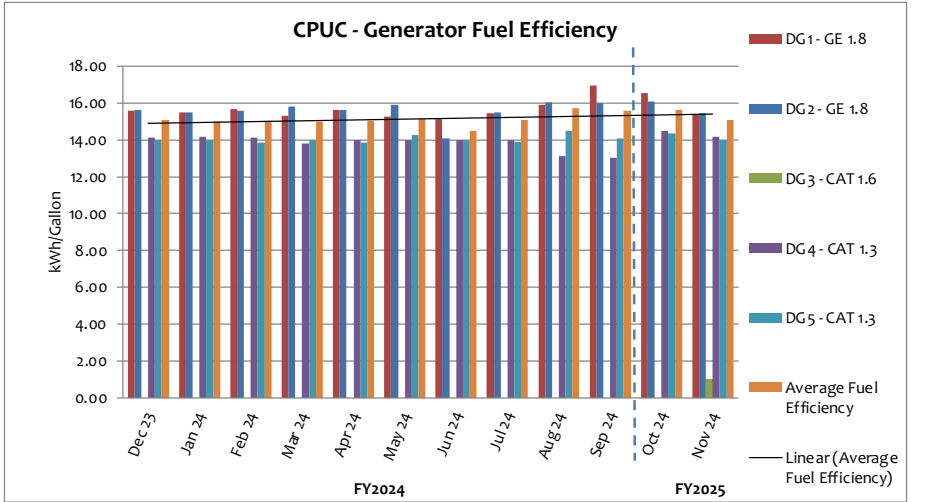
## 2 POWER GENERATION & DISTRIBUTION PERFORMANCE GRAPHS



### 2.1 Key Points:



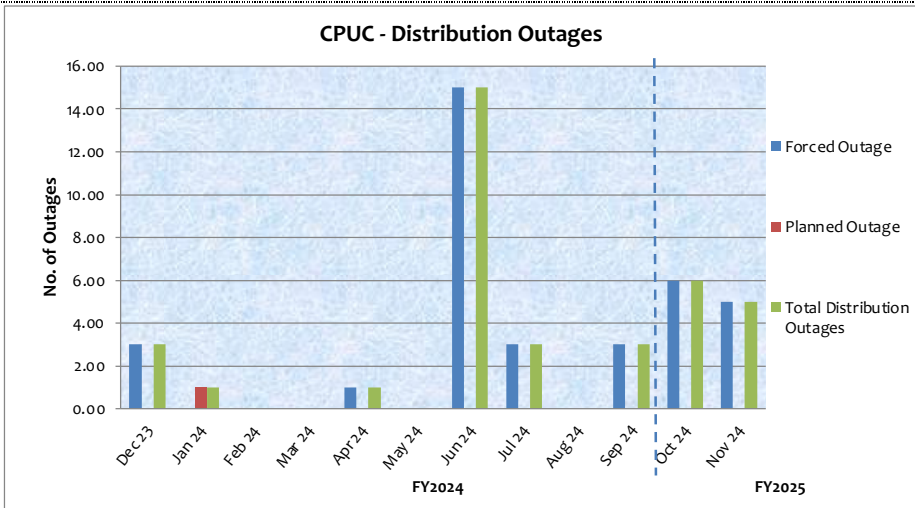
### 2.2 Key Points:



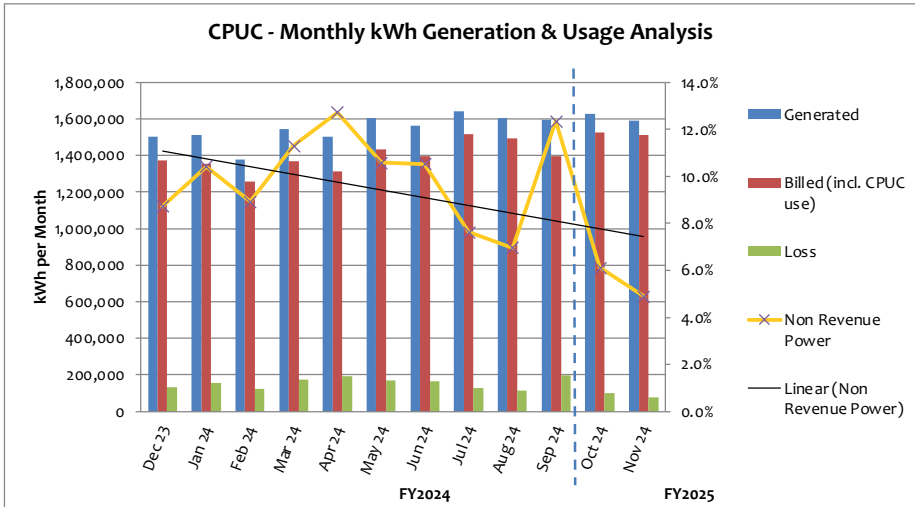
### 2.3 Key Points:

Avge fuel efficiency  
Nov 24– 15.08  
kWh/gall

YTD – 15.35kWh/gall

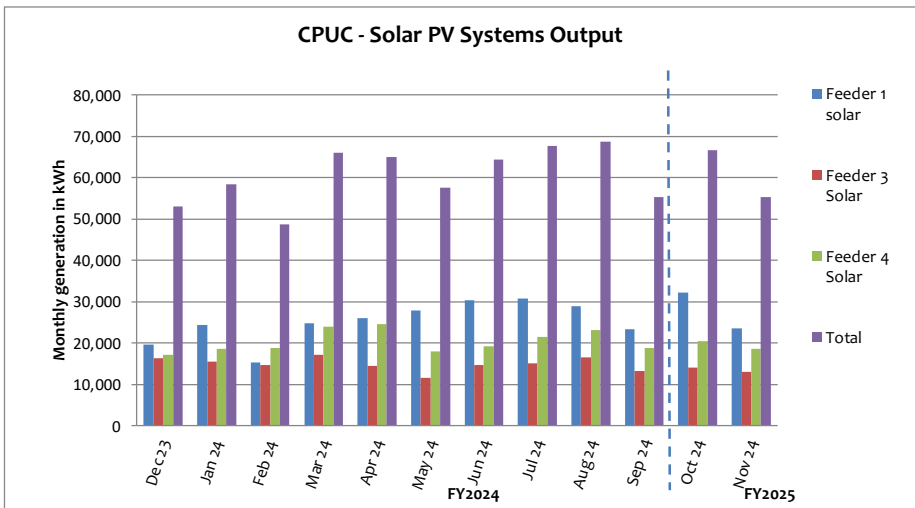


#### 2.4 Key Points



#### 2.5 Key Points:

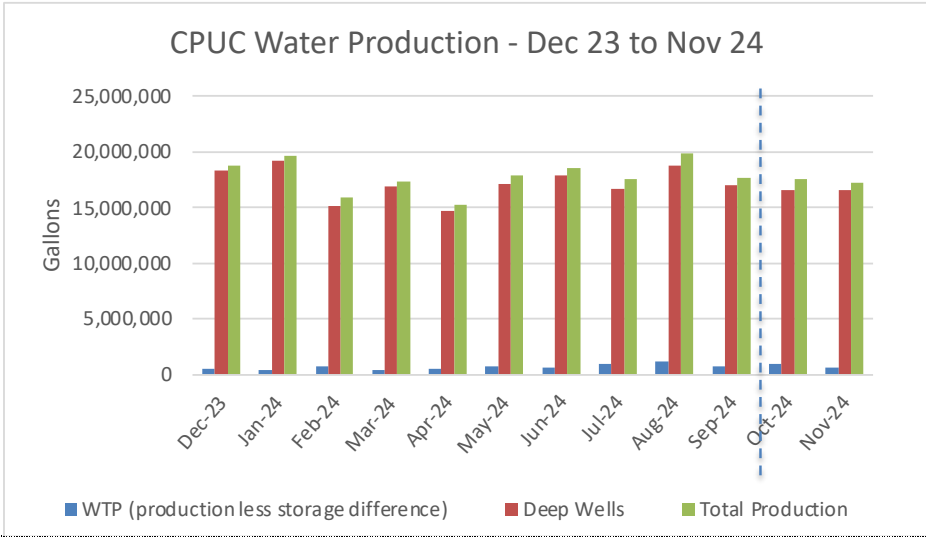
Power loss for November:  
 Weno – 6.9%  
 Tonoas – 15.0%  
 Whole company – 7.1%  
 (7.6% FY2025)



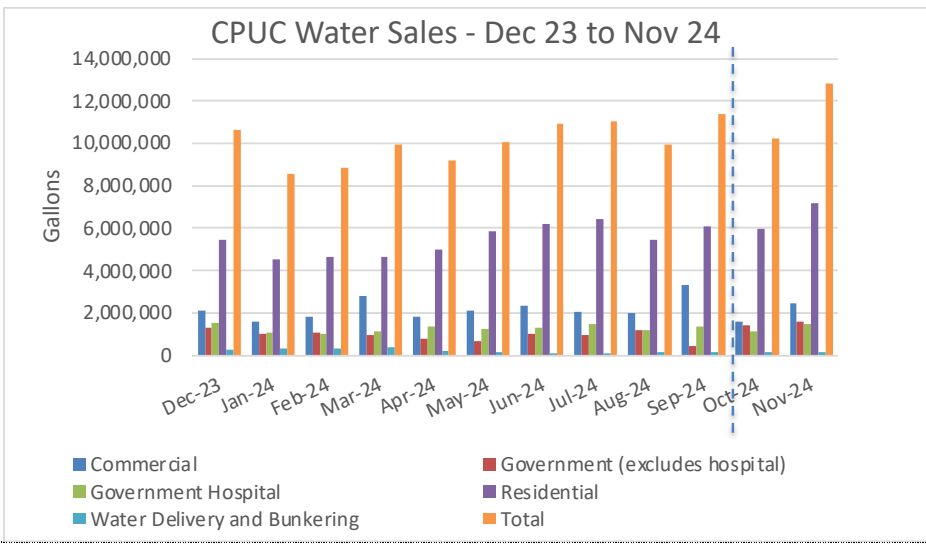
#### 2.6 Key Points:

Solar PV: 3.5% of total generation in October;  
 Avoided cost of fuel – US\$12,362.  
 Tons of CO2 avoided 37.1;  
 The airport terminal roof solar system is still down for roof renewal – the impact of this is around 10% of solar generation

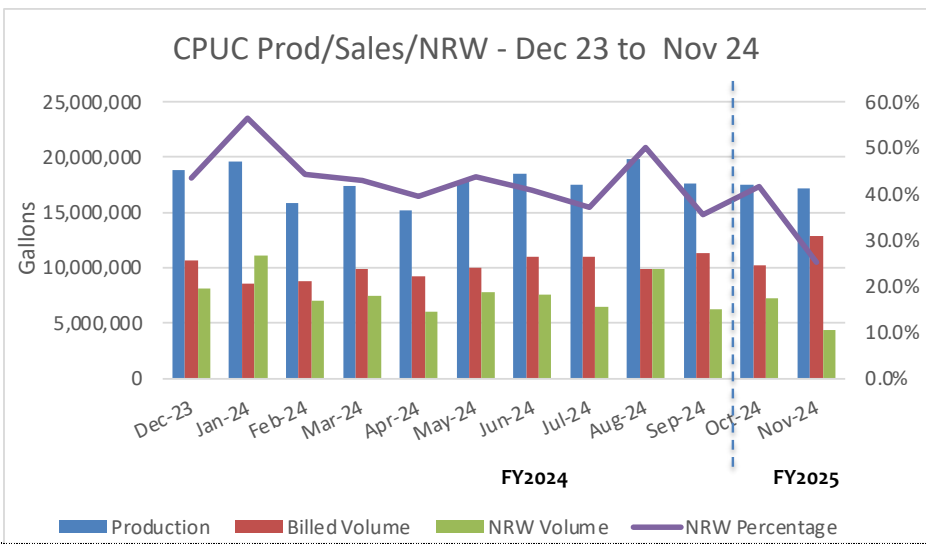
### 3 WATER PERFORMANCE GRAPHS



**1 Key Points:**  
 28 wells are capable of production; system in process of being optimized to balance production with demand;



**Key Points:**



**Key Points:**



## Financial Table1 P & L Statement – FY2025: December 2023 – November 2024

Revenue - US\$	Dec 23	Jan 24	Feb 24	Mar 24	Apr 24	May 24	Jun 24	Jul 24	Aug 24	Sep 24	Oct 24	Nov 24	FY2025 YTD
<b>Operating revenue:</b>													
a. Power Sales	735,574	706,054	648,287	706,769	686,538	748,816	720,874	777,742	768,007	706,051	737,170	724,116	1,461,286
b. Water Sales	45,821	36,147	37,234	48,467	39,763	38,801	33,135	43,218	35,534	42,057	38,856	50,154	89,011
c. Sewer Sales	18,359	15,440	12,400	18,499	15,536	14,789	17,197	17,530	21,175	23,766	15,992	20,776	36,768
d. Other operating revenue	6,716	4,561	5,103	5,046	10,641	13,923	8,640	9,196	8,980	49,304	5,740	6,865	12,605
<b>Revenue - Total</b>	<b>806,469</b>	<b>762,203</b>	<b>703,025</b>	<b>778,781</b>	<b>752,477</b>	<b>816,330</b>	<b>779,846</b>	<b>847,686</b>	<b>833,697</b>	<b>821,178</b>	<b>797,758</b>	<b>801,912</b>	<b>1,599,670</b>
<b>Expenses - US\$</b>													
Fuel & Lubricants	383,818	369,924	334,670	403,214	371,104	395,997	392,657	410,765	412,826	357,887	371,612	348,072	719,683
Salaries, Wages & Benefits	160,485	97,975	134,752	115,325	117,164	113,945	106,019	118,690	115,185	109,293	128,330	115,166	243,497
Contractual Services	3,607	3,276	3,007	3,328	3,199	3,058	3,064	3,120	3,121	3,128	3,274	2,953	6,227
O&M - Power Generation	7,527	13,158	8,415	30,099	10,756	11,069	14,234	14,394	20,936	50,163	20,122	11,014	31,136
O&M - Power Distribution	8,860	5,926	7,506	3,236	10,142	5,035	1,890	3,616	5,602	10,766	11,896	2,743	14,640
O&M - Water	5,737	20,744	2,785	7,740	4,829	4,821	4,809	4,706	6,423	14,208	7,799	11,503	19,302
O&M - Sewer	0	2,547	662	731	0	4,389	72	1,689	2,564	0	4,472	968	5,440
Finance & Administration Overheads	45,002	43,009	49,566	47,045	56,193	48,818	52,271	63,384	63,688	104,007	46,384	56,666	103,050
Vehicle & Eq. Fuel	6,898	18,395	11,770	19,848	10,753	10,578	11,660	14,680	11,236	7,072	14,880	12,590	27,470
CPUC Power Usage (incl. in O&M from Oct 15)	16,949	16,410	15,582	15,621	15,102	18,317	19,135	18,863	17,514	18,171	17,594	16,485	34,079
Tonoas Power Usage	12,209	11,612	11,040	12,400	11,925	12,354	11,969	11,964	12,780	11,772	12,480	12,743	25,224
Tonoas Distribution Expense	169	338	170	0	338	0	169	169	169	169	0	169	169
Support to Energy Office	0	0	0	0	0	0	0	0	0	0	3,295	0	3,295
Training	0	0	3,020	0	0	0	1,833	1,400	0	612	17,817	6,387	24,204
Board Expenses	13,930	441	62	510	780	1,322	815	1,584	11,073	53,529	0	0	0
<b>Expense - Total</b>	<b>665,191</b>	<b>603,755</b>	<b>583,006</b>	<b>659,097</b>	<b>612,286</b>	<b>629,703</b>	<b>620,596</b>	<b>669,026</b>	<b>683,117</b>	<b>740,778</b>	<b>659,955</b>	<b>597,459</b>	<b>1,257,414</b>
<b>Operating Income/(Loss)</b>	<b>141,278</b>	<b>158,447</b>	<b>120,019</b>	<b>119,684</b>	<b>140,190</b>	<b>186,627</b>	<b>159,250</b>	<b>178,660</b>	<b>150,579</b>	<b>80,400</b>	<b>137,803</b>	<b>204,454</b>	<b>342,256</b>
<b>Non-Cash Expenses - US\$</b>													
Depreciation	149,142	149,142	149,142	149,142	149,142	149,142	149,142	149,142	149,142	280,630	164,092	164,092	328,185
Interest Expense	3,954	3,954	3,954	3,954	3,954	3,954	3,954	3,954	3,954	14,689	3,953	3,953	7,906
<b>Non-Cash Expense - Total - US\$</b>	<b>153,096</b>	<b>153,096</b>	<b>153,096</b>	<b>153,096</b>	<b>153,096</b>	<b>153,096</b>	<b>153,096</b>	<b>153,096</b>	<b>153,096</b>	<b>295,319</b>	<b>168,045</b>	<b>168,045</b>	<b>336,091</b>
<b>Net Income/(Loss) - excluding grant support - US\$</b>	<b>-11,818</b>	<b>5,352</b>	<b>-33,077</b>	<b>-33,411</b>	<b>-12,905</b>	<b>33,531</b>	<b>6,154</b>	<b>25,565</b>	<b>-2,517</b>	<b>-214,918</b>	<b>-30,243</b>	<b>36,408</b>	<b>6,166</b>
<b>Non-operating Income (Grant Support) - US\$</b>	<b>-44,698</b>	<b>81,975</b>	<b>-28,333</b>	<b>-51,917</b>	<b>-48,763</b>	<b>-56,211</b>	<b>-70,083</b>	<b>-51,925</b>	<b>-430,158</b>	<b>-75,823</b>	<b>0</b>	<b>0</b>	<b>0</b>
<b>Net Income/(Loss) - including grant support - US\$</b>	<b>-56,515</b>	<b>87,327</b>	<b>-61,409</b>	<b>-85,328</b>	<b>-61,668</b>	<b>-22,680</b>	<b>-63,928</b>	<b>-26,360</b>	<b>-432,675</b>	<b>-290,741</b>	<b>-30,243</b>	<b>36,408</b>	<b>6,166</b>

## Financial Table 2 Cash Flow and A/R Report – FY2025: December 2023 – November 2024

<b>Cash Flow Report - US\$</b>	<b>Dec 23</b>	<b>Jan 24</b>	<b>Feb 24</b>	<b>Mar 24</b>	<b>Apr 24</b>	<b>May 24</b>	<b>Jun 24</b>	<b>Jul 24</b>	<b>Aug 24</b>	<b>Sep 24</b>	<b>Oct 24</b>	<b>Nov 24</b>	<b>FY2025 YTD</b>
Receipts	767,881	1,173,088	701,170	546,504	923,034	980,312	596,657	804,312	744,317	1,129,608	874,737	878,445	1,753,182
Disbursements	818,564	1,520,889	565,008	373,425	1,083,877	748,459	822,343	918,324	629,547	1,170,650	822,291	988,377	1,810,668
Net receipts/Disbursements	-50,683	-347,801	136,162	173,079	-160,843	231,853	-225,686	-114,012	114,770	-41,042	52,446	-109,932	-57,487
Cash balance (beginning)	1,836,866	1,786,183	1,438,382	1,574,544	1,747,623	1,586,780	1,818,633	1,592,947	1,478,936	1,593,706	1,552,664	1,605,110	3,157,774
Cash balance (end)	1,786,183	1,438,382	1,574,544	1,747,623	1,586,780	1,818,633	1,592,947	1,478,936	1,593,706	1,552,664	1,605,110	1,495,177	3,100,287
<b>Other Financial Data - US\$</b>													
Cash in Hand	1,694	1,694	1,694	1,694	1,694	1,694	1,694	1,694	1,694	1,694	1,694	1,694	3,388
Cash in Banks (Bank Overdraft)	1,784,489	1,436,688	1,572,850	1,745,930	1,585,086	1,816,939	1,591,254	1,477,242	1,592,012	1,550,970	1,603,416	1,493,484	3,096,900
Stocks/Inventory	1,292,546	1,347,644	1,398,618	1,384,552	1,370,708	1,356,628	1,341,411	1,334,279	1,373,502	1,348,284	1,326,249	1,316,299	2,642,549
Trade Receivable	808,462	637,130	592,789	636,976	652,134	742,961	861,163	977,533	821,779	614,663	599,639	742,066	1,341,705
Prepaid Lease	518,386	515,461	537,154	533,604	530,680	532,344	546,671	582,404	588,086	587,351	680,639	709,844	1,390,483
Collateral with Vital Inc.	499,424	499,424	499,424	499,424	499,424	499,424	499,424	499,424	499,424	499,424	499,424	499,424	998,847
Current Payables (Fuel, Taxes, Payable to Fed Gov't, etc.)	1,000,357	935,208	931,231	1,174,744	961,710	1,179,927	1,050,444	970,275	1,101,085	899,607	987,247	1,042,162	2,029,408
Loans Payable	2,676,800	2,496,850	2,500,803	2,504,756	2,508,709	2,512,662	2,516,615	2,520,568	2,337,673	2,346,978	2,350,931	2,354,884	4,705,815
<b>Total Accounts Receivable (to date) - US\$</b>													
Government Power	553,216	457,193	461,753	469,081	497,056	578,120	658,847	761,995	594,621	180,206	183,179	255,534	438,714
Commercial Power	158,831	148,435	125,561	175,664	168,830	161,932	181,982	163,899	164,064	200,789	162,467	186,706	349,173
Residential Power	94,215	94,728	104,898	100,830	93,701	92,137	90,339	85,938	89,325	127,316	129,769	128,341	258,110
Water	346,461	286,723	255,842	232,700	231,594	242,380	250,859	272,967	268,665	338,377	326,200	359,321	685,521
Sewer	155,844	150,156	144,839	158,805	161,057	168,495	179,240	192,840	205,208	108,500	138,548	152,687	291,235
Allowance for Doubtful	-500,104	-500,104	-500,104	-500,104	-500,104	-500,104	-500,104	-500,104	-500,104	-340,524	-340,524	-340,524	-681,049
<b>Total</b>	<b>808,462</b>	<b>637,130</b>	<b>592,789</b>	<b>636,976</b>	<b>652,134</b>	<b>742,961</b>	<b>861,163</b>	<b>977,533</b>	<b>821,779</b>	<b>614,663</b>	<b>599,639</b>	<b>742,066</b>	<b>1,341,705</b>

### Financial Table 3 Power Sales Report – FY2025: December 2023 – November 2024

	Dec 23	Jan 24	Feb 24	Mar 24	Apr 24	May 24	Jun 24	Jul 24	Aug 24	Sep 24	Oct 24	Nov 24	FY2025 YTD
<b>Power Sales Report</b>													
<b>Power Sales US\$</b>	\$	\$	\$	\$	\$	\$	\$	\$	\$	\$	\$	\$	\$
Government - Post Paid	97,425	92,020	78,171	80,897	53,635	86,235	83,538	109,502	97,540	90,987	93,970	87,620	181,590
Government - Pre Paid (Cash Power)	35,035	39,888	34,967	40,349	47,073	37,550	38,621	40,243	44,185	22,744	44,869	35,430	80,299
Government Streetlights	3,038	3,038	2,842	3,038	2,940	3,038	2,940	3,038	3,038	2,940	3,038	2,940	5,979
Solar	3,372	3,372	3,372	-7,658	3,250	3,250	3,250	3,250	3,250	3,250	2,887	2,887	5,773
Government Scratchcard	0	0	0	0	0	0	0	0	0	0	0	0	0
<b>Government Total</b>	<b>138,870</b>	<b>138,318</b>	<b>119,353</b>	<b>116,626</b>	<b>106,898</b>	<b>130,073</b>	<b>128,350</b>	<b>156,033</b>	<b>148,013</b>	<b>119,921</b>	<b>144,764</b>	<b>128,877</b>	<b>273,641</b>
Commercial - Post Paid	222,880	224,822	196,231	222,824	216,684	230,427	235,801	247,865	244,995	224,405	222,990	227,536	450,526
Commercial - Pre Paid (Cashpower)	91,929	88,341	93,722	95,913	98,524	107,785	93,090	103,507	98,405	108,674	98,891	105,342	204,233
Commercial - Scratchcard	0	0	0	0	0	0	0	0	0	0	0	0	0
<b>Commercial Total</b>	<b>314,808</b>	<b>313,163</b>	<b>289,952</b>	<b>318,737</b>	<b>315,207</b>	<b>338,213</b>	<b>328,892</b>	<b>351,372</b>	<b>343,400</b>	<b>333,079</b>	<b>321,881</b>	<b>332,878</b>	<b>654,759</b>
Residential - Post Paid	7,826	5,715	6,928	7,378	7,036	8,003	2,978	4,075	5,792	8,177	7,840	6,731	14,571
Residential - Pre Paid (Cashpower)	220,950	198,538	186,317	216,192	213,792	222,454	212,761	214,756	219,114	196,048	206,451	205,658	412,110
Residential Scratch Card Sales	21,413	19,903	17,283	17,809	14,865	18,798	15,873	17,526	18,345	18,024	20,790	18,027	38,817
<b>Residential Total</b>	<b>250,188</b>	<b>224,157</b>	<b>210,529</b>	<b>241,379</b>	<b>235,692</b>	<b>249,256</b>	<b>231,611</b>	<b>236,358</b>	<b>243,250</b>	<b>222,249</b>	<b>235,082</b>	<b>230,416</b>	<b>465,498</b>
Tonoas Government	39	48	23	48	0	0	0	2,548	99	48	78	48	126
Tonoas Commercial	584	672	451	1,000	48	1,048	1,610	688	1,296	250	2,935	585	3,520
Tonoas Residential	13,400	12,541	11,709	12,622	13,345	12,762	12,673	12,674	14,732	13,204	14,100	14,115	28,215
Tonoas Streetlight	737	689	737	737	713	737	713	737	713	737	713	737	1,449
<b>Tonoas Total Power Sales - US\$</b>	<b>14,758</b>	<b>14,006</b>	<b>12,872</b>	<b>14,406</b>	<b>14,153</b>	<b>14,546</b>	<b>14,995</b>	<b>16,645</b>	<b>16,863</b>	<b>14,215</b>	<b>17,849</b>	<b>15,460</b>	<b>33,309</b>
<b>Trade Power Sales Total</b>	<b>703,867</b>	<b>675,638</b>	<b>619,834</b>	<b>676,741</b>	<b>657,797</b>	<b>717,542</b>	<b>688,853</b>	<b>743,762</b>	<b>734,662</b>	<b>675,250</b>	<b>719,576</b>	<b>707,632</b>	<b>1,427,207</b>
Intercompany - CPUC Office	1,857	1,679	1,855	1,679	1,699	1,890	1,699	1,356	1,674	1,560	1,687	1,442	3,446
Intercompany - CPUC Power Operation	4,264	4,269	4,038	4,160	3,855	4,528	3,989	4,960	4,756	3,795	4,278	4,220	8,498
Intercompany - CPUC Water Operations	4,193	4,547	3,792	4,845	4,383	5,021	4,464	4,440	5,562	5,008	5,161	4,018	9,179
Intercompany - CPUC Sewer Operations	6,634	5,915	5,897	4,867	4,653	5,289	6,734	6,579	6,223	6,469	6,488	6,488	12,956
Cash Power UnEamed	0	0	0	0	0	0	0	0	0	0	0	0	0
<b>Total Power Sales - US\$</b>	<b>720,816</b>	<b>692,048</b>	<b>635,415</b>	<b>692,363</b>	<b>672,385</b>	<b>734,270</b>	<b>705,879</b>	<b>761,097</b>	<b>751,144</b>	<b>691,837</b>	<b>737,170</b>	<b>724,116</b>	<b>1,461,286</b>
<b>Power Sales kWh</b>	<b>kWh</b>	<b>kWh</b>	<b>kWh</b>	<b>kWh</b>	<b>kWh</b>	<b>kWh</b>	<b>kWh</b>	<b>kWh</b>	<b>kWh</b>	<b>kWh</b>	<b>kWh</b>	<b>kWh</b>	<b>kWh</b>
Government - Post Paid	171,670	166,709	144,170	144,774	96,392	155,762	153,092	202,869	179,848	170,077	179,635	168,966	348,601
Government - Pre Paid (Cash Power)	61,725	72,510	63,984	72,950	84,954	67,989	70,748	74,607	81,613	42,464	86,138	68,569	154,707
Government - Street Lights	10,377	10,377	10,377	10,377	10,377	10,377	10,377	10,377	10,377	10,377	10,377	10,377	20,754
Solar	0	0	0	0	0	0	0	0	0	0	0	0	0
Government Scratchcard	0	0	0	0	0	0	0	0	0	0	0	0	0
<b>Government Total</b>	<b>243,772</b>	<b>249,596</b>	<b>218,531</b>	<b>228,102</b>	<b>191,723</b>	<b>234,127</b>	<b>234,217</b>	<b>287,853</b>	<b>271,838</b>	<b>222,918</b>	<b>276,150</b>	<b>247,913</b>	<b>524,063</b>
Commercial - Post Paid	408,467	423,955	372,570	417,625	405,620	433,331	449,733	477,330	469,967	437,539	445,877	458,121	903,998
Commercial - Pre Paid (Cashpower)	167,876	166,650	178,009	179,915	184,467	202,490	177,012	199,281	188,732	210,772	197,427	212,084	409,511
Commercial Scratchcard	0	0	0	0	0	0	0	0	0	0	0	0	0
<b>Commercial Total</b>	<b>576,343</b>	<b>590,605</b>	<b>550,579</b>	<b>597,540</b>	<b>590,087</b>	<b>635,821</b>	<b>626,745</b>	<b>676,611</b>	<b>658,699</b>	<b>648,311</b>	<b>643,304</b>	<b>670,205</b>	<b>1,313,509</b>
Residential - Post Paid	15,182	11,539	13,907	14,598	13,885	15,993	6,450	8,320	11,767	16,997	16,663	14,405	31,068
Residential - Pre Paid (Cashpower)	426,873	396,997	375,261	429,720	424,105	442,871	429,040	438,814	445,897	403,724	438,419	440,665	879,084
Residential Scratch Card Sales	43,112	41,708	36,319	36,902	34,032	39,105	33,774	37,185	39,085	39,626	46,484	40,488	86,972
<b>Residential Total</b>	<b>485,167</b>	<b>450,244</b>	<b>425,488</b>	<b>481,220</b>	<b>472,023</b>	<b>497,970</b>	<b>469,264</b>	<b>484,319</b>	<b>496,749</b>	<b>460,347</b>	<b>501,566</b>	<b>495,558</b>	<b>997,124</b>
Tonoas Government	63	95	39	80	0	0	0	4,367	169	82	138	85	227
Tonoas Commercial	987	1,171	790	1,733	82	1,818	2,824	1,220	2,291	448	5,386	1,082	6,467
Tonoas Residential	23,860	23,049	21,663	23,070	24,347	23,360	23,473	23,760	27,515	24,931	27,384	27,639	55,022
Tonoas Streetlight	2,946	2,946	2,946	2,946	2,946	2,946	2,946	2,946	2,946	2,946	2,946	2,946	5,892
<b>Tonoas Total Power Sales - kWh</b>	<b>27,855</b>	<b>27,261</b>	<b>25,438</b>	<b>27,828</b>	<b>27,455</b>	<b>28,124</b>	<b>29,243</b>	<b>32,293</b>	<b>32,921</b>	<b>28,407</b>	<b>35,853</b>	<b>31,751</b>	<b>67,605</b>
<b>Trade Power Sales Total</b>	<b>1,305,282</b>	<b>1,290,445</b>	<b>1,194,598</b>	<b>1,306,862</b>	<b>1,253,833</b>	<b>1,367,918</b>	<b>1,330,226</b>	<b>1,448,783</b>	<b>1,427,285</b>	<b>1,331,576</b>	<b>1,456,873</b>	<b>1,445,428</b>	<b>2,902,300</b>
Intercompany - CPUC Office	7,371	6,664	7,362	6,945	6,734	7,500	7,299	5,379	6,642	6,191	6,746	7,039	13,785
Intercompany - CPUC Power Operation	16,920	16,941	16,022	16,506	15,296	17,969	16,879	18,874	18,874	15,061	17,112	16,879	33,991
Intercompany - CPUC Water Operations	16,640	18,044	15,049	19,227	17,394	19,926	17,713	17,620	22,073	19,874	20,633	16,070	36,703
Intercompany - CPUC Sewer Operations	26,326	23,472	23,400	19,312	18,466	20,988	26,273	26,107	17,815	24,695	25,874	25,951	51,825
Cash Power Unearned (accrual)	0	0	0	0	0	0	0	0	0	0	0	0	0
<b>Total Power Sales - kWh</b>	<b>1,372,539</b>	<b>1,355,566</b>	<b>1,256,431</b>	<b>1,368,852</b>	<b>1,311,723</b>	<b>1,434,301</b>	<b>1,397,790</b>	<b>1,517,570</b>	<b>1,492,689</b>	<b>1,397,397</b>	<b>1,527,238</b>	<b>1,511,367</b>	<b>3,038,604</b>

### Financial Table 4 Water Sales Report – FY2025: December 2023 – November 2024

Water/Sewer Sales Report	Dec 23	Jan 24	Feb 24	Mar 24	Apr 24	May 24	Jun 24	Jul 24	Aug 24	Sep 24	Oct 24	Nov 24	FY2025 YTD
<b>Water Sales US\$</b>	\$	\$	\$	\$	\$	\$	\$	\$	\$	\$	\$	\$	\$
Government	14,292	10,686	10,382	10,492	11,084	9,962	11,689	12,366	12,226	7,642	13,185	15,932	29,117
Commercial	10,619	8,400	9,830	15,504	9,244	10,727	3,248	9,908	9,621	15,845	7,574	12,545	20,120
Residential	13,773	11,133	11,449	10,644	12,581	14,828	16,028	16,611	7,907	14,631	14,776	18,772	33,548
Provision for Billing Errors	7,137	5,929	5,574	11,827	6,854	3,285	2,170	4,332	5,781	3,939	3,321	2,906	6,227
<b>Total</b>	<b>45,821</b>	<b>36,147</b>	<b>37,234</b>	<b>48,467</b>	<b>39,763</b>	<b>38,801</b>	<b>33,135</b>	<b>43,218</b>	<b>35,534</b>	<b>42,057</b>	<b>38,856</b>	<b>50,154</b>	<b>89,011</b>
<b>Sewer Sales - US\$</b>													
Government	7,116	5,321	3,116	5,088	5,455	4,915	5,805	6,093	5,982	9,468	6,492	7,832	14,325
Commercial	7,617	6,816	7,208	9,451	6,563	8,085	7,750	7,612	7,405	10,363	6,692	8,834	15,527
Commercial with No Water	0	0	0	0	0	0	0	0	0	0	0	0	0
Residential	3,626	3,303	2,075	3,961	3,518	1,790	3,642	3,825	7,788	3,936	2,807	4,110	6,917
Residential with No Water	0	0	0	0	0	0	0	0	0	0	0	0	0
Provision for Billing Errors	0	0	0	0	0	0	0	0	0	0	0	0	0
<b>Sewer Sales</b>	<b>18,359</b>	<b>15,440</b>	<b>12,400</b>	<b>18,499</b>	<b>15,536</b>	<b>14,789</b>	<b>17,197</b>	<b>17,530</b>	<b>21,175</b>	<b>23,766</b>	<b>15,992</b>	<b>20,776</b>	<b>36,768</b>
													0
<b>Total Water &amp; Sewer Sales</b>	<b>64,179</b>	<b>51,587</b>	<b>49,634</b>	<b>66,966</b>	<b>55,298</b>	<b>53,590</b>	<b>50,332</b>	<b>60,748</b>	<b>56,710</b>	<b>65,823</b>	<b>54,848</b>	<b>70,931</b>	<b>125,779</b>
<b>Water Sales - Gallons</b>													
Government	2,830,660	2,099,680	2,048,310	2,066,850	2,163,760	1,926,540	2,301,550	2,397,620	2,353,740	1,793,420	2,531,120	3,087,030	5,618,150
Commercial	2,108,952	1,612,323	1,830,714	2,802,532	1,812,168	2,114,148	2,345,632	2,075,041	1,972,437	3,342,782	1,584,339	2,481,175	4,065,514
Residential	5,427,270	4,552,736	4,653,958	4,661,498	4,987,890	5,835,360	6,195,252	6,433,020	5,445,430	6,109,180	5,997,840	7,153,183	13,151,023
Water Delivery & Bunkering	275,000	313,000	307,000	390,000	234,000	176,000	109,000	121,500	161,500	126,500	130,700	133,000	263,700
<b>Total</b>	<b>10,641,882</b>	<b>8,577,739</b>	<b>8,839,982</b>	<b>9,920,880</b>	<b>9,197,818</b>	<b>10,052,048</b>	<b>10,951,434</b>	<b>11,027,181</b>	<b>9,933,107</b>	<b>11,371,882</b>	<b>10,243,999</b>	<b>12,854,388</b>	<b>23,098,387</b>

## Financial Table 5 Key Performance Indicators – FY2025: December 2023 – November 2024

	Dec 23	Jan 24	Feb 24	Mar 24	Apr 24	May 24	Jun 24	Jul 24	Aug 24	Sep 24	Oct 24	Nov 24	FY2025 YTD
<b>1a. Power Loss - Weno</b>	<b>8.7%</b>	<b>10.4%</b>	<b>8.9%</b>	<b>11.3%</b>	<b>12.7%</b>	<b>10.6%</b>	<b>10.5%</b>	<b>7.6%</b>	<b>7.0%</b>	<b>12.4%</b>	<b>8.3%</b>	<b>6.9%</b>	<b>7.6%</b>
Total Power Generated - kWh	1,503,718	1,513,136	1,379,555	1,543,421	1,502,920	1,603,984	1,562,153	1,642,954	1,604,281	1,594,350	1,626,795	1,589,147	3,215,942
Total Power Billed - kWh	1,372,539	1,355,566	1,256,431	1,368,852	1,311,723	1,434,301	1,397,790	1,517,570	1,492,689	1,397,397	1,491,384	1,479,615	2,971,000
Generation Loss (actual from Jun 17)	13,827	13,875	12,977	13,354	12,847	14,619	12,929	16,354	15,661	11,796	14,051	14,354	2,523
Distribution Loss Derived - kWh	79,759	105,867	75,659	122,630	140,777	114,964	112,380	67,956	55,824	145,298	80,690	55,449	136,139
Commercial Loss (assumed 2.5%) - kWh	37,593	37,828	34,489	38,586	37,573	40,100	39,054	41,074	40,107	39,859	40,670	39,729	80,399
Total Loss - kWh	131,179	157,570	123,124	174,569	191,197	169,683	164,363	125,384	111,592	196,953	135,411	109,532	244,942
Distribution Loss %	5.3%	7.0%	5.5%	7.9%	9.4%	7.2%	7.2%	4.1%	3.5%	9.1%	5.0%	3.5%	4.2%
<b>1b. Power loss - Tonoas</b>	<b>10.6%</b>	<b>12.6%</b>	<b>14.9%</b>	<b>15.5%</b>	<b>13.6%</b>	<b>14.6%</b>	<b>10.5%</b>	<b>2.1%</b>	<b>6.0%</b>	<b>14.0%</b>	<b>2.1%</b>	<b>15.0%</b>	<b>8.6%</b>
Tonoas - Power Purchased - kWh	31,160	31,200	29,880	32,920	31,760	32,920	32,680	33,000	35,040	33,040	36,640	37,360	74,000
Tonoas - Power Billed - kWh	27,855	27,261	25,438	27,828	27,455	28,124	29,243	32,293	32,921	28,407	35,853	31,751	67,605
Power Loss - kWh	3,305	3,939	4,442	5,092	4,305	4,796	3,437	707	2,119	4,633	787	5,609	6,395
<b>1c. Power Loss - Whole Company</b>	<b>8.8%</b>	<b>10.5%</b>	<b>9.1%</b>	<b>11.4%</b>	<b>12.7%</b>	<b>10.7%</b>	<b>10.5%</b>	<b>7.5%</b>	<b>6.9%</b>	<b>12.4%</b>	<b>8.2%</b>	<b>7.1%</b>	<b>7.6%</b>
Power Generated & Purchased	1,534,878	1,544,336	1,409,435	1,576,341	1,534,680	1,636,904	1,594,833	1,675,954	1,639,321	1,627,390	1,663,435	1,626,507	3,289,942
Power Billed	1,400,395	1,382,827	1,281,869	1,396,680	1,339,178	1,462,425	1,427,033	1,549,863	1,525,610	1,425,805	1,527,238	1,511,367	3,038,604
Power Loss - kWh	134,483	161,509	127,566	179,661	195,502	174,479	167,800	126,091	113,711	201,585	136,197	115,140	251,338
<b>1d. Non Revenue Water</b>	<b>43.6%</b>	<b>56.4%</b>	<b>44.3%</b>	<b>42.9%</b>	<b>39.6%</b>	<b>43.7%</b>	<b>40.8%</b>	<b>37.1%</b>	<b>50.0%</b>	<b>35.6%</b>	<b>41.5%</b>	<b>25.3%</b>	<b>33.5%</b>
Water Produced (million gallons)	18.88	19.65	15.86	17.37	15.23	17.85	18.49	17.52	19.89	17.67	17.51	17.20	34.71
Water Billed (million gallons)	10.64	8.58	8.84	9.92	9.20	10.05	10.95	11.03	9.93	11.37	10.24	12.85	23.10
<b>2. Current ratio</b>	<b>6.22</b>	<b>6.41</b>	<b>6.38</b>	<b>5.15</b>	<b>6.01</b>	<b>4.98</b>	<b>5.76</b>	<b>6.12</b>	<b>5.31</b>	<b>5.76</b>	<b>5.11</b>	<b>5.07</b>	<b>5.354</b>
	4.99	5.33	5.43	4.35	4.99	4.33	5.20	5.03	3.93	4.65	4.63	4.90	4.829
	51.42	27.78	37.07	32.54	33.80	31.48	32.71	30.42	28.36	19.92	24.51	26.90	26.375
	8.19	9.12	8.22	9.47	10.53	9.28	11.04	10.27	11.59	5.07	8.65	12.03	9.630
<b>3. ROA (excludes other operating income/grant support)</b>	<b>0.00</b>	<b>0.00</b>	<b>0.00</b>	<b>0.00</b>	<b>0.00</b>	<b>0.00</b>	<b>0.00</b>	<b>0.00</b>	<b>0.00</b>	<b>-0.01</b>	<b>0.00</b>	<b>0.00</b>	<b>0.03%</b>
Power Business	0.00	0.00	0.00	0.00	0.00	0.01	0.00	0.00	0.00	-0.01	0.00	0.01	0.89%
Water Business	-0.01	-0.01	-0.01	-0.01	-0.01	-0.01	-0.01	-0.01	-0.01	-0.03	-0.01	-0.01	-2.46%
Sewer Business	-0.01	-0.01	-0.01	-0.01	-0.01	-0.01	-0.01	-0.01	-0.01	0.00	-0.01	-0.01	-1.56%
<b>4. Operating ratio</b>	<b>0.83</b>	<b>0.80</b>	<b>0.84</b>	<b>0.85</b>	<b>0.83</b>	<b>0.78</b>	<b>0.80</b>	<b>0.80</b>	<b>0.83</b>	<b>0.96</b>	<b>0.83</b>	<b>0.75</b>	<b>0.792</b>
Power Business	0.79	0.74	0.79	0.83	0.79	0.74	0.77	0.76	0.79	0.90	0.78	0.72	0.748
Water Business	0.99	1.42	1.04	0.89	0.97	0.99	1.13	0.96	1.24	1.53	1.21	0.92	1.047
Sewer Business	1.94	1.98	2.63	1.69	1.83	2.27	1.75	1.99	1.56	1.74	2.47	1.52	1.931
<b>5. Days in Accounts Receivable</b>	<b>31.34</b>	<b>26.07</b>	<b>24.63</b>	<b>25.52</b>	<b>26.37</b>	<b>28.70</b>	<b>33.50</b>	<b>36.14</b>	<b>30.89</b>	<b>23.89</b>	<b>23.47</b>	<b>28.00</b>	<b>23.048</b>
Power Business	33.98	30.75	30.96	32.70	33.19	34.45	38.75	40.33	34.23	21.60	19.99	23.64	19.846
Water Business	234.40	245.89	199.26	148.84	174.73	193.65	227.13	195.80	234.38	241.37	260.25	214.93	223.549
Sewer Business	263.15	301.48	338.74	266.12	311.01	353.18	312.68	341.02	300.42	136.96	268.58	220.47	229.857

## Financial Table 6 CPUC Performance Against Budget FY 2025

CPUC - WHOLE BUSINESS INCOME STATEMENT	FY2025	Budget YTD	Actual YTD	Variance YTD	Variance %
<b>REVENUE</b>					
Power Operating Revenue	\$9,020,445	\$1,503,407	\$1,461,286	-\$42,121	-2.8%
Water Operating Revenue	\$494,118	\$82,353	\$89,011	\$6,658	8.1%
Sewerage Operating Revenue	\$186,444	\$31,074	\$36,768	\$5,694	18.3%
<b>TOTAL OPERATING REVENUE</b>	<b>\$9,701,007</b>	<b>\$1,616,834</b>	<b>\$1,587,065</b>	<b>-\$29,770</b>	<b>-1.8%</b>
<b>Other Revenue</b>					
Power	\$6,698	\$1,116	\$6,722	\$5,605	502.1%
Water	\$3,801	\$633	\$5,633	\$5,000	789.3%
Sewer	\$1,175	\$196	\$250	\$54	-
<b>OTHER REVENUE TOTAL</b>	<b>\$11,674</b>	<b>\$1,946</b>	<b>\$12,605</b>	<b>\$10,660</b>	<b>547.9%</b>
<b>TOTAL OPERATING REVENUE</b>	<b>\$9,712,681</b>	<b>\$1,618,780</b>	<b>\$1,599,670</b>	<b>-\$19,110</b>	<b>-1.2%</b>
<b>EXPENDITURE</b>					
Power Variable Cost	\$5,108,453	\$851,409	\$744,907	-\$106,502	-12.5%
Power Fixed Cost	\$2,101,068	\$350,178	\$348,327	-\$1,851	-0.5%
Water Variable Cost	\$69,085	\$11,514	\$11,679	\$164	1.4%
Water Fixed Cost	\$473,572	\$78,929	\$81,496	\$2,567	3.3%
Sewer Variable Cost	\$86,848	\$14,475	\$14,855	\$380	2.6%
Sewer Fixed Cost	\$368,651	\$61,442	\$56,152	-\$5,290	-8.6%
<b>TOTAL OPERATING EXPENSE</b>	<b>\$8,207,678</b>	<b>\$1,367,946</b>	<b>\$1,257,414</b>	<b>-\$110,533</b>	<b>-8.1%</b>
<b>OPERATING INCOME</b>					
Operating Income Power	\$1,817,622	\$302,937	\$374,774	\$71,837	23.7%
Operating Income Water	-\$44,739	-\$7,456	\$1,470	\$8,927	-119.7%
Operating Income Sewer	-\$267,881	-\$44,647	-\$33,988	\$10,659	-23.9%
<b>OPERATING INCOME (Excl Int &amp; Deprec.)</b>	<b>\$1,505,003</b>	<b>\$250,834</b>	<b>\$342,256</b>	<b>\$91,423</b>	<b>36.4%</b>
<b>INTEREST</b>					
Interest Power	\$58,073	\$9,679	\$7,906	-\$1,773	-18.3%
Interest Water	\$0	\$0	\$0	\$0	0.0%
Interest Sewer	\$0	\$0	\$0	\$0	0.0%
<b>TOTAL INTEREST</b>	<b>\$58,073</b>	<b>\$9,679</b>	<b>\$7,906</b>	<b>-\$1,773</b>	<b>-18.3%</b>
<b>DEPRECIATION</b>					
Depreciation Power	\$1,286,446	\$214,408	\$214,408	\$0	0.0%
Depreciation Water	\$570,194	\$95,032	\$95,032	\$0	0.0%
Depreciation Sewer	\$112,469	\$18,745	\$18,745	\$0	0.0%
<b>TOTAL DEPRECIATION</b>	<b>\$1,969,109</b>	<b>\$328,185</b>	<b>\$328,185</b>	<b>\$0</b>	<b>0.0%</b>
<b>Depreciation as % of Revenue</b>	<b>18.3%</b>	<b>20.3%</b>	<b>20.5%</b>	<b>0.2%</b>	<b>1.2%</b>
<b>OPERATING INCOME (Incl. Int. &amp; Deprec.)</b>					
Total Operating Income Power	\$473,103	\$78,851	\$152,461	\$73,610	93.4%
Total Operating Income Water	-\$614,933	-\$102,489	-\$93,562	\$8,927	-8.7%
Total Operating Income Sewer	-\$380,350	-\$63,392	-\$52,733	\$10,659	-16.8%
<b>TOTAL OPERATING INCOME (Incl. Int &amp; Deprec.)</b>	<b>-\$522,179</b>	<b>-\$87,030</b>	<b>\$6,166</b>	<b>\$93,196</b>	<b>-107.1%</b>
<b>NON-OPERATING REVENUES/(EXPENSES)</b>					
Management Support	\$0	\$0	\$0	\$0	#DIV/o!
Regional Coordinators SPC	-\$137,723	-\$22,954	-\$3,558	\$19,396	-84.5%
PMU Staffing - ADB	-\$503,738	-\$83,956	-\$510,132	-\$426,176	507.6%
INTEREST INCOM \$	\$0	\$0	\$16	\$16	-
<b>TOTAL NON-OPERATING REVENUES/(EXPENSES)</b>	<b>-\$641,461</b>	<b>-\$106,910</b>	<b>-\$513,674</b>	<b>-\$406,764</b>	<b>380.5%</b>
<b>CAPITAL GRANT SUPPORT</b>					
Compact Management Grant	\$0	\$0	\$0	\$0	#DIV/o!
SPC Grant - Regional Development	\$137,723	\$22,954	\$0	-\$22,954	-100.0%
ADB CVSSP - Staffing	\$503,738	\$83,956	\$395,512	\$311,555	371.1%
Other Grant Support	\$0	\$0	\$0	\$0	-
<b>TOTAL CAPITAL GRANT SUPPORT</b>	<b>\$641,461</b>	<b>\$106,910</b>	<b>\$395,512</b>	<b>\$288,601</b>	<b>269.9%</b>
Project Grants	\$0	\$0	\$0	\$0	
<b>CHANGE IN NET ASSETS</b>	<b>\$119,282</b>	<b>\$19,880</b>	<b>-\$111,996</b>	<b>-\$131,877</b>	<b>-663.4%</b>

## Power Table 1 Power Operation Indicators – FY2025: December 2023 – November 2025

	Dec 23	Jan 24	Feb 24	Mar 24	Apr 24	May 24	Jun 24	Jul 24	Aug 24	Sep 24	Oct 24	Nov 24	FY2025
<b>Generation Statistics</b>													
Diesel Generation - kWh	1,450,639	1,454,626	1,330,769	1,477,265	1,437,794	1,546,373	1,497,782	1,575,281	1,535,502	1,538,943	1,560,024	1,533,772	3,093,796
Peak Generation - kW	2,648	2,711	2,700	2,726	2,778	2,927	2,999	2,968	2,968	2,968	3,026	3,026	3,026
Fuel Consumption - Gallons	96,259	97,068	88,505	98,670	95,679	102,256	103,413	104,371	97,759	98,726	99,905	101,697	201,602
Average Fuel Price (\$/Gallon)	3.94	3.75	3.73	3.82	3.81	4.81	3.69	3.64	3.67	3.57	3.36	3.37	3.36
Load Factor (%)	78%	77%	70%	78%	74%	75%	72%	76%	74%	74%	74%	72%	18%
Capacity Factor (%)	47%	48%	48%	49%	50%	52%	54%	53%	53%	53%	54%	54%	41%
Availability Factor (%)	100%	100%	100%	100%	100%	100%	100%	100%	100%	100%	100%	100%	0%
Reserve Plant Margin (%)	195%	188%	189%	186%	181%	166%	160%	163%	163%	163%	158%	158%	158%
<b>Solar Generation</b>													
Solar PV Generation - kWh	53,079	58,510	48,786	66,156	65,126	57,611	64,371	67,673	68,779	55,407	66,771	55,375	122,146
Solar Generation %	3.5%	3.9%	3.5%	4.3%	4.3%	3.6%	4.1%	4.1%	4.3%	3.5%	4.1%	3.5%	3.8%
Peak PV Generation - kW	375	413	344	467	460	407	454	478	485	391	471	391	110
Avoided Fuel - Gallons	3,522	3,904	3,245	4,419	4,334	3,810	4,444	4,484	4,379	3,554	4,276	3,672	7,959
Avoided Cost of Fuel - US\$	13,878	14,657	12,102	16,879	16,497	18,311	16,413	16,311	16,056	12,681	14,369	12,362	26,773
Tons of CO2 avoided	35.6	39.4	32.8	44.6	43.8	38.5	44.9	45.3	44.2	35.9	43.2	37.1	80.4
Labour Productivity (kWh/Emp/d)	1,619	1,623	1,485	1,649	1,605	1,726	1,672	1,758	1,714	1,718	1,741	1,712	490
<b>SFOC (kWh/gal)</b>													
DG1 - GE 1.8	15.58	15.51	15.69	15.33	15.63	15.25	15.14	15.46	15.89	16.96	16.54	15.40	15.74
DG2 - GE 1.8	15.63	15.50	15.57	15.81	15.65	15.89	14.10	15.49	16.03	16.02	16.07	15.44	15.81
DG3 - CAT 1.6	-	-	-	-	-	-	-	-	-	-	-	-	-
DG4 - CAT 1.3	14.13	14.18	14.14	13.83	14.01	14.00	14.00	13.97	13.13	13.02	14.50	14.17	14.35
DG5 - CAT 1.3	14.00	14.00	13.87	14.00	13.88	14.27	14.00	13.92	14.51	14.07	14.37	14.00	14.21
<b>SLOC (kWh/gal)</b>													
DG1 - GE 1.8	1,249	4,473	5,729	6,560	8,824	1,644	10,116	5,234	6,786	5,054	812	7,719	2,107
DG2 - GE 1.8	6,737	9,596	11,376	1,834	9,618	1,484	11,679	1,244	10,474	2,164	9,223	5,549	7,267
DG3 - CAT 1.6	0	0	0	0	0	0	0	0	0	0	0	0	0
DG4 - CAT 1.3	0	0	0	0	0	0	0	0	0	0	0	0	3,845
DG5 - CAT 1.3	0	0	0	0	0	0	0	0	0	0	0	0	0
CAT #3 - Retired May 2017	0	0	0	0	0	0	0	0	0	0	0	0	0
Forced Outage Factor (%)	0.0%	0.0%	0.0%	0.0%	0.0%	0.0%	0.0%	0.0%	0.0%	0.0%	0.0%	0.0%	0.01%
Planned Outage Factor (%)	0.0%	0.0%	0.0%	0.0%	0.0%	0.0%	0.0%	0.0%	0.0%	0.0%	0.0%	0.0%	0.00%
<b>Distribution</b>													
Customers/Employee	25	25	25	25	25	25	25	25	25	25	25	25	25
Transformer Utilisation (%)	24.9%	25.5%	25.4%	25.6%	26.1%	27.5%	28.2%	27.9%	27.9%	27.9%	28.5%	28.5%	28.5%
Distribution Losses (%)	0.0%	0.0%	0.0%	0.0%	0.0%	0.0%	0.0%	0.0%	0.0%	0.0%	0.0%	0.0%	0.0%
SAIDI (hours/consumer)	0.15	0.11	0.00	0.00	0.04	0.00	0.28	0.09	0.00	0.19	0.05	0.02	0.00
SAIFI	0.00	0.00	0.00	0.00	0.00	0.00	0.01	0.00	0.00	0.00	0.00	0.00	0.000
Average Cost (\$/kWh)	0.252	0.241	0.239	0.244	0.242	0.306	0.244	0.231	0.223	0.221	0.206	0.215	0.211

## Power Table 2 Power Generation Statistics – FY2025: December 2023 – November 2024

	Dec 23	Jan 24	Feb 24	Mar 24	Apr 24	May 24	Jun 24	Jul 24	Aug 24	Sep 24	Oct 24	Nov 24	FY2025 YTD
<b>Generation - Engine Output (kWh)</b>													
DG1 - GE 1.8	440,746	326,494	372,365	380,467	511,817	603,247	627,167	795,546	454,662	298,166	284,993	625,255	910,248
DG2 - GE 1.8	538,970	623,723	511,920	585,067	442,412	514,840	420,433	426,670	837,924	826,639	802,381	549,336	1,351,717
DG3 - CAT 1.6	0	0	0	0	0	0	0	4	0	0	0	0	0
DG4 - CAT 1.3	227,821	251,512	215,953	331,497	262,583	204,977	246,844	5,268	20,883	18,347	228,746	174,977	403,723
DG5 - CAT 1.3	243,102	252,897	230,531	180,234	220,982	223,309	203,338	347,793	222,033	395,791	243,904	184,204	428,108
CAT #3 - Retired May 2017	0	0	0	0	0	0	0	0	0	0	0	0	0
<b>Diesel Generation Total (kWh)</b>	<b>1,450,639</b>	<b>1,454,626</b>	<b>1,330,769</b>	<b>1,477,265</b>	<b>1,437,794</b>	<b>1,546,373</b>	<b>1,497,782</b>	<b>1,575,281</b>	<b>1,535,502</b>	<b>1,538,943</b>	<b>1,560,024</b>	<b>1,533,772</b>	<b>3,093,796</b>
PP Solar F1	8,559	9,464	8,818	10,334	8,581	9,162	12,155	12,155	9,587	7,827	16,080	7,927	24,007
High School Solar F1	11,040	14,880	6,480	14,520	17,400	18,720	18,240	18,720	19,440	15,480	16,080	15,600	31,680
PP Solar F3	16,366	15,538	14,726	17,301	14,437	11,682	14,702	15,176	16,536	13,212	14,111	13,177	27,288
Airport Roof F4	0	0	0	0	0	0	0	0	0	0	0	0	0
Airport Carpark F4	11,265	12,288	12,605	16,906	14,726	15,691	13,329	15,320	16,536	13,401	14,530	13,195	27,725
WWTP F4	5,849	6,340	6,157	7,095	9,982	2,356	5,945	6,302	6,680	5,487	5,970	5,476	11,446
<b>Solar PV Generation Total (kWh)</b>	<b>53,079</b>	<b>58,510</b>	<b>48,786</b>	<b>66,156</b>	<b>65,126</b>	<b>57,611</b>	<b>64,371</b>	<b>67,673</b>	<b>68,779</b>	<b>55,407</b>	<b>66,771</b>	<b>55,375</b>	<b>122,146</b>
<b>Total Generation (kWh)</b>	<b>1,503,718</b>	<b>1,513,136</b>	<b>1,379,555</b>	<b>1,543,421</b>	<b>1,502,920</b>	<b>1,603,984</b>	<b>1,562,153</b>	<b>1,642,954</b>	<b>1,604,281</b>	<b>1,594,350</b>	<b>1,626,795</b>	<b>1,589,147</b>	<b>3,215,942</b>
<b>Maximum Demand (kW)</b>	<b>2,648</b>	<b>2,711</b>	<b>2,700</b>	<b>2,726</b>	<b>2,778</b>	<b>2,927</b>	<b>2,999</b>	<b>2,968</b>	<b>2,968</b>	<b>2,960</b>	<b>3,026</b>	<b>3,026</b>	<b>3,026</b>
<b>Engine Rating kW (at 0.8 PF)</b>													
DG1 - GE 1.8	1,800	1,800	1,800	1,800	1,800	1,800	1,800	1,800	1,800	1,800	1,800	1,800	1,800
DG2 - GE 1.8	1,800	1,800	1,800	1,800	1,800	1,800	1,800	1,800	1,800	1,800	1,800	1,800	1,800
DG3 - CAT 1.6	1,600	1,600	1,600	1,600	1,600	1,600	1,600	1,600	1,600	1,600	1,600	1,600	1,600
DG4 - CAT 1.3	1,300	1,300	1,300	1,300	1,300	1,300	1,300	1,300	1,300	1,300	1,300	1,300	1,300
DG5 - CAT 1.3	1,300	1,300	1,300	1,300	1,300	1,300	1,300	1,300	1,300	1,300	1,300	1,300	1,300
CAT #3 - Retired May 2017	1,200	1,200	1,200	1,200	1,200	1,200	1,200	1,200	1,200	1,200	1,200	1,200	1,200
<b>Station Services (kWh)</b>	<b>16,920</b>	<b>16,941</b>	<b>16,022</b>	<b>16,506</b>	<b>15,296</b>	<b>17,969</b>	<b>15,829</b>	<b>19,681</b>	<b>18,874</b>	<b>15,061</b>	<b>17,112</b>	<b>16,879</b>	<b>33,991</b>
<b>Running Hours</b>													
DG1 - GE 1.8	366	276	315	303	402	486	537	659	356	332	252	540	792
DG2 - GE 1.8	438	492	429	460	345	416	351	881	735	201	688	478	1,166
DG3 - CAT 1.6	0	0	0	0	0	0	0	0	0	0	0	0	0
DG4 - CAT 1.3	446	288	287	535	332	304	343	18	59	19	377	0	377
DG5 - CAT 1.3	356	353	385	225	312	320	310	520	404	483	322	255	577
CAT #3 - Retired May 2017	0	0	0	0	0	0	0	0	0	0	0	0	0
<b>Total Hours</b>	<b>1,606</b>	<b>1,409</b>	<b>1,416</b>	<b>1,523</b>	<b>1,391</b>	<b>1,526</b>	<b>1,541</b>	<b>2,078</b>	<b>1,554</b>	<b>1,035</b>	<b>1,639</b>	<b>1,273</b>	<b>2,912</b>



### Power Table 3 Fuel & Lube Oil Statistics - FY2025: December 2023 – November 2024

	Dec 23	Jan 24	Feb 24	Mar 24	Apr 24	May 24	Jun 24	Jul 24	Aug 24	Sep 24	Oct 24	Nov 24	FY2025 YTD
<b>Fuel Consumption (Gallons)</b>													
DG1 - GE 1.8	28,291	21,048	23,737	24,815	32,746	39,560	41,427	51,449	28,609	17,584	17,228	40,612	57,840
DG2 - GE 1.8	34,481	40,228	32,874	37,003	28,262	32,405	29,827	27,553	52,256	51,613	49,929	35,579	85,508
DG3 - CAT 1.6	0	0	0	0	0	0	0	0	0	0	0	0	0
DG4 - CAT 1.3	16,123	17,733	15,276	23,978	18,745	14,641	17,633	377	1,590	1,409	15,776	12,348	28,124
DG5 - CAT 1.3	17,364	18,059	16,618	12,874	15,926	15,650	14,525	24,991	15,303	28,120	16,972	13,157	30,130
CAT #3 - Retired May 2017	0	0	0	0	0	0	0	0	0	0	0	0	0
<b>Total Fuel Consumption (Gals)</b>	<b>96,259</b>	<b>97,068</b>	<b>88,505</b>	<b>98,670</b>	<b>95,679</b>	<b>102,256</b>	<b>103,413</b>	<b>104,371</b>	<b>97,759</b>	<b>98,726</b>	<b>99,905</b>	<b>101,697</b>	<b>201,602</b>
<b>Average Fuel Price (\$/Gallon)</b>	<b>3.94</b>	<b>3.75</b>	<b>3.73</b>	<b>3.82</b>	<b>3.81</b>	<b>4.81</b>	<b>3.69</b>	<b>3.64</b>	<b>3.67</b>	<b>3.57</b>	<b>3.36</b>	<b>3.37</b>	<b>3.36</b>
<b>Lube Oil Consumption (Gallons)</b>													
DG1 - GE 1.8	88	73	65	58	58	72	62	152	67	59	86	81	167
DG2 - GE 1.8	80	65	45	54	46	52	36	48	80	117	87	99	186
DG3 - CAT 1.6	0	0	0	0	0	0	0	0	0	0	0	0	0
DG4 - CAT 1.3	0	0	0	0	0	0	0	0	0	0	0	10	10
DG5 - CAT 1.3	0	0	0	0	0	0	0	0	0	0	0	0	0
CAT #3 - Retired May 2017	0	0	0	0	0	0	0	0	0	0	0	0	0
<b>Total LO Consumption (Gals)</b>	<b>168</b>	<b>138</b>	<b>110</b>	<b>112</b>	<b>104</b>	<b>124</b>	<b>98</b>	<b>200</b>	<b>147</b>	<b>176</b>	<b>173</b>	<b>190</b>	<b>363</b>
<b>Oil Change Log (75 Gal/change)</b>													
DG1 - GE 1.8	265	0	0	0	0	295	0	0	0	0	265	0	265
DG2 - GE 1.8	0	0	0	265	0	295	0	295	0	265	0	0	0
DG3 - CAT 1.6	0	0	0	0	0	0	0	0	0	0	0	0	0
DG4 - CAT 1.3	95	95	0	95	0	95	95	0	0	0	95	0	95
DG5 - CAT 1.3	95	0	95	95	0	95	95	95	95	95	0	95	95
CAT #3 - Retired May 2017	0	0	0	0	0	0	0	0	0	0	0	0	0
<b>Total Oil Change Volume (Gals)</b>	<b>455</b>	<b>95</b>	<b>95</b>	<b>455</b>	<b>0</b>	<b>780</b>	<b>190</b>	<b>390</b>	<b>95</b>	<b>360</b>	<b>360</b>	<b>95</b>	<b>455</b>

**Power Table 4 Distribution Feeder Statistics - FY2025: December 2023 – November 2024**

FEEDER STATISTICS	Dec 23	Jan 24	Feb 24	Mar 24	Apr 24	May 24	Jun 24	Jul 24	Aug 24	Sep 24	Oct 24	Nov 24	FY2025
Feeder 1 Load	379,394	379,056	331,571	387,827	358,891	404,582	388,954	405,747	394,470	374,995	401,666	379,521	781,187
Feeder 2 Load	133,166	132,931	127,245	136,083	140,001	141,509	122,332	128,954	125,716	158,597	141,600	134,114	275,714
Feeder 3 Load	437,906	454,639	416,390	448,223	439,562	449,566	441,053	468,425	458,442	464,628	460,263	449,891	910,154
Feeder 4 Load	372,364	375,663	344,701	376,769	373,328	387,596	383,096	403,573	395,652	378,242	395,835	394,873	790,708
Feeder 5 Load	167,061	156,972	146,671	181,165	178,291	206,112	213,789	219,901	214,340	206,092	213,380	216,394	429,774
<b>Total Feeder Load (kWh)</b>	<b>1,489,891</b>	<b>1,499,261</b>	<b>1,366,578</b>	<b>1,530,067</b>	<b>1,490,073</b>	<b>1,589,365</b>	<b>1,549,224</b>	<b>1,626,600</b>	<b>1,588,620</b>	<b>1,582,554</b>	<b>1,612,744</b>	<b>1,574,793</b>	<b>3,187,537</b>
Feeder 1 Sales	345,668	339,761	292,393	345,214	273,282	327,677	321,550	372,987	356,217	330,129	353,388	341,242	694,630
Feeder 2 Sales	132,367	112,348	120,331	112,452	126,417	128,126	113,019	120,474	123,743	117,744	133,891	127,284	261,175
Feeder 3 Sales	395,459	405,767	372,837	426,608	385,467	408,604	391,398	434,939	423,989	402,750	423,950	435,110	859,060
Feeder 4 Sales	321,141	308,018	297,037	336,988	317,043	329,788	327,312	341,983	332,486	319,368	322,748	352,495	675,243
Feeder 5 Sales	134,264	113,099	104,855	157,391	132,839	154,334	168,570	174,091	167,446	157,108	168,447	170,549	338,996
<b>Total Feeder Sales (kWh)</b>	<b>1,328,898</b>	<b>1,278,994</b>	<b>1,187,454</b>	<b>1,378,653</b>	<b>1,235,049</b>	<b>1,348,528</b>	<b>1,321,849</b>	<b>1,444,473</b>	<b>1,403,882</b>	<b>1,327,099</b>	<b>1,402,423</b>	<b>1,426,680</b>	<b>2,829,103</b>
Feeder 1 Loss - kWh	33,726	39,295	39,178	42,613	85,609	76,905	67,404	32,760	38,253	44,866	48,278	38,279	86,557
Feeder 2 Loss - kWh	799	20,583	6,914	23,631	13,584	13,383	9,313	8,480	1,973	40,853	7,709	6,830	14,539
Feeder 3 Loss - kWh	42,447	48,872	43,553	21,615	54,095	40,962	49,655	33,486	34,453	61,878	36,313	14,781	51,094
Feeder 4 Loss - kWh	51,223	67,645	47,664	39,781	56,285	57,808	55,784	61,590	63,166	58,874	73,087	42,378	115,465
Feeder 5 Loss - kWh	32,797	43,873	41,816	23,774	45,452	51,778	45,219	45,810	46,894	48,984	44,933	45,845	90,778
<b>Total Feeder Loss - kWh</b>	<b>160,993</b>	<b>220,267</b>	<b>179,124</b>	<b>151,414</b>	<b>255,024</b>	<b>240,837</b>	<b>227,375</b>	<b>182,127</b>	<b>184,738</b>	<b>255,455</b>	<b>210,321</b>	<b>148,113</b>	<b>358,434</b>
Feeder 1 Loss - %	8.9%	10.4%	11.8%	11.0%	23.9%	19.0%	17.3%	8.1%	9.7%	12.0%	12.0%	10.1%	11.1%
Feeder 2 Loss - %	0.6%	15.5%	5.4%	17.4%	9.7%	9.5%	7.6%	6.6%	1.6%	25.8%	5.4%	5.1%	5.3%
Feeder 3 Loss - %	9.7%	10.7%	10.5%	4.8%	12.3%	9.1%	11.3%	7.1%	7.5%	13.3%	7.9%	3.3%	5.6%
Feeder 4 Loss - %	13.8%	18.0%	13.8%	10.6%	15.1%	14.9%	14.6%	15.3%	16.0%	15.6%	18.5%	10.7%	14.6%
Feeder 5 Loss - %	19.6%	27.9%	28.5%	13.1%	25.5%	25.1%	21.2%	20.8%	21.9%	23.8%	21.1%	21.2%	21.1%
<b>Total Feeder Loss - %</b>	<b>10.8%</b>	<b>14.7%</b>	<b>13.1%</b>	<b>9.9%</b>	<b>17.1%</b>	<b>15.2%</b>	<b>14.7%</b>	<b>11.2%</b>	<b>11.6%</b>	<b>16.1%</b>	<b>13.0%</b>	<b>9.4%</b>	<b>11.2%</b>

**Power Table 5 Customer Energy Use By Category and By Feeder – November 2024**

Feeder	kWh/Connection		
	Residential	Commercial	Government
	kWh/Con	No. meters	kWh/Con
F01	336	858	9,652
F02	240	1,279	3,227
F03	308	2,195	1,008
F04	292	3,343	875
F05	191	3,597	294
Ancillary	0	0	0
<b>Total - Weno</b>	<b>273</b>	<b>2,254</b>	<b>3,011</b>
F10 - Tonoas	124	1,098	0

**Power Table 6 Power Distribution Statistics – FY2025: December 2023 – November 2024**

	Dec 23	Jan 24	Feb 24	Mar 24	Apr 24	May 24	Jun 24	Jul 24	Aug 24	Sep 24	Oct 24	Nov 24	FY2025 YTD
<b>Number of Outages (Frequency)</b>													
Forced - Generation	0	0	0	0	0	0	2	0	0	0	1	1	2
Planned - Generation	0	0	0	0	0	0	0	0	0	0	0	0	0
<b>Total Number of Outages (Gen)</b>	<b>0</b>	<b>0</b>	<b>0</b>	<b>0</b>	<b>0</b>	<b>0</b>	<b>2</b>	<b>0</b>	<b>0</b>	<b>0</b>	<b>1</b>	<b>1</b>	<b>2</b>
Forced - Distribution	3	0	0	0	1	0	15	3	0	3	6	5	0
Feeder 1	0	0	0	0	0	0	2	0	0	1	1	1	2
Feeder 2	2	0	0	0	1	0	7	1	0	1	2	1	3
Feeder 3	0	0	0	0	0	0	2	1	0	0	1	1	2
Feeder 4	0	0	0	0	0	0	2	0	0	1	1	1	2
Feeder 5	1	0	0	0	0	0	2	1	0	0	1	1	2
Planned - Distribution	0	1	0	0	0	0	0	0	0	0	0	0	0
Feeder 1	0	0	0	0	0	0	0	0	0	0	0	0	0
Feeder 2	0	1	0	0	0	0	0	0	0	0	0	0	0
Feeder 3	0	0	0	0	0	0	0	0	0	0	0	0	0
Feeder 4	0	0	0	0	0	0	0	0	0	0	0	0	0
Feeder 5	0	0	0	0	0	0	0	0	0	0	0	0	0
<b>Total Number of Outages (Dist)</b>	<b>3</b>	<b>1</b>	<b>0</b>	<b>0</b>	<b>1</b>	<b>0</b>	<b>15</b>	<b>3</b>	<b>0</b>	<b>3</b>	<b>6</b>	<b>5</b>	<b>11</b>

**Power Table 7 Power Outage Statistics – FY2025: December 2023 – November 2024**

	Dec 23	Jan 24	Feb 24	Mar 24	Apr 24	May 24	Jun 24	Jul 24	Aug 24	Sep 24	Oct 24	Nov 24	FY2025 YTD
<b>Duration of Outages (Hrs)</b>													
Forced - Generation	0.0	0.0	0.0	0.0	0.0	0.0	0.03	0.0	0.0	0.0	0.3	0.0	0.3
Planned - Generation	0.0	0.0	0.0	0.0	0.0	0.0	0.00	0.0	0.0	0.0	0.0	0.0	0.0
<b>Total Duration Gen Outage (Hrs)</b>	<b>0.0</b>	<b>0.0</b>	<b>0.0</b>	<b>0.0</b>	<b>0.0</b>	<b>0.0</b>	<b>0.03</b>	<b>0.0</b>	<b>0.0</b>	<b>0.0</b>	<b>0.3</b>	<b>0.0</b>	<b>0.3</b>
Forced - Distribution	4.2	0.0	0.0	0.0	1.1	0.0	7.6	2.5	0.0	5.2	1.4	0.5	1.9
Feeder 1	0.0	0.0	0.0	0.0	0.0	0.0	0.1	0.0	0.0	1.7	0.3	0.2	0.4
Feeder 2	2.1	0.0	0.0	0.0	1.1	0.0	6.9	0.7	0.0	1.3	0.3	0.2	0.5
Feeder 3	0.0	0.0	0.0	0.0	0.0	0.0	0.2	0.8	0.0	0.0	0.3	0.1	0.3
Feeder 4	0.0	0.0	0.0	0.0	0.0	0.0	0.2	0.0	0.0	2.2	0.3	0.1	0.3
Feeder 5	2.1	0.0	0.0	0.0	0.0	0.0	0.2	1.0	0.0	0.0	0.3	0.1	0.3
Planned - Distribution	0.0	3.0	0.0	0.0	0.0	0.0	0.0	0.0	0.0	0.0	0.0	0.0	0.0
Feeder 1	0.0	0.0	0.0	0.0	0.0	0.0	0.0	0.0	0.0	0.0	0.0	0.0	0.0
Feeder 2	0.0	3.0	0.0	0.0	0.0	0.0	0.0	0.0	0.0	0.0	0.0	0.0	0.0
Feeder 3	0.0	0.0	0.0	0.0	0.0	0.0	0.0	0.0	0.0	0.0	0.0	0.0	0.0
Feeder 4	0.0	0.0	0.0	0.0	0.0	0.0	0.0	0.0	0.0	0.0	0.0	0.0	0.0
Feeder 5	0.0	0.0	0.0	0.0	0.0	0.0	0.0	0.0	0.0	0.0	0.0	0.0	0.0
<b>Total Duration Dist Outage (Hrs)</b>	<b>4.2</b>	<b>3.0</b>	<b>0.0</b>	<b>0.0</b>	<b>1.1</b>	<b>0.0</b>	<b>7.6</b>	<b>2.5</b>	<b>0.0</b>	<b>5.2</b>	<b>1.4</b>	<b>0.5</b>	<b>1.9</b>

## Water Table 1 Water Production & Sales Data – FY2025: December 2023 – November 2024

<b>COMPANY WIDE DATA</b>	<b>Dec-23</b>	<b>Jan-24</b>	<b>Feb-24</b>	<b>Mar-24</b>	<b>Apr-24</b>	<b>May-24</b>	<b>Jun-24</b>	<b>Jul-24</b>	<b>Aug-24</b>	<b>Sep-24</b>	<b>Oct-24</b>	<b>Nov-24</b>	<b>FY2025 YTD</b>
<b>Water Production (Gallons)</b>													
WTP Output (from Pou reservoir)	533,396	400,779	738,986	429,161	530,425	711,953	573,197	902,030	1,161,520	690,238	979,306	615,658	1,594,964
Well Production (into supply)	18,278,379	19,250,500	15,121,700	16,944,300	14,702,800	17,135,600	17,917,300	16,621,400	18,724,200	16,976,800	16,535,400	16,583,200	33,118,600
<b>Volume into network</b>	<b>18,811,775</b>	<b>19,651,279</b>	<b>15,860,686</b>	<b>17,373,461</b>	<b>15,233,225</b>	<b>17,847,553</b>	<b>18,490,497</b>	<b>17,523,430</b>	<b>19,885,720</b>	<b>17,667,038</b>	<b>17,514,706</b>	<b>17,198,858</b>	<b>34,713,564</b>
<b>Water Volume Billed (Gallons)</b>	<b>Dec-23</b>	<b>Jan-24</b>	<b>Feb-24</b>	<b>Mar-24</b>	<b>Apr-24</b>	<b>May-24</b>	<b>Jun-24</b>	<b>Jul-24</b>	<b>Aug-24</b>	<b>Sep-24</b>	<b>Oct-24</b>	<b>Nov-24</b>	<b>FY2025 YTD</b>
Commercial	2,108,952	1,612,323	1,830,714	2,802,532	1,812,168	2,114,148	2,345,632	2,075,041	1,972,437	3,342,782	1,584,339	2,481,175	4,065,514
Government (excludes hospital)	1,322,960	1,034,180	1,055,110	948,850	801,460	684,840	1,023,750	939,520	1,160,540	453,020	1,400,420	1,592,530	2,992,950
Government Hospital	1,507,700	1,065,500	993,200	1,118,000	1,362,300	1,241,700	1,277,800	1,458,100	1,193,200	1,340,400	1,130,700	1,494,500	2,625,200
Residential	5,427,270	4,552,736	4,653,958	4,661,498	4,987,890	5,835,360	6,195,252	6,433,020	5,445,430	6,109,180	5,997,840	7,153,183	13,151,023
Water Delivery and Bunkering	275,000	313,000	307,000	390,000	234,000	176,000	109,000	121,500	161,500	126,500	130,700	133,000	263,700
<b>Total</b>	<b>10,641,882</b>	<b>8,577,739</b>	<b>8,839,982</b>	<b>9,920,880</b>	<b>9,197,818</b>	<b>10,052,048</b>	<b>10,951,434</b>	<b>11,027,181</b>	<b>9,933,107</b>	<b>11,371,882</b>	<b>10,243,999</b>	<b>12,854,388</b>	<b>23,098,387</b>
NRW	8,169,893	11,073,540	7,020,704	7,452,581	6,035,407	7,795,505	7,539,063	6,496,249	9,952,613	6,295,156	7,270,707	4,344,470	11,615,177
Volume	43.4%	56.4%	44.3%	42.9%	39.6%	43.7%	40.8%	37.1%	50.0%	35.6%	41.5%	25.3%	33.5%
<b>Production (Gallons)</b>	<b>Dec-23</b>	<b>Jan-24</b>	<b>Feb-24</b>	<b>Mar-24</b>	<b>Apr-24</b>	<b>May-24</b>	<b>Jun-24</b>	<b>Jul-24</b>	<b>Aug-24</b>	<b>Sep-24</b>	<b>Oct-24</b>	<b>Nov-24</b>	<b>FY2025 YTD</b>
WTP (production less storage difference)	533,396	400,779	738,986	429,161	530,425	711,953	573,197	902,030	1,161,520	690,238	979,306	615,658	1,594,964
Deep Wells	18,278,379	19,250,500	15,121,700	16,944,300	14,702,800	17,135,600	17,917,300	16,621,400	18,724,200	16,976,800	16,535,400	16,583,200	33,118,600
<b>Total Production</b>	<b>18,811,775</b>	<b>19,651,279</b>	<b>15,860,686</b>	<b>17,373,461</b>	<b>15,233,225</b>	<b>17,847,553</b>	<b>18,490,497</b>	<b>17,523,430</b>	<b>19,885,720</b>	<b>17,667,038</b>	<b>17,514,706</b>	<b>17,198,858</b>	<b>34,713,564</b>
<b>Volume Billed (Gallons)</b>	<b>Dec-23</b>	<b>Jan-24</b>	<b>Feb-24</b>	<b>Mar-24</b>	<b>Apr-24</b>	<b>May-24</b>	<b>Jun-24</b>	<b>Jul-24</b>	<b>Aug-24</b>	<b>Sep-24</b>	<b>Oct-24</b>	<b>Nov-24</b>	<b>FY2025 YTD</b>
Commercial	2,108,952	1,612,323	1,830,714	2,802,532	1,812,168	2,114,148	2,345,632	2,075,041	1,972,437	3,342,782	1,584,339	2,481,175	4,065,514
Government (excludes hospital)	1,322,960	1,034,180	1,055,110	948,850	801,460	684,840	1,023,750	939,520	1,160,540	453,020	1,400,420	1,592,530	2,992,950
Government Hospital	1,507,700	1,065,500	993,200	1,118,000	1,362,300	1,241,700	1,277,800	1,458,100	1,193,200	1,340,400	1,130,700	1,494,500	2,625,200
Residential	5,427,270	4,552,736	4,653,958	4,661,498	4,987,890	5,835,360	6,195,252	6,433,020	5,445,430	6,109,180	5,997,840	7,153,183	13,151,023
Water Delivery and Bunkering	275,000	313,000	307,000	390,000	234,000	176,000	109,000	121,500	161,500	126,500	130,700	133,000	263,700
<b>Total</b>	<b>10,641,882</b>	<b>8,577,739</b>	<b>8,839,982</b>	<b>9,920,880</b>	<b>9,197,818</b>	<b>10,052,048</b>	<b>10,951,434</b>	<b>11,027,181</b>	<b>9,933,107</b>	<b>11,371,882</b>	<b>10,243,999</b>	<b>12,854,388</b>	<b>23,098,387</b>
<b>NRW</b>	<b>Dec-23</b>	<b>Jan-24</b>	<b>Feb-24</b>	<b>Mar-24</b>	<b>Apr-24</b>	<b>May-24</b>	<b>Jun-24</b>	<b>Jul-24</b>	<b>Aug-24</b>	<b>Sep-24</b>	<b>Oct-24</b>	<b>Nov-24</b>	<b>FY2025 YTD</b>
Production	18,811,775	19,651,279	15,860,686	17,373,461	15,233,225	17,847,553	18,490,497	17,523,430	19,885,720	17,667,038	17,514,706	17,198,858	34,713,564
Billed Volume	10,641,882	8,577,739	8,839,982	9,920,880	9,197,818	10,052,048	10,951,434	11,027,181	9,933,107	11,371,882	10,243,999	12,854,388	23,098,387
NRW Volume	<b>8,169,893</b>	<b>11,073,540</b>	<b>7,020,704</b>	<b>7,452,581</b>	<b>6,035,407</b>	<b>7,795,505</b>	<b>7,539,063</b>	<b>6,496,249</b>	<b>9,952,613</b>	<b>6,295,156</b>	<b>7,270,707</b>	<b>4,344,470</b>	<b>11,615,177</b>
NRW Percentage	43.4%	56.4%	44.3%	42.9%	39.6%	43.7%	40.8%	37.1%	50.0%	35.6%	41.5%	25.3%	33.5%
<b>Invoiced Water Value (USD)</b>	<b>Dec-23</b>	<b>Jan-24</b>	<b>Feb-24</b>	<b>Mar-24</b>	<b>Apr-24</b>	<b>May-24</b>	<b>Jun-24</b>	<b>Jul-24</b>	<b>Aug-24</b>	<b>Sep-24</b>	<b>Oct-24</b>	<b>Nov-24</b>	<b>FY2025 YTD</b>
Water Delivery and Bunkering	6,597	6,167	5,737	7,611	5,571	3,427	1,876	3,862	4,230	4,001	2,945	2,934	5,879
Commercial	11,270	8,773	10,098	15,726	9,586	11,785	12,274	10,928	10,309	16,901	8,255	13,135	21,390
Government (includes hospital)	14,292	10,686	10,382	10,492	11,084	9,962	11,689	12,366	12,226	11,713	13,185	15,932	29,117
Residential	13,773	11,355	11,449	10,948	12,581	14,828	16,611	14,132	14,132	14,671	15,592	18,772	34,364
<b>Total</b>	<b>45,932</b>	<b>36,980</b>	<b>37,666</b>	<b>44,778</b>	<b>38,822</b>	<b>40,002</b>	<b>41,860</b>	<b>43,767</b>	<b>40,898</b>	<b>47,286</b>	<b>39,978</b>	<b>50,772</b>	<b>90,749</b>
<b>Sewer Charges (USD)</b>	<b>Dec-23</b>	<b>Jan-24</b>	<b>Feb-24</b>	<b>Mar-24</b>	<b>Apr-24</b>	<b>May-24</b>	<b>Jun-24</b>	<b>Jul-24</b>	<b>Aug-24</b>	<b>Sep-24</b>	<b>Oct-24</b>	<b>Nov-24</b>	<b>FY2025 YTD</b>
Commercial	4,073	3,164	3,342	6,221	3,440	4,616	4,454	4,122	3,855	6,892	3,029	5,127	8,156
Commercial - w/o water	2,809	2,809	2,973	2,973	2,973	2,973	2,973	2,973	2,973	2,973	2,973	2,973	5,945
Government	7,116	5,320	5,112	5,088	5,455	4,915	5,805	6,093	5,982	5,744	6,492	7,832	14,325
Residential	1,196	966	230	949	1,168	1,208	1,537	1,435	1,293	1,357	1,390	1,731	3,122
Residential w/o water	2,620	2,590	3,177	3,201	2,540	2,550	2,570	2,580	2,440	2,727	2,573	2,611	5,184
<b>Total</b>	<b>17,814</b>	<b>14,850</b>	<b>14,834</b>	<b>18,432</b>	<b>15,575</b>	<b>16,261</b>	<b>17,339</b>	<b>17,203</b>	<b>16,544</b>	<b>19,692</b>	<b>16,458</b>	<b>20,274</b>	<b>36,732</b>

## Water Table 2 Water/Sewer Connection Data – FY2025: December 2023 – November 2024

Connection Information	Dec-23	Jan-24	Feb-24	Mar-24	Apr-24	May-24	Jun-24	Jul-24	Aug-24	Sep-24	Oct-24	Nov-24	FY2025 YTD
<b>Water Connection Data (Total Active)</b>	<b>543</b>	<b>546</b>	<b>546</b>	<b>548</b>	<b>556</b>	<b>559</b>	<b>562</b>	<b>568</b>	<b>570</b>	<b>572</b>	<b>574</b>	<b>576</b>	<b>574</b>
Commercial - Billed	101	103	102	102	103	102	102	104	105	107	107	106	107
Commercial - Disconnected	0	0	0	0	0	0	0	0	0	0	0	0	0
Commercial - Meter Pulled	0	0	0	0	0	0	0	0	0	0	0	0	0
<b>Commercial Avge Consumption - Gall/conn/mth</b>	<b>20,881</b>	<b>15,654</b>	<b>17,948</b>	<b>27,476</b>	<b>17,594</b>	<b>20,727</b>	<b>22,996</b>	<b>19,952</b>	<b>18,785</b>	<b>31,241</b>	<b>14,807</b>	<b>23,407</b>	<b>19,107</b>
Government - Billed	29	29	30	30	30	30	30	31	31	31	31	31	31
Government - Disconnected	0	0	0	0	0	0	0	0	0	0	0	0	0
Government - Meter Pulled	0	0	0	0	0	0	0	0	0	0	0	0	0
<b>Government Avge Consumption - Gall/conn/mth</b>	<b>45,619</b>	<b>35,661</b>	<b>35,170</b>	<b>31,628</b>	<b>26,715</b>	<b>22,828</b>	<b>34,125</b>	<b>30,307</b>	<b>37,437</b>	<b>14,614</b>	<b>45,175</b>	<b>51,372</b>	<b>48,273</b>
Hospital - Billed	1	1	1	1	1	1	1	1	1	1	1	1	1
Hospital - Disconnected	0	0	0	0	0	0	0	0	0	0	0	0	0
Hospital - Meter Pulled	0	0	0	0	0	0	0	0	0	0	0	0	0
<b>Hospital Avge Consumption - Gall/conn/mth</b>	<b>1,507,700</b>	<b>1,065,500</b>	<b>993,200</b>	<b>1,118,000</b>	<b>1,362,300</b>	<b>1,241,700</b>	<b>1,277,800</b>	<b>1,458,100</b>	<b>1,193,200</b>	<b>1,340,400</b>	<b>1,130,700</b>	<b>1,494,500</b>	<b>1,312,600</b>
Residential - Billed	412	413	413	415	422	426	429	432	433	433	435	438	435
Residential - Disconnected	0	0	0	0	1	0	0	0	0	0	0	0	0
Residential - Meter Pulled	2	2	1	2	1	1	1	1	1	1	1	1	1
<b>Residential Avge Consumption - Gall/conn/mth</b>	<b>13,173</b>	<b>11,024</b>	<b>11,269</b>	<b>11,233</b>	<b>11,820</b>	<b>13,698</b>	<b>14,441</b>	<b>14,891</b>	<b>12,576</b>	<b>14,109</b>	<b>13,788</b>	<b>16,331</b>	<b>15,060</b>
<b>Sewer Connection Data (Total Registered)</b>	<b>609</b>	<b>629</b>	<b>610</b>	<b>609</b>	<b>618</b>	<b>620</b>	<b>618</b>	<b>627</b>	<b>609</b>	<b>604</b>	<b>620</b>	<b>614</b>	<b>620</b>
Commercial Billed	64	69	67	67	68	67	69	69	70	67	69	67	69
Commercial Billed w/o water	49	58	50	50	50	50	50	50	50	50	50	50	50
Government Billed	24	27	24	24	25	27	26	28	25	23	28	26	28
Residential Billed	237	241	239	240	247	246	241	247	244	230	239	234	239
Residential Billed w/o water	235	234	230	228	228	230	232	233	220	234	234	237	234
<b>STP Inflow (MG/month)</b>	<b>17.5</b>	<b>19.1</b>	<b>14.9</b>	<b>11.9</b>	<b>15.8</b>	<b>20.3</b>	<b>25.1</b>	<b>26.5</b>	<b>24.5</b>	<b>25.0</b>	<b>20.2</b>	<b>15.8</b>	<b>36</b>

**Water Table 3 Zonal Water Use Statistics – November 2024 & FY2025**

ZONAL NRW - November 2024					ZONAL NRW - FY2025				
Zone	Production	Sales	NRW		Zone	Production	Sales	NRW	
	Gallons	Gallons	Gallons	%		Gallons	Gallons	Gallons	%
1	200,000	166,090	33,910	17%	1	400,000	326,090	73,910	18%
2	12,416,158	8,917,748	3,498,410	28%	2	24,504,264	15,737,237	8,767,027	36%
3	5,000	0	5,000	100%	3	10,000	0	10,000	100%
4	694,700	246,860	447,840	64%	4	1,498,500	755,970	742,530	50%
5	77,400	0	77,400	0% *	5	147,200	0	147,200	-
6	2,666,800	2,431,140	235,660	9%	6	5,554,400	4,648,910	905,490	16%
7	200,000	243,030	-43,030	-22%	7	400,000	470,880	-70,880	-18%
8	938,800	716,520	222,280	24%	8	2,199,200	895,600	1,303,600	59%
Water Delivery/Bunker		133,000			Water Delivery/Bunker		263,700		
<b>Total</b>	<b>17,198,858</b>	<b>12,854,388</b>	<b>4,344,470</b>	<b>25.3%</b>	<b>Total</b>	<b>34,713,564</b>	<b>23,098,387</b>	<b>11,615,177</b>	<b>33.5%</b>
ZONAL WATER CONSUMPTION - November 2024					ZONAL WATER CONSUMPTION - FY2025				
Zone	Avge Use - Gallons/Connection/Month				Zone	Avge Use -Gallons/Connection			
	Commercial	Government	Hospital	Residential		Commercial	Government	Hospital	Residential
1	0	150,190	-	5,300	1	0	0	-	0
2	23,838	32,537	-	16,942	2	38,871	0	-	29,342
3	-	-	-	0	3	-	-	-	0
4	-	-	-	13,714	4	-	-	-	41,998
5	-	-	-	0	5	-	-	-	-
6	18,390	-	1,494,500	576	6	34,585	-	2,625,200	34,469
7	-	-	-	17,359	7	-	2	-	33,549
8	-	112,964	-	10,836	8	-	126,706	-	18,719
<b>Total</b>	<b>14,807</b>	<b>45,175</b>	<b>1,130,700</b>	<b>13,788</b>	<b>Total</b>	<b>38,354</b>	<b>96,547</b>	<b>2,625,200</b>	<b>30,025</b>
<p><b>Note *</b> - production in zone 5 is used solely for water tankering so NRW is shown as zero;  The zone 5 production is included in total production and Water Delivery &amp; Bunkering sales</p>									

## Work Order Summary – End November 2024

Work Order Type	WO at Start of Period	New	Printed	Dispatched	Completed	WO at End of Period
INTERNAL MAINTENANCE	5	34	34	0	19	20
INTERNAL POWER	0	0	0	0	0	0
INTERNAL SEWER	1	0	0	1	0	1
INTERNAL WATER	0	0	0	0	0	0
POWER	5	14	15	0	9	10
REVENUE	2	21	22	0	17	6
SEWER	3	26	28	0	19	10
SURVEY	0	13	13	0	12	1
WATER	19	83	89	0	75	27
<b>TOTAL ALL WORK ORDERS</b>	<b>35</b>	<b>191</b>	<b>201</b>		<b>151</b>	<b>75</b>

Work Order Type	WO Outstanding at Start	New WO	Completed as % of Outstanding and New	WO Outstanding At End
INTERNAL MAINTENANCE	14.3%	17.8%	-	26.7%
INTERNAL POWER	0.0%	0.0%	-	0.0%
INTERNAL SEWER	2.9%	0.0%	-	1.3%
INTERNAL WATER	0.0%	0.0%	-	0.0%
POWER	14.3%	7.3%	78.9%	13.3%
REVENUE	5.7%	11.0%	95.7%	8.0%
SEWER	8.6%	13.6%	96.6%	13.3%
SURVEY	0.0%	6.8%	100.0%	1.3%
WATER	54.3%	43.5%	87.3%	36.0%
<b>TOTAL ALL WORK ORDERS</b>			<b>88.9%</b>	



## **Administration Table 1 H&S Statistics – November 2024**

## **Administration Table 2 Attendance Summary – November 2024 & FY 2025**

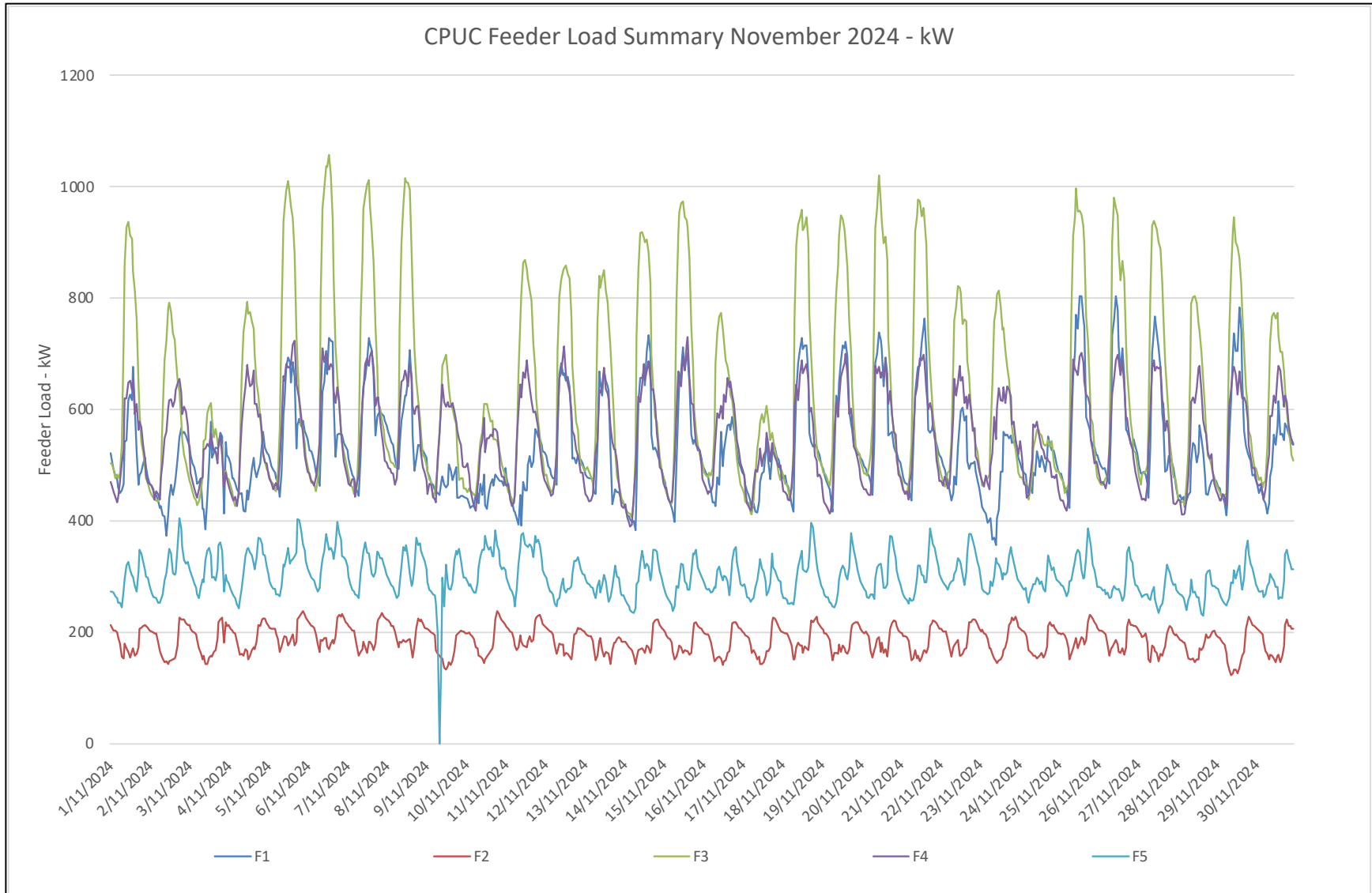
Data for Administration tables 1 and 2 not available for November 2024 – HR system upgrade/transition underway.



## CAPEX Table 1 Capex Summary Sheet – November 2024

Chuuk Public Utility Corporation Capex Summary Sheet as of November 30, 2024								
	A	B	C	D (B-C)	E (A-B)	F	(A+A1-F)	G (F-C)
	Total Value	Commitment	Expended	Commitment Balance	Uncommitted	Cash Drawdown	OIA / ADB Balance	Cash Balance
FY 2016 Tonoas Water System - D16AF00017-00010	750,000	380,883	380,883	0	369,117	415,000	335,000	34,117
FY 2020 ADB CWSSP - G6026 PRF	5,000,000	4,715,336	4,715,336	0	284,664	4,517,891	482,109	-197,445
FY 2022 ADB CWSSP - G0767	12,760,000	3,927,360	3,927,360	0	8,832,640	3,557,777	9,202,223	-369,583
FY 2023 Professional management D23AF00040-00	206,100	206,100	206,100	0	0	206,100	0	0
SPC - DFAT G23-418 GRA	31,200	31,200	13,838	17,362	0	9,360	21,840	-4,478
<b>Total</b>	<b>18,747,300</b>	<b>9,260,879</b>	<b>9,243,517</b>	<b>17,362</b>	<b>9,486,421</b>	<b>8,706,128</b>	<b>10,041,172</b>	<b>-537,389</b>

### Graph Showing Feeder Loads in kW – November 2024



## Graph Showing Generation Output in kW – November 2024

